

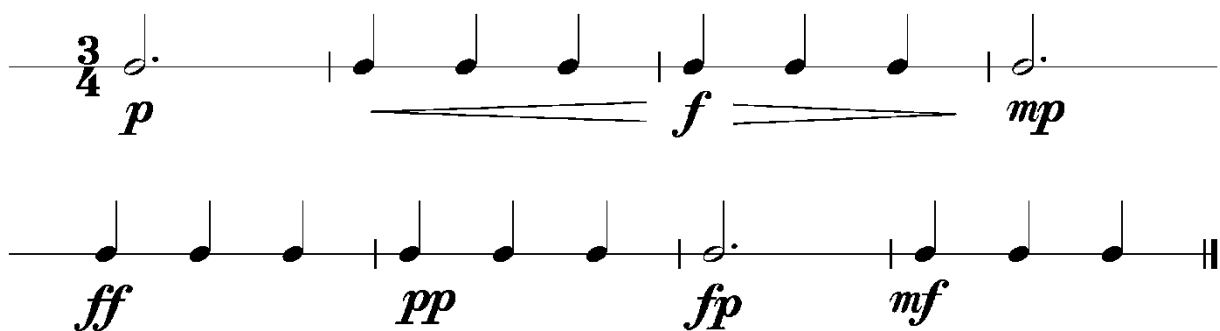
Anforderungen:

- 2 selbstgewählte Spielstücke: 1 schnelles, 1 langsames oder 1 auswendiges (ca. 1 Min) oder zu 2./3. im Ensemble und 1 Stück aus der Literaturliste in Absprache mit der Lehrperson (max. 12Pkt)
- 5 Tonleitertrainings ab Vorlage (max. 10Pkt)
- 2 Lieder/Stücke ab Blatt spielen im $4/4$ $3/4$ $2/4$ und mit \circ ♩ ♪ ♫ (max. 2Pkt)
- Rhythmus klatschen mit \circ ♩ ♪ ♫ (max. 2Pkt)
- Dynamikspiel *ff f mf mp p pp sfz fp cresc. decresc.* (max. 2Pkt)

Dauer des gesamten Vorspiels ca. 15 Minuten

Nimm dieses Blatt zum Diplomvorspiel mit!

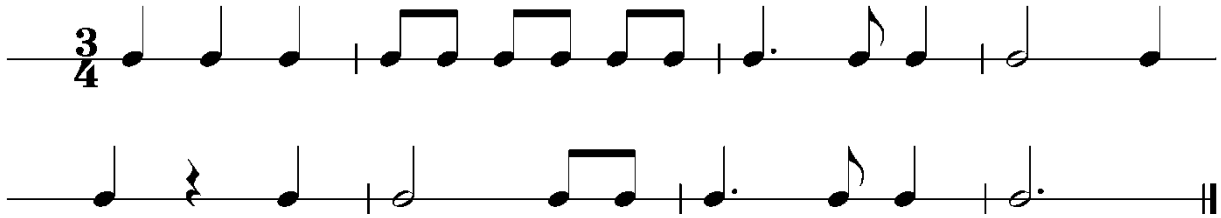
Dies ist ein Beispiel eines Dynamikchecks. Am Vorspieltag erhältst du einen ähnlichen (diesen kannst du spielen, klatschen oder sprechen).



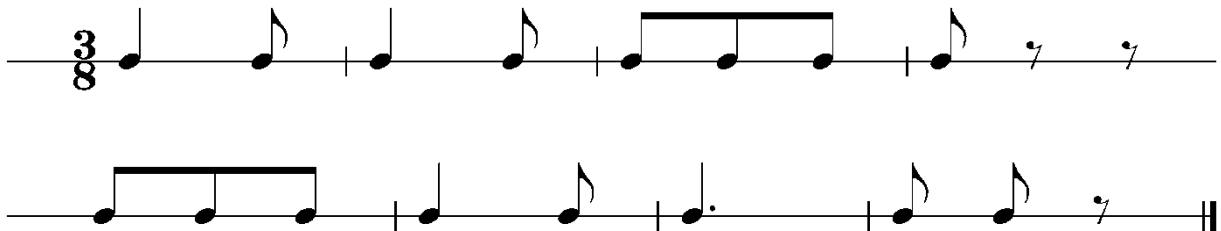
The image shows two staves of musical notation for a dynamic check exercise in 3/4 time. The first staff starts with a 3/4 time signature and a half note, followed by a quarter note, then a quarter note, then a quarter note, then a quarter note, then a quarter note, and finally a half note. Dynamics are indicated below the notes: *p* under the first half note, *f* under the first quarter note, and *mp* under the final half note. The second staff consists of a quarter note, a quarter note, a quarter note, a quarter note, a quarter note, a quarter note, a quarter note, and a quarter note. Dynamics are indicated below the notes: *ff* under the first quarter note, *pp* under the second quarter note, *fp* under the third quarter note, and *mf* under the fourth quarter note. The piece ends with a double bar line.

Dies sind zwei Beispiele eines Rhythmuschecks. Am Vorspieltag erhältst du einen ähnlichen Check (spielen, klatschen oder sprechen).

Beispiel 1

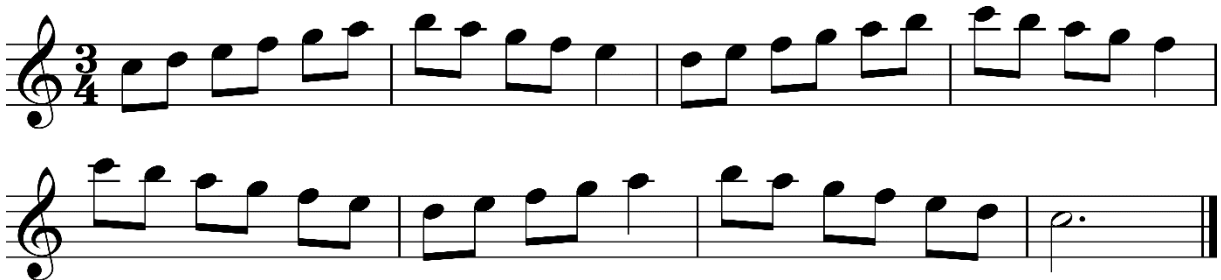


Beispiel 2



Das Tonleitertraining 1 bis 5 kannst du üben, da du diese am praktischen Vorspieltag vorspielen musst.

Tonleitertraining 1



Tonleitertraining 2

Two staves of musical notation for Tonleitertraining 2. The key signature is one sharp (F#) and the time signature is 3/4. The first staff contains the first four measures of the ascending scale: G4, A4, B4, C5, D5, E5, F#5, G5. The second staff contains the last four measures of the descending scale: F#5, E5, D5, C5, B4, A4, G4, followed by a whole note G4 and a double bar line.

Tonleitertraining 3

Two staves of musical notation for Tonleitertraining 3. The key signature is two sharps (F# and C#) and the time signature is 3/4. The first staff contains the first four measures of the ascending scale: A4, B4, C#5, D5, E5, F#5, G#5, A5. The second staff contains the last four measures of the descending scale: G#5, F#5, E5, D5, C#5, B4, A4, followed by a whole note A4 and a double bar line.

Tonleitertraining 4

Two staves of musical notation for Tonleitertraining 4. The key signature is one flat (Bb) and the time signature is 3/4. The first staff contains the first four measures of the ascending scale: F4, G4, A4, Bb4, C5, D5, E5, F5. The second staff contains the last four measures of the descending scale: E5, D5, C5, Bb4, A4, G4, F4, followed by a whole note F4 and a double bar line.

Tonleitertraining 5

Two staves of musical notation for Tonleitertraining 5. The key signature is two flats (Bb and Eb) and the time signature is 3/4. The first staff contains the first four measures of the ascending scale: E4, F4, G4, Ab4, Bb4, C5, D5, E5. The second staff contains the last four measures of the descending scale: D5, C5, Bb4, Ab4, G4, F4, E4, followed by a whole note E4 and a double bar line.