

## Anforderungen:

- 3 – 4 Vortragsstücke in möglichst verschiedenen Stilen und 1 Stück aus der Literaturliste in Absprache mit der Lehrperson, Total ca. 10 Minuten
- Chromatische Tonleiter, auswendig
- 7 Tonleitertrainings ab Vorlage
- 3 Molltonleitern, je äolisch/harmonisch/melodisch ab Vorlage
- Bluestonleitern, ab Vorlage
- Dynamikspiel
- Rhythmusspiel
- Ab Blattspiel mit  $\circ$   $\flat$   $\natural$   $\sharp$   $\flat$   $\sharp$  oder Improvisation mit Bluestonleiter
- Dauer des gesamten Vorspiels ca. 20 – 25 Minuten

Dauer des gesamten Checks ca. 20 - 25 Minuten

**Nimm dieses Blatt zum Diplomvorspiel mit!**

## Chromatische Tonleiter (auswendig)



The image shows three lines of musical notation in treble clef, representing chromatic scales. The first line shows a major scale starting on C4 (middle C) and ascending to G4. The second line shows a minor scale starting on C4 and ascending to G4. The third line shows a major scale starting on C4 and ascending to G4, with a double bar line at the end.

Bluestonleiter

Two staves of musical notation for the Blues scale in G major. The first staff shows the ascending scale: G4, A4, B4, C#5, D5, E5, F#5, G5. The second staff shows the descending scale: G5, F#5, E5, D5, C#5, B4, A4, G4. The notes are written in a treble clef with a 4/4 time signature.

Tonleitertraining 1

Four staves of musical notation for scale training in 4/4 time. Each staff starts with a number (3, 5, 7) indicating the starting note. The first staff starts on G4, the second on B4, and the third on D5. Each staff contains two lines of music: the first line shows the ascending scale and the second line shows the descending scale. The notes are written in a treble clef.

a-Molltonleiter – rein, harmonisch und melodisch

Three staves of musical notation for the A minor scale in 4/4 time. The first staff shows the natural A minor scale: A4, B4, C5, D5, E5, F5, G5, A5. The second staff shows the harmonic A minor scale: A4, B4, C5, D5, E5, F#5, G5, A5. The third staff shows the melodic A minor scale: A4, B4, C5, D5, E5, F#5, G#5, A5. The notes are written in a treble clef.

Tonleitertraining 2

3

5

7

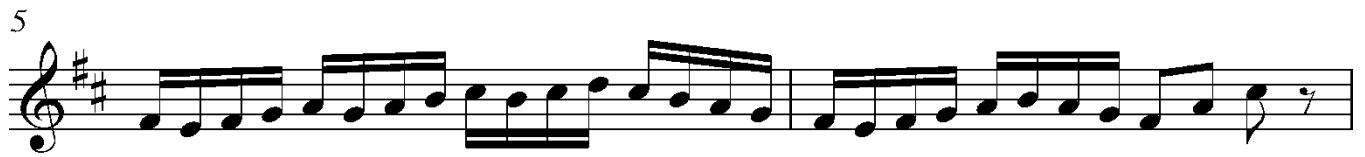
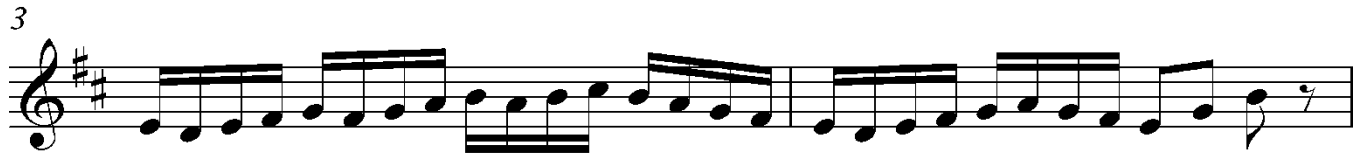
e-Molltonleiter – rein, harmonisch und melodisch

1

2

3

Tonleitertraining 3



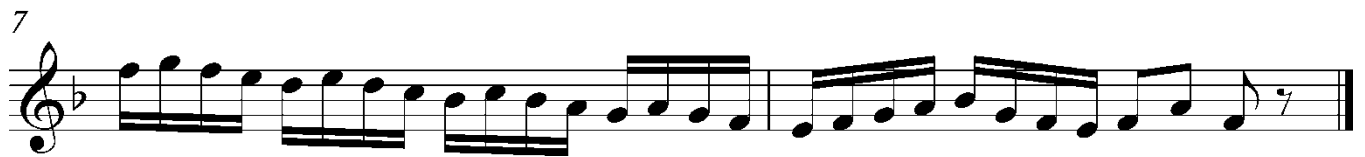
h-Molltonleiter – rein, harmonisch und melodisch



Tonleitertraining 4



Tonleitertraining 5



Tonleitertraining 6

1

3

5

7

Tonleitertraining 7 (Zerlegung und Schlagrhythmus)

C                      G<sup>7</sup>                      E                      Am

5    Em                      A<sup>7</sup>                      D<sup>7</sup>                      C

9    F                      Dm                      G                      E<sup>7</sup>

13 Hm                      A                      G                      C