

## Anforderungen:

- 3 – 4 Vortragsstücke in möglichst verschiedenen Stilen und 1 Stück aus der Literaturliste in Absprache mit der Lehrperson, Total ca. 10 Minuten
- Chromatische Tonleiter, auswendig
- 7 Tonleitertrainings ab Vorlage
- 3 Molltonleitern, je äolisch/harmonisch/melodisch ab Vorlage
- Bluestonleitern, ab Vorlage
- Dynamikspiel
- Rhythmuspiel
- Ab Blattspiel mit  $\circ$   $\cdot$   $\cdot$   $\cdot$   $\cdot$   $\cdot$   $\cdot$   $\cdot$  oder Improvisation mit Bluestonleiter
- Dauer des gesamten Vorspiels ca. 20 – 25 Minuten

Dauer des gesamten Checks ca. 20 - 25 Minuten

**Nimm dieses Blatt zum Diplomvorspiel mit!**

## Chromatische Tonleiter (auswendig)



The image displays three staves of musical notation for chromatic scales. The first staff shows a major scale (C major) in treble clef. The second staff shows a minor scale (C minor) in treble clef. The third staff shows a natural minor scale (C natural minor) in treble clef.

## Bluestonleiter

Two staves of musical notation for the Blues scale in G major. The first staff shows the ascending scale: G4, A4, B4, C#5, D5, E5, F#5, G5. The second staff shows the descending scale: G5, F#5, E5, D5, C#5, B4, A4, G4. The notes are written in a 4/4 time signature with a treble clef.

## Tonleitertraining 1

Four staves of musical notation for scale training in 4/4 time, starting on G4. The first staff shows the ascending scale. The second staff is marked with a '3' and shows a triplet of eighth notes. The third staff is marked with a '5' and shows a quintuplet of eighth notes. The fourth staff is marked with a '7' and shows a septuplet of eighth notes. Each staff ends with a quarter rest and a fermata.

## a-Molltonleiter – rein, harmonisch und melodisch

Three staves of musical notation for the A minor scale in 4/4 time. The first staff shows the ascending scale: A4, B4, C5, D5, E5, F5, G5, A5. The second staff shows the descending scale: A5, G5, F5, E5, D5, C5, B4, A4. The third staff shows the harmonic minor scale: A4, B4, C5, D5, E5, F#5, G5, A5. The notes are written in a 4/4 time signature with a treble clef.

Tonleitertraining 2

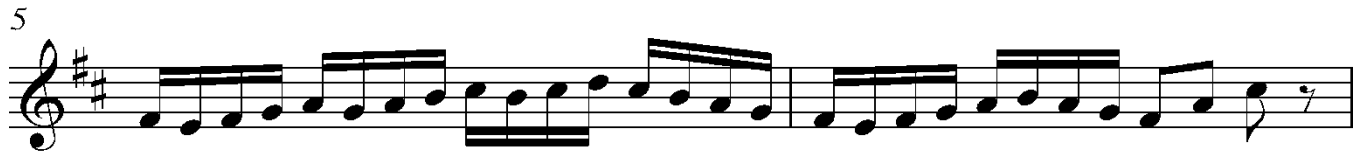
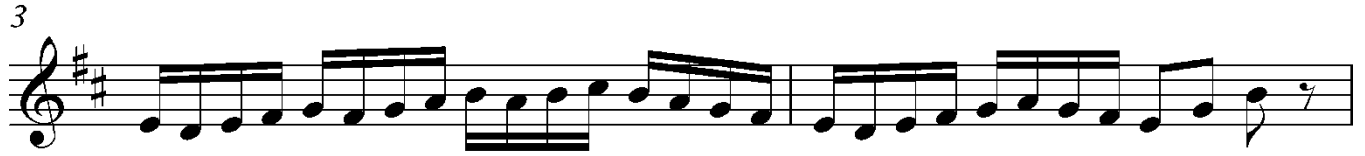
3

5

7

e-Molltonleiter – rein, harmonisch und melodisch

Tonleitertraining 3



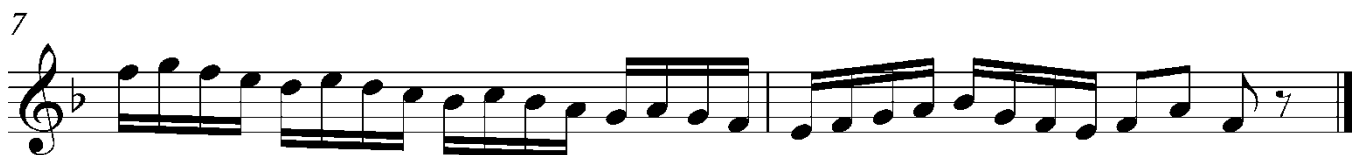
h-Molltonleiter – rein, harmonisch und melodisch



## Tonleitertraining 4



## Tonleitertraining 5



Tonleitertraining 6

3

5

7

Tonleitertraining 7 (Zerlegung und Schlagrhythmus)

C G<sup>7</sup> E Am

5 Em A<sup>7</sup> D<sup>7</sup> C

9 F Dm G E<sup>7</sup>

13 Hm A G C