

Anforderungen:

- 2 Vortragsstüci nach Wahl und 1 Stück aus der Literaturliste in Absprache mit der Lehrperson, Total ca. 8 Minuten (max. 18Pkt)
- Chromatische Tonleiter (max. 2Pkt)
- 7 Tonleitertrainings ab Vorlage (max. 6Pkt)
- 3 Molltonleitern (äolisch) ab Vorlage (max. 2Pkt)
- Bluestonleiter (max. 2Pkt)
- Dynamikcheck (max. 2Pkt)
- Rhythmuscheck (max. 2Pkt)
- Ab Blattspiel mit  $\circ \cdot \cdot \cdot \cdot \cdot \cdot \cdot \cdot$  oder Improvisation mit Bluestonleiter (max. 2Pkt)

Dauer des gesamten Vorspiels ca. 20 Minuten

**Nimm dieses Blatt zum Diplomvorspiel mit!**

Chromatische Tonleiter

Musical notation for a chromatic scale in 4/4 time, spanning three staves. The first staff shows the ascending scale from C4 to G4. The second staff shows the descending scale from G4 to C4. The third staff shows the ascending scale from C4 to G4 with a final rest.

Bluestonleiter

Musical notation for a blues scale in 4/4 time, spanning one staff. The scale starts on C4 and follows the pattern: C, B $\flat$ , A, G, F, E $\flat$ .

a-Molltonleiter

Musical notation for an A minor scale in 4/4 time, spanning one staff. The scale starts on A3 and follows the pattern: A, B, C, D, E, F, G.

Tonleitertraining 1

Musical notation for Tonleitertraining 1, C major scale in 4/4 time. The scale is written in treble clef with a key signature of one sharp (F#). The notation consists of four staves, each starting with a measure number (1, 5, 9, 13) and ending with a fermata. The first staff starts on C4, the second on G4, the third on D5, and the fourth on A5. The notes are: C4-D4-E4-F4-G4-A4-B4 (Staff 1); G4-A4-B4-C5-B4-A4-G4 (Staff 2); F4-G4-A4-B4-A4-G4-F4 (Staff 3); E4-F4-G4-A4-G4-F4-E4 (Staff 4).

Tonleitertraining 2

Musical notation for Tonleitertraining 2, D major scale in 4/4 time. The scale is written in treble clef with a key signature of two sharps (F# and C#). The notation consists of four staves, each starting with a measure number (1, 5, 9, 13) and ending with a fermata. The first staff starts on D4, the second on A4, the third on F#5, and the fourth on C#6. The notes are: D4-E4-F#4-G4-A4-B4 (Staff 1); A4-B4-C#5-B4-A4-G4 (Staff 2); F#4-G4-A4-B4-A4-G4-F#4 (Staff 3); E4-F#4-G4-A4-G4-F#4-E4 (Staff 4).

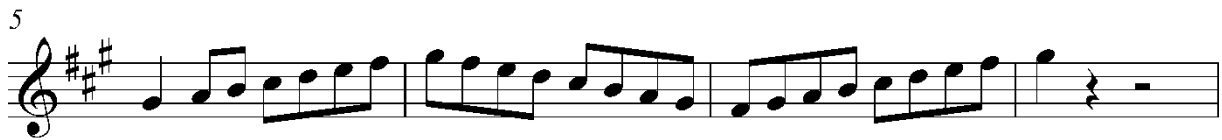
e-Molltonleiter

Musical notation for e-Molltonleiter, E minor scale in 4/4 time. The scale is written in treble clef with a key signature of one sharp (F#). The notation consists of a single staff starting with a measure number 1 and ending with a fermata. The notes are: E4-F4-G4-A4-B4-B4-A4-G4-F4 (Staff 1).

Tonleitertraining 3



Tonleitertraining 4



h-Molltonleiter



Tonleitertraining 5

C G<sup>7</sup> E Am

5 Em A<sup>7</sup> D<sup>7</sup> C

9 F Dm G E<sup>7</sup>

13 Hm A G C

Tonleitertraining 6


5

9

13

Tonleitertraining 7

C G<sup>7</sup> E Am



5 Em A<sup>7</sup> D<sup>7</sup> C

