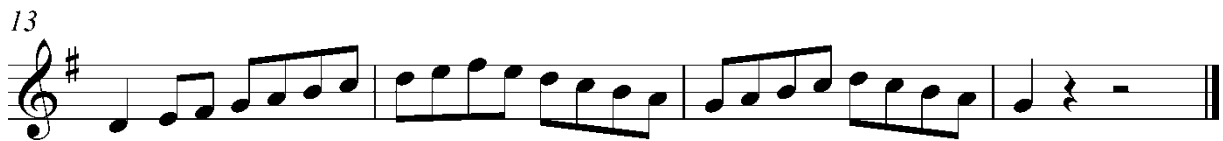




Bluestonleiter



Tonleitertraining 2



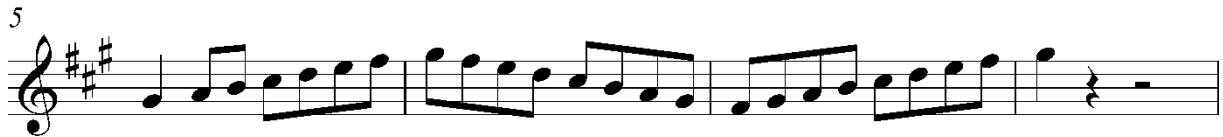
Tonleitertraining 3



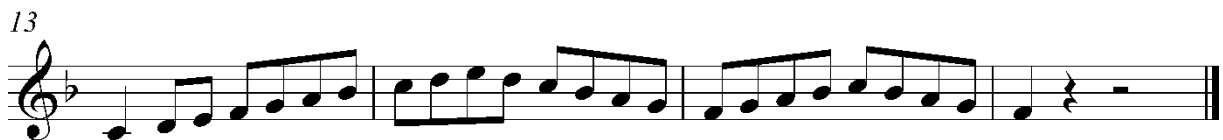
Molltonleiter 1



Tonleitertraining 4



Tonleitertraining 5



Molltonleiter 2



Tonleitertraining 6

Musical notation for Tonleitertraining 6, consisting of four staves of music in 4/4 time with a key signature of two flats. The first staff starts with a treble clef, a key signature of two flats, and a 4/4 time signature. The melody consists of eighth notes: G4, A4, Bb4, C5, D5, Eb5, F5, G5, F5, Eb5, D5, C5, Bb4, A4, G4. The second staff starts with a measure rest and continues the melody. The third staff continues the melody. The fourth staff ends with a double bar line.

Tonleitertraining 7

Musical notation for Tonleitertraining 7, consisting of four staves of music in 4/4 time with a key signature of three flats. The first staff starts with a treble clef, a key signature of three flats, and a 4/4 time signature. The melody consists of eighth notes: Gb4, Ab4, Bb4, C5, D5, Eb5, F5, G5, F5, Eb5, D5, C5, Bb4, Ab4, Gb4. The second staff starts with a measure rest and continues the melody. The third staff continues the melody. The fourth staff ends with a double bar line.

Molltonleiter 3

Musical notation for Molltonleiter 3, consisting of one staff of music in 4/4 time with a key signature of two flats. The melody consists of quarter notes: G4, Ab4, Bb4, C5, D5, Eb5, F5, G5, F5, Eb5, D5, C5, Bb4, Ab4, Gb4. The staff ends with a double bar line.

