


Anforderungen:

- 2 Vortragsstücke nach Wahl und 1 Stück aus der Literaturliste in Absprache mit der Lehrperson, Total ca. 8 Minuten (max. 18Pkt)
- Chromatische Tonleiter (max. 2Pkt)
- 7 Tonleitertrainings ab Vorlage (max. 6Pkt)
- 3 Molltonleitern (äolisch) ab Vorlage (max. 2Pkt)
- Bluestonleiter (max. 2Pkt)
- Dynamikcheck (max. 2Pkt)
- Rhythmuscheck (max. 2Pkt)
- Ab Blattspiel mit  oder Improvisation mit Bluestonleiter (max. 2Pkt)

Dauer des gesamten Vorspiels ca. 20 Minuten

Nimm dieses Blatt zum Diplomvorspiel mit!

Chromatische Tonleiter

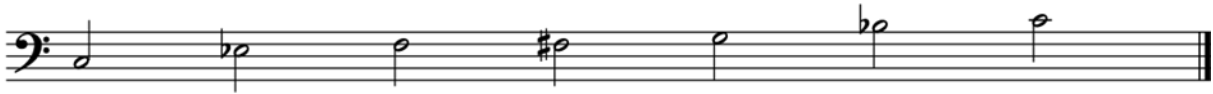


Tonleitertraining 1

C-Dur



Bluestonleiter



Tonleitertraining 2

G-Dur



Tonleitertraining 3

D-Dur



Molltonleiter 1

E-Moll



Tonleitertraining 4

A-Dur



Tonleitertraining 5

F-Dur

Two staves of musical notation in bass clef, common time, and one flat (F major). The first staff shows an ascending scale from F2 to F3. The second staff shows a descending scale from F3 to F2, followed by a triplet exercise consisting of three eighth notes in each of three groups, moving from F3 down to F2.

Molltonleiter 2

D-Moll

Two staves of musical notation in bass clef, common time, and two flats (D minor). The first staff shows an ascending scale from D2 to D3. The second staff shows a descending scale from D3 to D2, followed by a triplet exercise consisting of three eighth notes in each of three groups, moving from D3 down to D2.

Tonleitertraining 6

B-Dur

Two staves of musical notation in bass clef, common time, and two flats (B major). The first staff shows an ascending scale from B2 to B3. The second staff shows a descending scale from B3 to B2.

Tonleitertraining 7

Es-Dur

Two staves of musical notation in bass clef, common time, and three flats (E-flat major). The first staff shows an ascending scale from E-flat2 to E-flat3. The second staff shows a descending scale from E-flat3 to E-flat2, followed by a triplet exercise consisting of three eighth notes in each of three groups, moving from E-flat3 down to E-flat2.

Molltonleiter 3

A-Moll

