

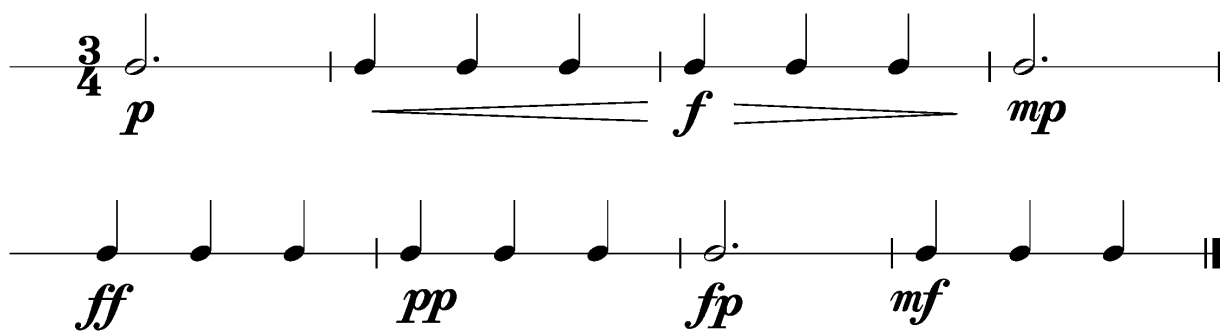
Anforderungen:

- 2 selbstgewählte Spielstücke: 1 schnelles, 1 langsames oder 1 auswendiges (ca. 1 Min) oder zu 2./3. im Ensemble und 1 Stück aus der Literaturliste in Absprache mit der Lehrperson (max. 12Pkt)
- 5 Tonleitertrainings ab Vorlage (max. 10Pkt)
- 2 Lieder/Stücke ab Blatt spielen im 4/4 3/4 2/4 und mit  $\circ$   $\dot{\circ}$   $\dot{\circ}$   $\dot{\circ}$   $\dot{\circ}$   $\dot{\circ}$  (max. 2Pkt)
- Rhythmus klatschen mit  $\circ$   $\dot{\circ}$   $\dot{\circ}$   $\dot{\circ}$   $\dot{\circ}$   $\dot{\circ}$  (max. 2Pkt)
- Dynamikspiel *ff f mf mp p pp sfz fp cresc. decresc.* (max. 2Pkt)

Dauer des gesamten Vorspiels ca. 15 Minuten

**Nimm dieses Blatt zum Diplomvorspiel mit!**

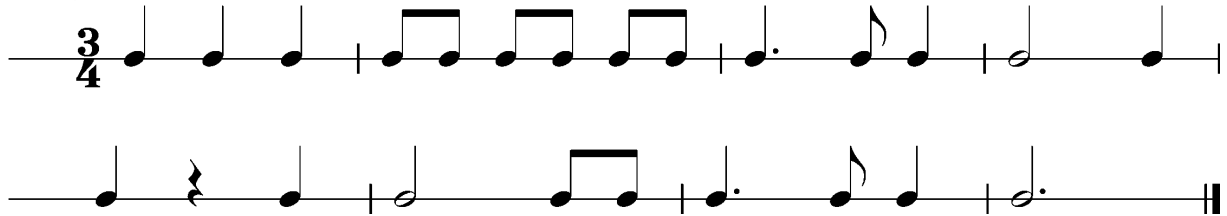
Dies ist ein Beispiel eines Dynamikchecks. Am Vorspieltag erhältst du einen ähnlichen (diesen kannst du spielen, klatschen oder sprechen).



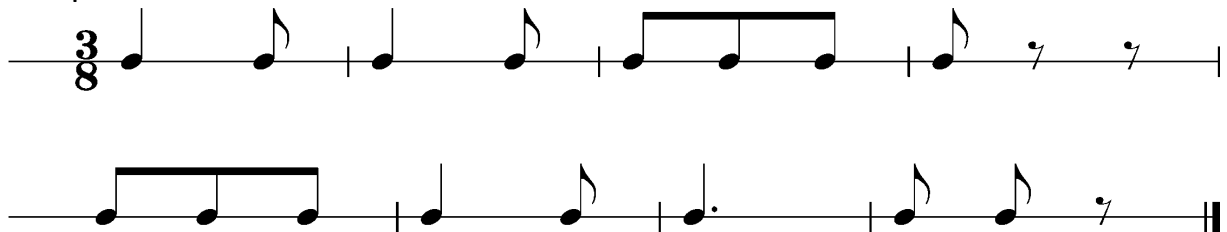
The image shows two staves of musical notation in 3/4 time. The first staff begins with a half note marked *p*, followed by three quarter notes. The first two quarter notes are marked *f* and the last one is marked *mp*. The second staff consists of four quarter notes with dynamics *ff*, *pp*, *fp*, and *mf* respectively. The piece ends with a double bar line.

Dies sind zwei Beispiele eines Rhythmuschecks. Am Vorspieltag erhaltst du einen ahnlichen Check (spielen, klatschen oder sprechen).

Beispiel 1

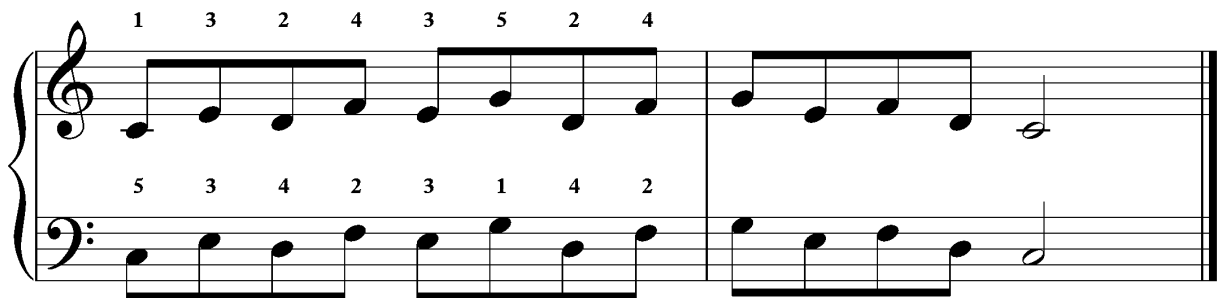
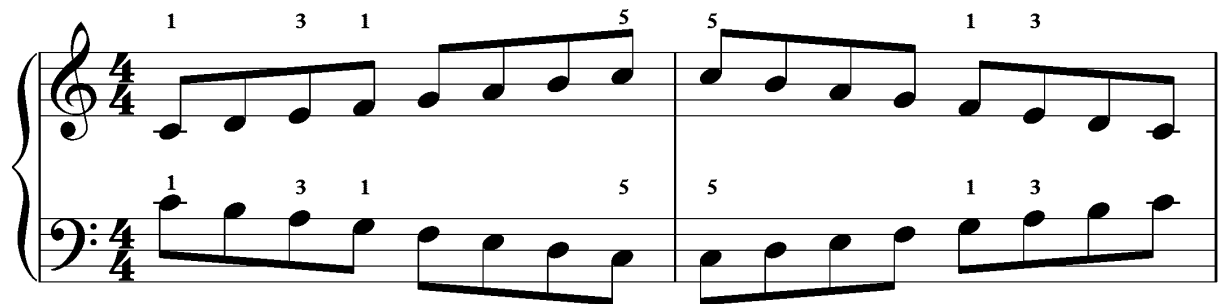


Beispiel 2



Das Tonleitertraining 1 bis 5 kannst du uben, da du diese am praktischen Vorspieltag vorspielen musst.

Tonleitertraining 1



Tonleitertraining 2

Musical score for Tonleitertraining 2, 4/4 time, G major. The score consists of two systems. The first system has two measures. The second system has two measures. Fingerings are indicated by numbers 1-5 above or below notes.

System 1:  
Measure 1: Treble clef: G4 (1), A4 (3), B4 (1), C5 (5). Bass clef: G3 (1), A3 (3), B3 (1), C4 (5).  
Measure 2: Treble clef: B4 (5), A4 (5), G4 (1), F#4 (3). Bass clef: B3 (5), A3 (5), G3 (1), F#3 (3).

System 2:  
Measure 1: Treble clef: E5 (1), D5 (3), C5 (2), B4 (4). Bass clef: G3 (5), F#3 (3), E3 (4), D3 (2).  
Measure 2: Treble clef: A4 (3), B4 (5), C5 (2), D5 (4). Bass clef: G3 (3), F#3 (1), E3 (4), D3 (2).

Tonleitertraining 3

Musical score for Tonleitertraining 3, 4/4 time, G major. The score consists of two systems. The first system has two measures. The second system has two measures. Fingerings are indicated by numbers 1-5 above or below notes.

System 1:  
Measure 1: Treble clef: G4 (1), A4 (3), B4 (1), C5 (5). Bass clef: G3 (1), A3 (3), B3 (1), C4 (5).  
Measure 2: Treble clef: D5 (5), C5 (5), B4 (1), A4 (3). Bass clef: D4 (5), C4 (5), B3 (1), A3 (3).

System 2:  
Measure 1: Treble clef: G4 (1), A4 (3), B4 (5), C5 (1). Bass clef: G3 (5), F#3 (3), E3 (4), D3 (2).  
Measure 2: Treble clef: D5 (1), C5 (3), B4 (5), A4 (1). Bass clef: G3 (3), F#3 (1), E3 (4), D3 (2).

Tonleitertraining 4

The first system of 'Tonleitertraining 4' consists of two staves in 4/4 time with a key signature of one flat (B-flat). The right-hand staff contains an ascending and descending scale: C4, D4, E4, F4, G4, A4, Bb4, A4, G4, F4, E4, D4, C4. Fingerings are indicated as 1, 1, 4, 4, 4. The left-hand staff contains a descending and ascending scale: C4, Bb3, Ab3, G3, F3, E3, D3, C3, Bb3, Ab3, G3, F3, E3, D3, C3. Fingerings are indicated as 1, 3, 1, 5, 5, 1, 3.

The second system of 'Tonleitertraining 4' continues the scales from the first system. The right-hand staff contains an ascending and descending scale: C4, D4, E4, F4, G4, A4, Bb4, A4, G4, F4, E4, D4, C4. Fingerings are indicated as 1, 3, 2, 4, 3, 5, 2, 4. The left-hand staff contains a descending and ascending scale: C4, Bb3, Ab3, G3, F3, E3, D3, C3, Bb3, Ab3, G3, F3, E3, D3, C3. Fingerings are indicated as 5, 3, 4, 2, 3, 1, 4, 2.

Tonleitertraining 5

The first system of 'Tonleitertraining 5' consists of two staves in 4/4 time with a key signature of two sharps (F# and C#). The right-hand staff contains an ascending and descending scale: C5, D5, E5, F#5, G5, A5, B5, A5, G5, F#5, E5, D5, C5. Fingerings are indicated as 1, 3, 1, 5, 5, 3, 1. The left-hand staff contains a descending and ascending scale: C5, B5, A5, G5, F#5, E5, D5, C5, B5, A5, G5, F#5, E5, D5, C5. The left-hand staff is mostly empty, with a few notes in the first measure.

The second system of 'Tonleitertraining 5' continues the scales from the first system. The right-hand staff contains an ascending and descending scale: C5, D5, E5, F#5, G5, A5, B5, A5, G5, F#5, E5, D5, C5. The left-hand staff contains a descending and ascending scale: C5, B5, A5, G5, F#5, E5, D5, C5, B5, A5, G5, F#5, E5, D5, C5. Fingerings are indicated as 1, 1, 5, 5, 1, 3.