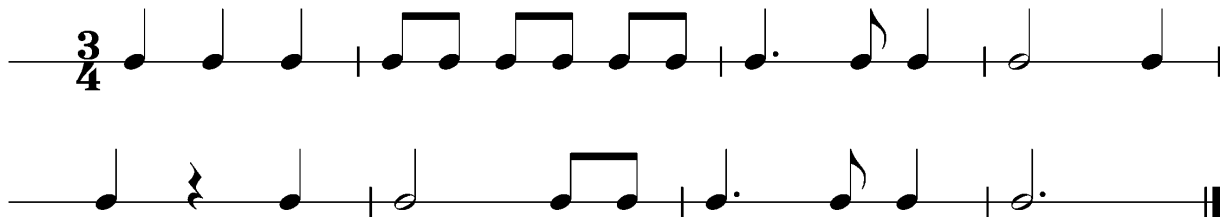
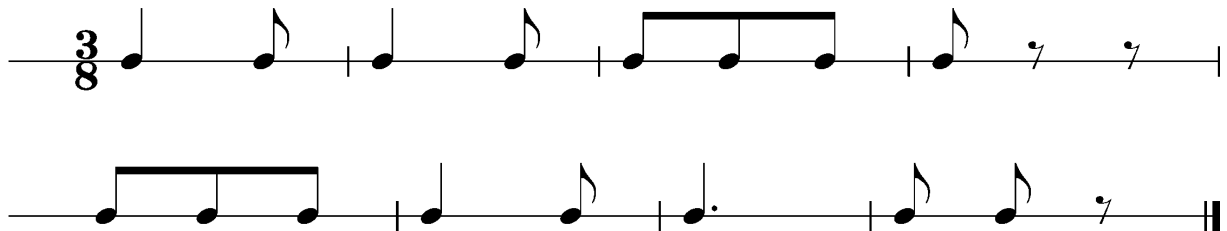


Dies sind zwei Beispiele eines Rhythmuschecks. Am Vorspieltag erhältst du einen ähnlichen Check (spielen, klatschen oder sprechen).

Beispiel 1



Beispiel 2



Das Tonleitertraining 1 bis 5 kannst du üben, da du diese am praktischen Vorspieltag vorspielen musst.

Tonleitertraining 1



Tonleitertraining 2

Two staves of musical notation for Tonleitertraining 2. The first staff is in bass clef, 3/4 time, and B-flat major. It contains four measures of eighth-note patterns: G2-F2-E2, D2-C2-B1, A1-G1-F1, and E1-D1-C1. The second staff is in bass clef, 3/4 time, and B-flat minor. It contains four measures of eighth-note patterns: G2-F2-E2, D2-C2-B1, A1-G1-F1, and E1-D1-C1, ending with a double bar line.

Tonleitertraining 3

Two staves of musical notation for Tonleitertraining 3. The first staff is in bass clef, 3/4 time, and B-flat major. It contains four measures of eighth-note patterns: G2-F2-E2, D2-C2-B1, A1-G1-F1, and E1-D1-C1. The second staff is in bass clef, 3/4 time, and B-flat minor. It contains four measures of eighth-note patterns: G2-F2-E2, D2-C2-B1, A1-G1-F1, and E1-D1-C1, ending with a double bar line.

Tonleitertraining 4

Two staves of musical notation for Tonleitertraining 4. The first staff is in bass clef, 3/4 time, and B-flat major. It contains four measures of eighth-note patterns: G2-F2-E2, D2-C2-B1, A1-G1-F1, and E1-D1-C1. The second staff is in bass clef, 3/4 time, and B-flat minor. It contains four measures of eighth-note patterns: G2-F2-E2, D2-C2-B1, A1-G1-F1, and E1-D1-C1, ending with a double bar line.

Tonleitertraining 5

Two staves of musical notation for Tonleitertraining 5. The first staff is in bass clef, 3/4 time, and B-flat major. It contains four measures of eighth-note patterns: G2-F2-E2, D2-C2-B1, A1-G1-F1, and E1-D1-C1. The second staff is in bass clef, 3/4 time, and B-flat minor. It contains four measures of eighth-note patterns: G2-F2-E2, D2-C2-B1, A1-G1-F1, and E1-D1-C1, ending with a double bar line.