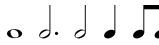



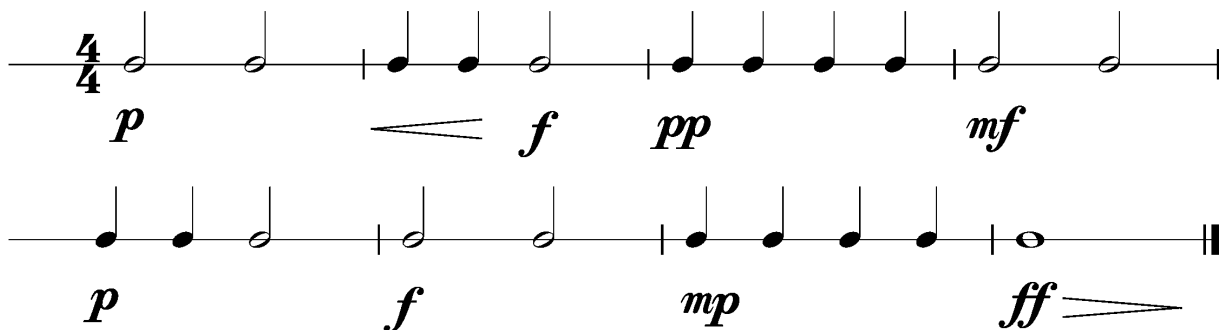
## Anforderungen:

- 2 selbstgewählte Spielstücke: 1 schnelles, 1 langsames Spielstück solistisch oder im Ensemble mit anderen Prüflingen / KollegInnen und 1 Stück aus der Literaturliste in Absprache mit der Lehrperson (max. 12Pkt)
- 3 Tonleitertrainings ab Vorlage (max. 6Pkt)
- Rhythmus klatschen mit  inkl. Pausen (max. 2Pkt)
- 1 Lied ab Blatt spielen mit  (max. 2Pkt)
- Dynamikspiel *ff f mf mp p pp cresc. decresc.* (max. 2Pkt)

Dauer des gesamten Vorspiels ca. 10 Minuten

**Nimm dieses Blatt zum Diplomvorspiel mit!**

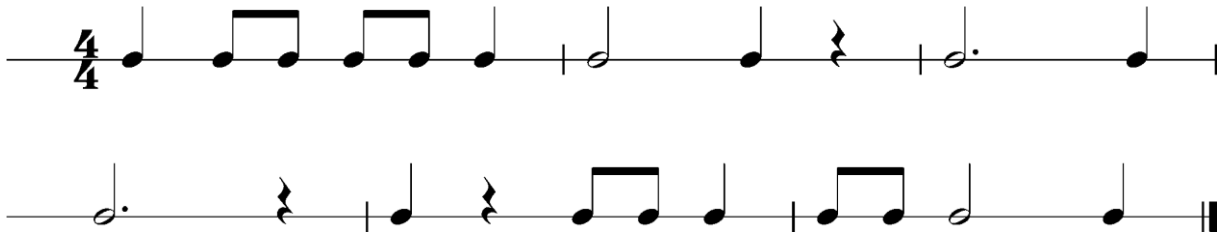
Dies ist ein Beispiel eines Dynamikchecks. Am Vorspieltag erhältst du einen ähnlichen Check (spielen, klatschen oder sprechen).



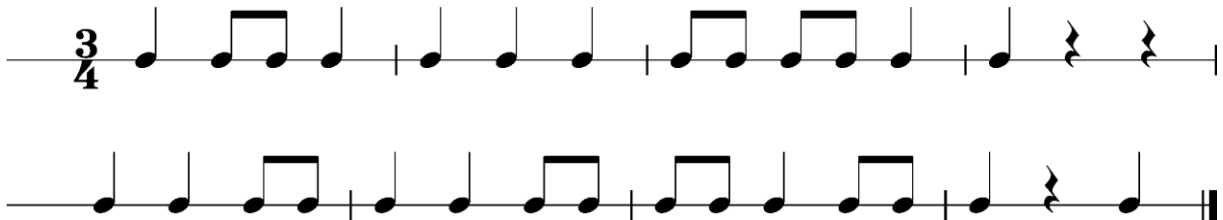
The image shows two musical staves in 4/4 time, illustrating dynamic changes. The first staff contains four measures: the first measure has a half note with dynamic *p*; the second measure has two quarter notes with dynamic *f* and a wedge-shaped hairpin indicating a crescendo; the third measure has four eighth notes with dynamic *pp*; the fourth measure has a half note with dynamic *mf*. The second staff contains four measures: the first measure has a half note with dynamic *p*; the second measure has a half note with dynamic *f*; the third measure has four eighth notes with dynamic *mp*; the fourth measure has a half note with dynamic *ff* and a wedge-shaped hairpin indicating a crescendo.

Dies sind zwei Beispiele eines Rhythmuschecks. Am Vorspieltag erhältst du einen ähnlichen Check (spielen, klatschen oder sprechen).

## Beispiel 1



## Beispiel 2



Die Tonleitertrainings 1 bis 3 kannst du üben, da du diese am Vorspieltag vorspielen musst.

## Tonleitertraining 1

Musical notation for Tonleitertraining 1, consisting of four staves of a C major scale in 4/4 time. The first staff shows the ascending scale: C4, D4, E4, F4, G4, A4, B4, C5. The second staff shows the descending scale: C5, B4, A4, G4, F4, E4, D4, C4. The third staff shows the ascending scale: C4, D4, E4, F4, G4, A4, B4, C5. The fourth staff shows the descending scale: C5, B4, A4, G4, F4, E4, D4, C4.

## Das Tonleitertraining 2

Musical notation for Das Tonleitertraining 2, consisting of four staves of a D major scale in 4/4 time. The first staff shows the ascending scale: D4, E4, F#4, G4, A4, B4, C#5, D5. The second staff shows the descending scale: D5, C#5, B4, A4, G4, F#4, E4, D4. The third staff shows the ascending scale: D4, E4, F#4, G4, A4, B4, C#5, D5. The fourth staff shows the descending scale: D5, C#5, B4, A4, G4, F#4, E4, D4.

Das Tonleitertraining 3

The image shows four staves of musical notation for xylophone. Each staff begins with a treble clef and a key signature of one flat (Bb). The first staff is in C major (one flat). The second staff is in D minor (two flats). The third staff is in E-flat major (three flats). The fourth staff is in F major (two flats). Each staff contains two measures of music, with the first measure being an ascending eighth-note scale and the second measure being a descending eighth-note scale. The notes are quarter notes. The fourth staff ends with a double bar line.