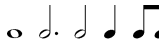



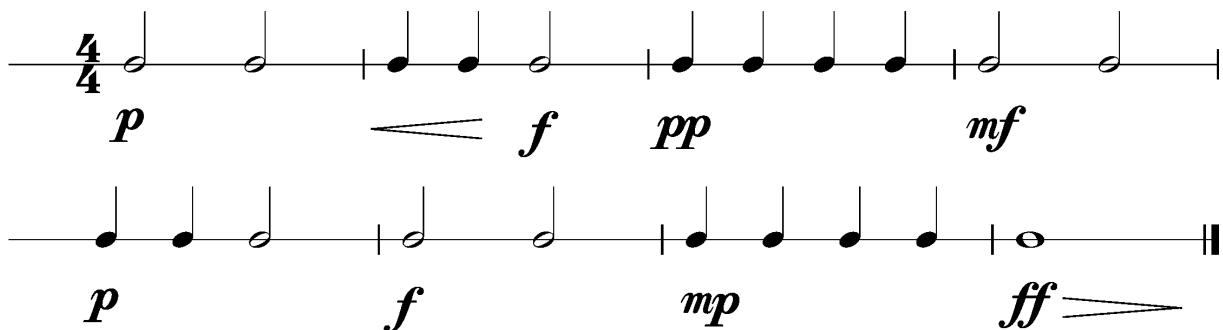
## Anforderungen:

- 2 selbstgewählte Spielstücke: 1 schnelles, 1 langsames Spielstück solistisch oder im Ensemble mit anderen Prüflingen / KollegInnen und 1 Stück aus der Literaturliste in Absprache mit der Lehrperson (max. 12Pkt)
- 3 Tonleitertrainings ab Vorlage (max. 6Pkt)
- Rhythmus klatschen mit  inkl. Pausen (max. 2Pkt)
- 1 Lied ab Blatt spielen mit  (max. 2Pkt)
- Dynamikspiel *ff f mf mp p pp cresc. decresc.* (max. 2Pkt)

Dauer des gesamten Vorspiels ca. 10 Minuten

**Nimm dieses Blatt zum Diplomvorspiel mit!**

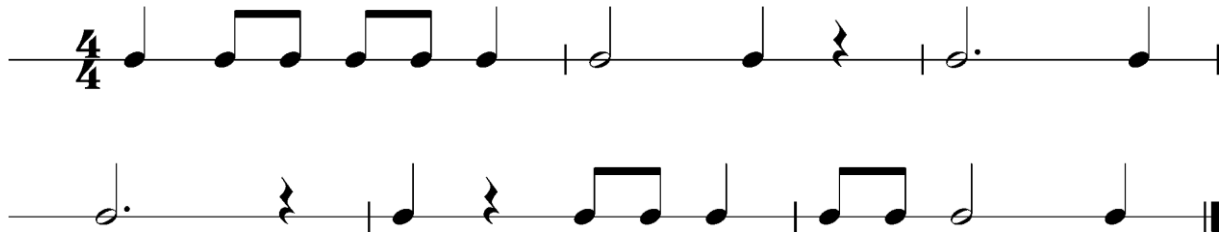
Dies ist ein Beispiel eines Dynamikchecks. Am Vorspieltag erhältst du einen ähnlichen Check (spielen, klatschen oder sprechen).



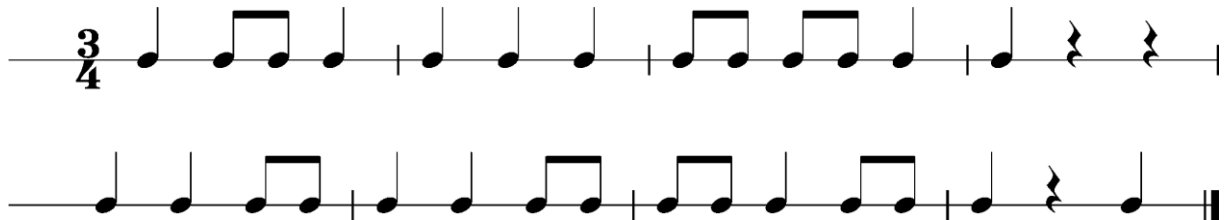
The image shows two staves of musical notation in 4/4 time, illustrating dynamic changes. The first staff starts with a piano (*p*) dynamic, followed by a crescendo to forte (*f*), then a decrescendo to pianissimo (*pp*), and finally a crescendo to mezzo-forte (*mf*). The second staff starts with piano (*p*), followed by forte (*f*), mezzo-piano (*mp*), and finally fortissimo (*ff*).

Dies sind zwei Beispiele eines Rhythmuschecks. Am Vorspieltag erhältst du einen ähnlichen Check (spielen, klatschen oder sprechen).

Beispiel 1



Beispiel 2



Die Tonleitertrainings 1 bis 3 kannst du üben, da du diese am Vorspieltag vorspielen musst.

**Tonleitertraining 1**

Four staves of musical notation for Tonleitertraining 1 in C major, 4/4 time, bass clef. The first staff shows the ascending and descending scales. The second staff shows the ascending and descending scales with slurs. The third staff shows the ascending and descending scales with slurs. The fourth staff shows the ascending and descending scales with slurs and a double bar line at the end.

**Das Tonleitertraining 2**

Four staves of musical notation for Das Tonleitertraining 2 in D major, 4/4 time, bass clef. The first staff shows the ascending and descending scales. The second staff shows the ascending and descending scales with slurs. The third staff shows the ascending and descending scales with slurs. The fourth staff shows the ascending and descending scales with slurs and a double bar line at the end.

Das Tonleitertraining 3

The image displays four staves of musical notation for a cello. Each staff begins with a bass clef, a key signature of one flat (B-flat), and a 4/4 time signature. The notation consists of a sequence of eighth notes, with some groups of notes beamed together. The first staff contains 12 notes, the second 12 notes, the third 12 notes, and the fourth 12 notes. The notes in each staff are: G2, A2, Bb2, C3, D3, E3, F3, G3, A3, Bb3, C4, D4. The fourth staff concludes with a double bar line.