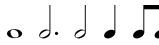



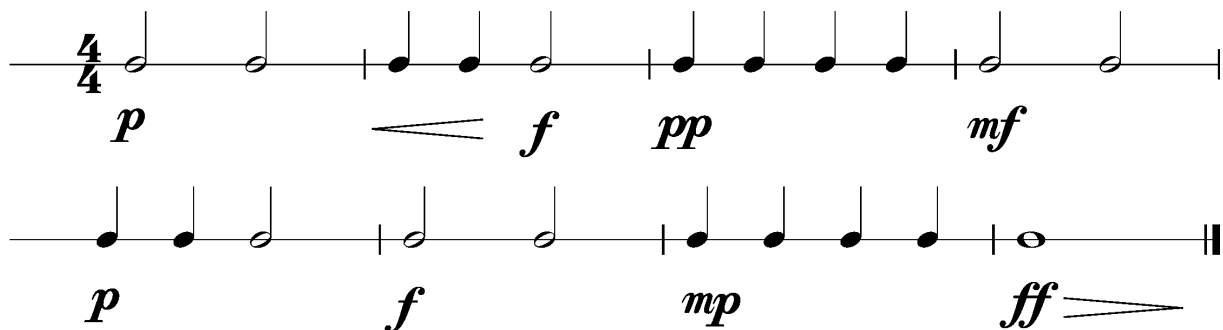
Anforderungen:

- 2 selbstgewählte Spielstücke: 1 schnelles, 1 langsames Spielstück solistisch oder im Ensemble mit anderen Prüflingen / KollegInnen und 1 Stück aus der Literaturliste in Absprache mit der Lehrperson (max. 12Pkt)
- 3 Tonleitertrainings ab Vorlage (max. 6Pkt)
- Rhythmus klatschen mit  inkl. Pausen (max. 2Pkt)
- 1 Lied ab Blatt spielen mit  (max. 2Pkt)
- Dynamikspiel *ff f mf mp p pp cresc. decresc.* (max. 2Pkt)

Dauer des gesamten Vorspiels ca. 10 Minuten

Nimm dieses Blatt zum Diplomvorspiel mit!

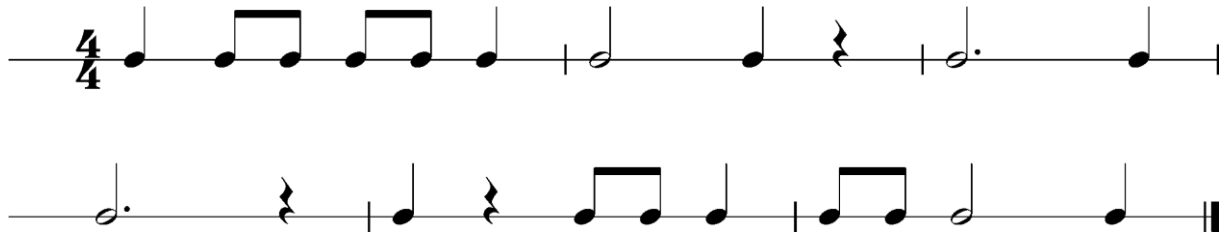
Dies ist ein Beispiel eines Dynamikchecks. Am Vorspieltag erhältst du einen ähnlichen Check (spielen, klatschen oder sprechen).



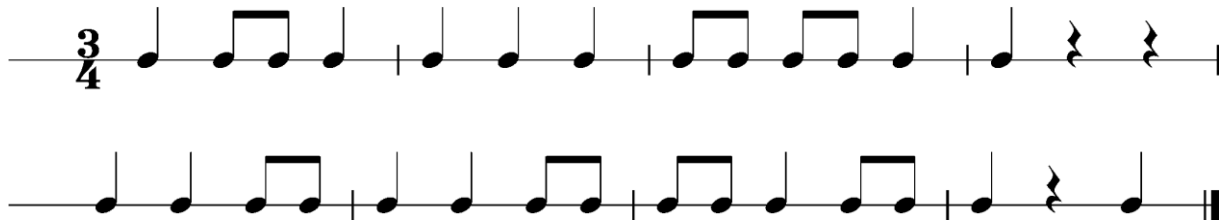
The image shows two musical staves in 4/4 time. The first staff contains a sequence of notes: a half note (p), a quarter note (f), a quarter note (pp), and a half note (mf). The second staff contains a sequence of notes: a quarter note (p), a quarter note (f), a quarter note (mp), and a half note (ff). The dynamics are indicated by the letters p, f, pp, mf, mp, and ff, with wedge-shaped symbols indicating the direction of the dynamic change.

Dies sind zwei Beispiele eines Rhythmuschecks. Am Vorspieltag erhaltst du einen ahnlichen Check (spielen, klatschen oder sprechen).

Beispiel 1



Beispiel 2



Die Tonleitertrainings 1 bis 3 kannst du üben, da du diese am Vorspieltag vorspielen musst.

Tonleitertraining 1

Musical notation for Tonleitertraining 1, consisting of four staves of a C major scale in 4/4 time. The first staff shows the ascending scale: C4, D4, E4, F4, G4, A4, B4, C5. The second staff shows the descending scale: C5, B4, A4, G4, F4, E4, D4, C4. The third staff shows the ascending scale: C4, D4, E4, F4, G4, A4, B4, C5. The fourth staff shows the descending scale: C5, B4, A4, G4, F4, E4, D4, C4.

Das Tonleitertraining 2

Musical notation for Das Tonleitertraining 2, consisting of four staves of a D major scale in 4/4 time. The first staff shows the ascending scale: D4, E4, F#4, G4, A4, B4, C#5, D5. The second staff shows the descending scale: D5, C#5, B4, A4, G4, F#4, E4, D4. The third staff shows the ascending scale: D4, E4, F#4, G4, A4, B4, C#5, D5. The fourth staff shows the descending scale: D5, C#5, B4, A4, G4, F#4, E4, D4.

Das Tonleitertraining 3

The image shows four staves of musical notation for Ukulele. Each staff begins with a treble clef and a key signature of one flat (B-flat). The first staff is in 4/4 time, while the subsequent three staves are in 3/4 time. The notation consists of eighth and quarter notes, forming a scale exercise. The first staff has a 4/4 time signature, and the others have a 3/4 time signature. The notes are arranged in a sequence that suggests a scale, with some slurs indicating phrasing. The fourth staff ends with a double bar line.