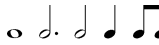



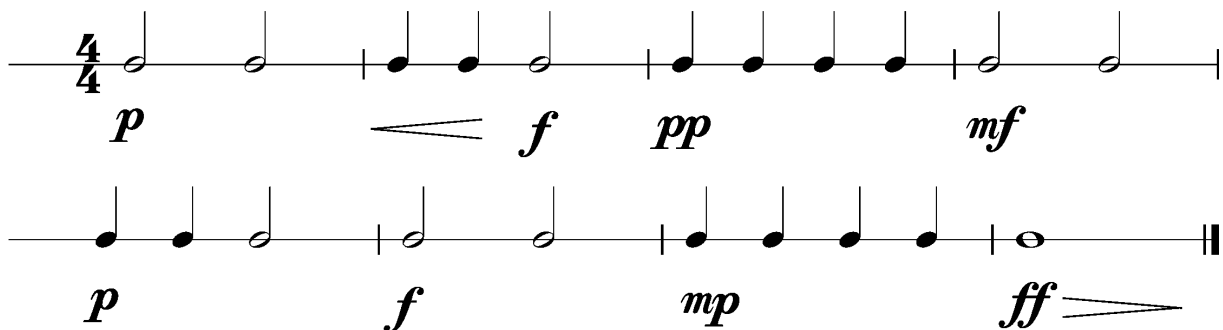
Anforderungen:

- 2 selbstgewählte Spielstücke: 1 schnelles, 1 langsames Spielstück solistisch oder im Ensemble mit anderen Prüflingen / KollegInnen und 1 Stück aus der Literaturliste in Absprache mit der Lehrperson (max. 12Pkt)
- 3 Tonleitertrainings ab Vorlage (max. 6Pkt)
- Rhythmus klatschen mit  inkl. Pausen (max. 2Pkt)
- 1 Lied ab Blatt spielen mit  (max. 2Pkt)
- Dynamikspiel *ff f mf mp p pp cresc. decresc.* (max. 2Pkt)

Dauer des gesamten Vorspiels ca. 10 Minuten

Nimm dieses Blatt zum Diplomvorspiel mit!

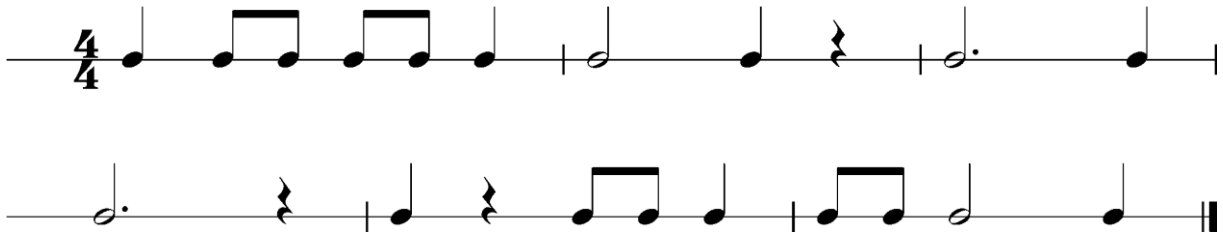
Dies ist ein Beispiel eines Dynamikchecks. Am Vorspieltag erhältst du einen ähnlichen Check (spielen, klatschen oder sprechen).



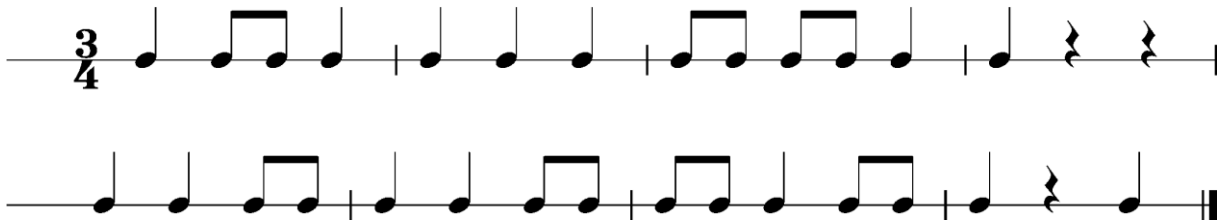
The image shows two musical staves in 4/4 time, illustrating dynamic markings. The first staff contains the following notes and dynamics: a quarter note (p), a quarter note, a quarter note (f), a quarter note (pp), a quarter note, a quarter note, a quarter note, a quarter note, and a quarter note (mf). The second staff contains: a quarter note (p), a quarter note, a quarter note, a quarter note (f), a quarter note, a quarter note, a quarter note (mp), a quarter note, a quarter note, and a quarter note (ff). Crescendo and decrescendo hairpins are used to indicate the dynamic changes.

Dies sind zwei Beispiele eines Rhythmuschecks. Am Vorspieltag erhältst du einen ähnlichen Check (spielen, klatschen oder sprechen).

Beispiel 1



Beispiel 2



Die Tonleitertrainings 1 bis 3 kannst du üben, da du diese am Vorspieltag vorspielen musst.

Tonleitertraining 1

Musical notation for Tonleitertraining 1, consisting of four staves of a C major scale in 4/4 time. The first staff shows the ascending scale: C4, D4, E4, F4, G4, A4, B4, C5. The second staff shows the descending scale: C5, B4, A4, G4, F4, E4, D4, C4. The third staff shows the ascending scale: C4, D4, E4, F4, G4, A4, B4, C5. The fourth staff shows the descending scale: C5, B4, A4, G4, F4, E4, D4, C4.

Das Tonleitertraining 2

Musical notation for Das Tonleitertraining 2, consisting of three staves of a D major scale in 4/4 time. The first staff shows the ascending scale: D4, E4, F#4, G4, A4, B4, C#5, D5. The second staff shows the descending scale: D5, C#5, B4, A4, G4, F#4, E4, D4. The third staff shows the ascending scale: D4, E4, F#4, G4, A4, B4, C#5, D5.

Das Tonleitertraining 3

The image shows a musical score for a scale exercise titled "Das Tonleitertraining 3". The score is written in G major (one sharp) and 4/4 time. It consists of four staves, each containing a line of music. The first staff starts with a treble clef, a key signature of one sharp (F#), and a 4/4 time signature. The melody consists of quarter notes: G4, A4, B4, C5, D5, E5, F#5, G5, F#5, E5, D5, C5, B4, A4, G4. The second staff continues the scale with quarter notes: G4, A4, B4, C5, D5, E5, F#5, G5, F#5, E5, D5, C5, B4, A4, G4. The third staff continues the scale with quarter notes: G4, A4, B4, C5, D5, E5, F#5, G5, F#5, E5, D5, C5, B4, A4, G4. The fourth staff continues the scale with quarter notes: G4, A4, B4, C5, D5, E5, F#5, G5, F#5, E5, D5, C5, B4, A4, G4, ending with a double bar line.