



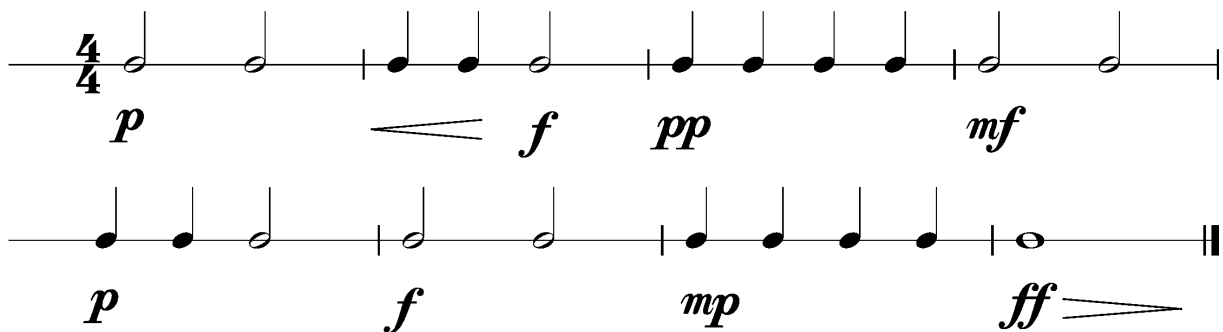
## Anforderungen:

- 2 selbstgewählte Spielstücke: 1 schnelles, 1 langsames Spielstück solistisch oder im Ensemble mit anderen Prüflingen / KollegInnen und 1 Stück aus der Literaturliste in Absprache mit der Lehrperson (max. 12Pkt)
- 3 Tonleitertrainings ab Vorlage (max. 6Pkt)
- Rhythmus klatschen mit  inkl. Pausen (max. 2Pkt)
- 1 Lied ab Blatt spielen mit  (max. 2Pkt)
- Dynamikspiel *ff f mf mp p pp cresc. decresc.* (max. 2Pkt)

Dauer des gesamten Vorspiels ca. 10 Minuten

**Nimm dieses Blatt zum Diplomvorspiel mit!**

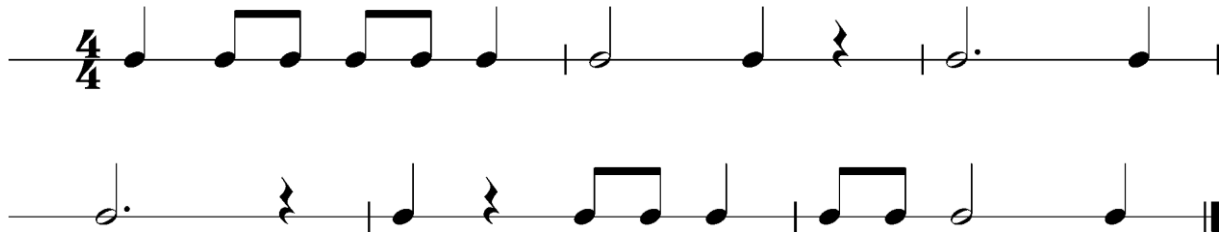
Dies ist ein Beispiel eines Dynamikchecks. Am Vorspieltag erhältst du einen ähnlichen Check (spielen, klatschen oder sprechen).



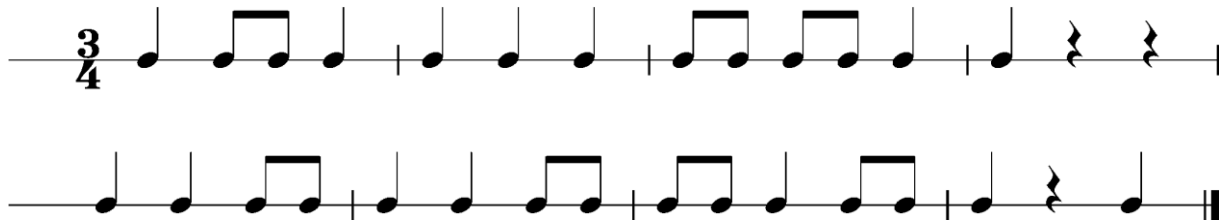
The image shows two staves of musical notation in 4/4 time, illustrating a dynamic check exercise. The first staff contains four measures: the first measure has a half note with dynamic *p*; the second measure has two quarter notes with dynamic *f* and a wedge-shaped decrescendo hairpin; the third measure has four eighth notes with dynamic *pp*; the fourth measure has a half note with dynamic *mf*. The second staff contains four measures: the first measure has a half note with dynamic *p*; the second measure has a half note with dynamic *f*; the third measure has four eighth notes with dynamic *mp*; the fourth measure has a half note with dynamic *ff* and a wedge-shaped crescendo hairpin.

Dies sind zwei Beispiele eines Rhythmuschecks. Am Vorspieltag erhaltst du einen ahnlichen Check (spielen, klatschen oder sprechen).

Beispiel 1



Beispiel 2



Die Tonleitertrainings 1 bis 3 kannst du üben, da du diese am Vorspieltag vorspielen musst.

Tonleitertraining 1

Musical notation for Tonleitertraining 1, consisting of four staves of bass clef music in 4/4 time. The first staff starts with a treble clef and a 4/4 time signature. The music consists of eighth notes in a descending scale, followed by a bar with a whole note, and then another descending eighth-note scale.

Das Tonleitertraining 2

Musical notation for Das Tonleitertraining 2, consisting of four staves of bass clef music in 4/4 time with one flat. The first staff starts with a treble clef and a 4/4 time signature. The music consists of eighth notes in a descending scale, followed by a bar with a whole note, and then another descending eighth-note scale.

Das Tonleitertraining 3

The image displays four staves of musical notation for a double bass, representing a scale exercise in G major, 4/4 time. Each staff contains two measures of music. The first measure of each staff is an ascending eighth-note scale starting on G2 (two ledger lines below the staff) and ending on G3 (the first line). The second measure is a descending eighth-note scale starting on G3 and ending on G2. The notes in the first measure are G2, A2, B2, C3, D3, E3, F#3, G3. The notes in the second measure are G3, F#3, E3, D3, C3, B2, A2, G2. The first staff has a 4/4 time signature, while the others have a key signature of one sharp (F#). The fourth staff ends with a double bar line.