



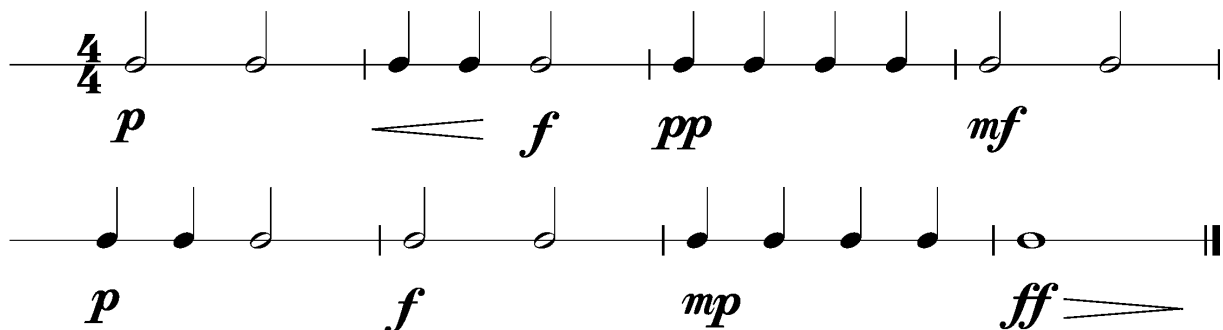
Anforderungen:

- 2 selbstgewählte Spielstücke: 1 schnelles, 1 langsames Spielstück solistisch oder im Ensemble mit anderen Prüflingen / KollegInnen und 1 Stück aus der Literaturliste in Absprache mit der Lehrperson (max. 12Pkt)
- 3 Tonleitertrainings ab Vorlage (max. 6Pkt)
- Rhythmus klatschen mit  inkl. Pausen (max. 2Pkt)
- 1 Lied ab Blatt spielen mit  (max. 2Pkt)
- Dynamikspiel *ff f mf mp p pp cresc. decresc.* (max. 2Pkt)

Dauer des gesamten Vorspiels ca. 10 Minuten

Nimm dieses Blatt zum Diplomvorspiel mit!

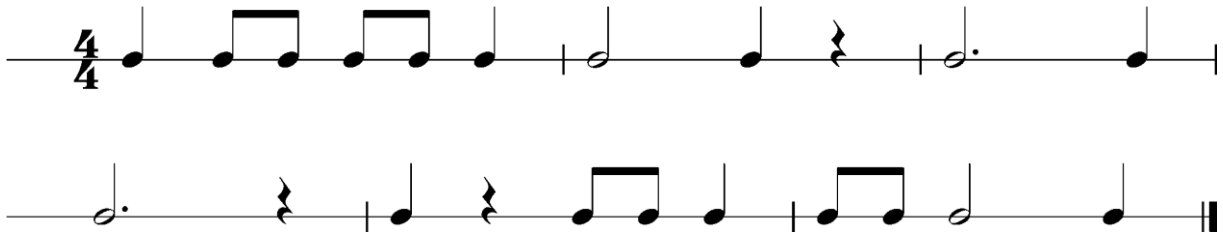
Dies ist ein Beispiel eines Dynamikchecks. Am Vorspieltag erhältst du einen ähnlichen Check (spielen, klatschen oder sprechen).



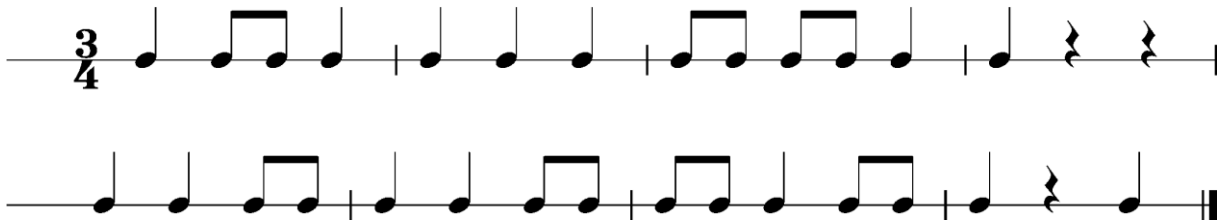
The image shows two musical staves in 4/4 time. The first staff contains a sequence of notes: a half note (p), a quarter note (f), a quarter note (pp), a quarter note (mf), and a half note. The second staff contains a sequence of notes: a quarter note (p), a quarter note (f), a quarter note (mp), a quarter note (ff), and a half note. Dynamic markings are placed below the notes, and hairpins indicate the change in volume.

Dies sind zwei Beispiele eines Rhythmuschecks. Am Vorspieltag erhaltst du einen ahnlichen Check (spielen, klatschen oder sprechen).

Beispiel 1



Beispiel 2



Die Tonleitertrainings 1 bis 3 kannst du üben, da du diese am Vorspieltag vorspielen musst.

Tonleitertraining 1



do re mi fi su la bo do do re mi fi su la bo do do

The musical notation for Tonleitertraining 1 is written on a single staff in 4/4 time. It consists of three measures. The first measure contains a half note 'do', a quarter note 're', a quarter note 'mi', a quarter note 'fi', a quarter note 'su', and a half note 'la'. The second measure contains a half note 'bo', a quarter note 'do', a quarter note 'do', a quarter note 're', a quarter note 'mi', a quarter note 'fi', a quarter note 'su', and a half note 'la'. The third measure contains a half note 'bo', a quarter note 'do', a quarter note 'do', a quarter note 're', a quarter note 'mi', a quarter note 'fi', a quarter note 'su', and a half note 'la'. The piece ends with a double bar line.

Das Tonleitertraining 2



do do re fi su la do re fi su la su fi re la su fi re do

The musical notation for Das Tonleitertraining 2 is written on a single staff in 4/4 time. It consists of three measures. The first measure contains a half note 'do', a quarter note 'do', a quarter note 're', a quarter note 'fi', a quarter note 'su', and a half note 'la'. The second measure contains a half note 'do', a quarter note 're', a quarter note 'fi', a quarter note 'su', a quarter note 'la', a quarter note 'su', a quarter note 'fi', a quarter note 're', and a half note 'la'. The third measure contains a half note 'do', a quarter note 're', a quarter note 'fi', a quarter note 'su', a quarter note 'la', a quarter note 'su', a quarter note 'fi', a quarter note 're', and a half note 'do'. The piece ends with a double bar line.

Das Tonleitertraining 3



do mi su la bo do do mi su la bo do bo la su mi su mi do

The musical notation for Das Tonleitertraining 3 is written on a single staff in 4/4 time. It consists of three measures. The first measure contains a half note 'do', a quarter note 'mi', a quarter note 'su', a quarter note 'la', a quarter note 'bo', and a half note 'do'. The second measure contains a half note 'do', a quarter note 'mi', a quarter note 'su', a quarter note 'la', a quarter note 'bo', a quarter note 'do', a quarter note 'bo', and a half note 'la'. The third measure contains a half note 'do', a quarter note 'su', a quarter note 'mi', a quarter note 'su', a quarter note 'mi', and a half note 'do'. The piece ends with a double bar line.