



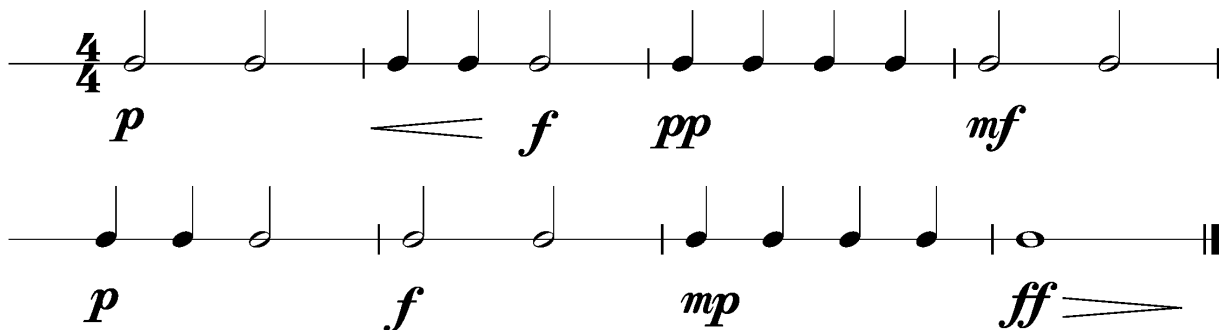
Anforderungen:

- 2 selbstgewählte Spielstücke: 1 schnelles, 1 langsames Spielstück solistisch oder im Ensemble mit anderen Prüflingen / KollegInnen und 1 Stück aus der Literaturliste in Absprache mit der Lehrperson (max. 12Pkt)
- 3 Tonleitertrainings ab Vorlage (max. 6Pkt)
- Rhythmus klatschen mit  inkl. Pausen (max. 2Pkt)
- 1 Lied ab Blatt spielen mit  (max. 2Pkt)
- Dynamikspiel *ff f mf mp p pp cresc. decresc.* (max. 2Pkt)

Dauer des gesamten Vorspiels ca. 10 Minuten

Nimm dieses Blatt zum Diplomvorspiel mit!

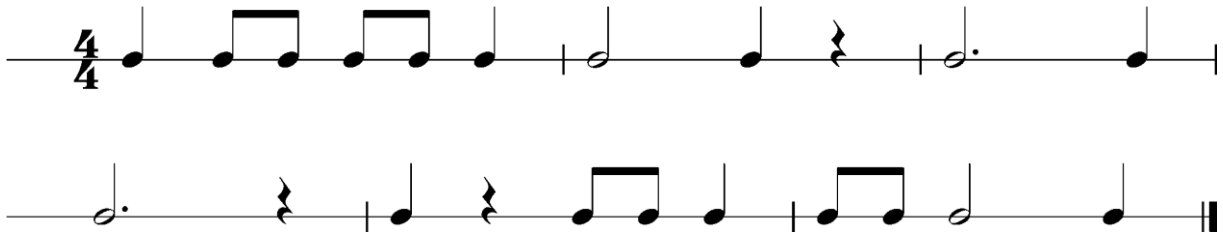
Dies ist ein Beispiel eines Dynamikchecks. Am Vorspieltag erhältst du einen ähnlichen Check (spielen, klatschen oder sprechen).



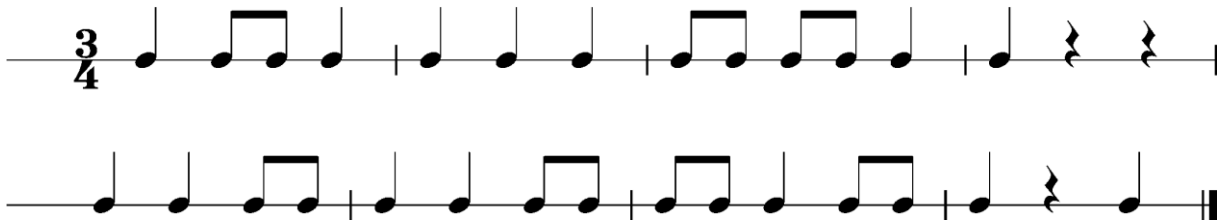
The image shows two staves of musical notation in 4/4 time, illustrating a dynamic check exercise. The first staff contains four measures of music with the following dynamics: *p*, *f*, *pp*, and *mf*. The second staff contains four measures of music with the following dynamics: *p*, *f*, *mp*, and *ff*. The notation includes quarter notes, eighth notes, and a half note, with dynamic markings placed below the notes.

Dies sind zwei Beispiele eines Rhythmuschecks. Am Vorspieltag erhältst du einen ähnlichen Check (spielen, klatschen oder sprechen).

Beispiel 1



Beispiel 2



Die Tonleitertrainings 1 bis 3 kannst du üben, da du diese am Vorspieltag vorspielen musst.

Tonleitertraining 1

Musical notation for Tonleitertraining 1, consisting of four staves of a C major scale in 4/4 time. The first staff shows the ascending scale: C4, D4, E4, F4, G4, A4, B4, C5. The second staff shows the descending scale: C5, B4, A4, G4, F4, E4, D4, C4. The third staff shows the ascending scale with a different fingering: C4, D4, E4, F4, G4, A4, B4, C5. The fourth staff shows the descending scale with a different fingering: C5, B4, A4, G4, F4, E4, D4, C4.

Das Tonleitertraining 2

Musical notation for Das Tonleitertraining 2, consisting of four staves of a D major scale in 4/4 time. The first staff shows the ascending scale: D4, E4, F#4, G4, A4, B4, C#5, D5. The second staff shows the descending scale: D5, C#5, B4, A4, G4, F#4, E4, D4. The third staff shows the ascending scale with a different fingering: D4, E4, F#4, G4, A4, B4, C#5, D5. The fourth staff shows the descending scale with a different fingering: D5, C#5, B4, A4, G4, F#4, E4, D4.

Das Tonleitertraining 3

The image shows a musical score for Alt-Blockflöte, titled "Das Tonleitertraining 3". It consists of four staves of music, each starting with a treble clef and a key signature of one flat (B-flat). The first staff is in 4/4 time, and the subsequent three staves are in 3/4 time. Each staff contains two measures of music, with notes connected by beams. The notes are: Staff 1: C4, D4, E4, F4, G4, A4, B4, C5; Staff 2: C4, B3, A3, G3, F3, E3, D3, C3; Staff 3: C4, B3, A3, G3, F3, E3, D3, C3; Staff 4: C4, D4, E4, F4, G4, A4, B4, C5. The fourth staff ends with a double bar line.