


## Anforderungen:

- 3 Vortragsstücke, Total ca. 8 Minuten (max. 18Pkt)
- Chromatische Tonleiter (max. 2Pkt)
- 7 Tonleitertrainings ab Vorlage (max. 6Pkt)
- 3 Molltonleitern (äolisch) ab Vorlage (max. 2Pkt)
- Bluestonleiter (max. 2Pkt)
- Dynamikcheck (max. 2Pkt)
- Rhythmuscheck (max. 2Pkt)
- Ab Blattspiel mit  oder Improvisation mit Bluestonleiter (max. 2Pkt)

Dauer des gesamten Vorspiels ca. 20 Minuten

**Nimm dieses Blatt zum Diplomvorspiel mit!**

## Chromatische Tonleiter

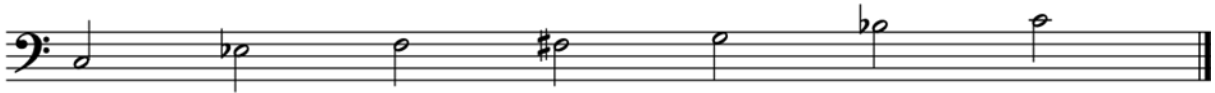


## Tonleitertraining 1

C-Dur



## Bluestonleiter



## Tonleitertraining 2

G-Dur



## Tonleitertraining 3

D-Dur



## Molltonleiter 1

E-Moll



## Tonleitertraining 4

A-Dur



**Tonleitertraining 5**

F-Dur

Two staves of musical notation for F-Dur. The first staff shows the ascending and descending scales. The second staff shows the ascending and descending scales with triplet exercises.

**Molltonleiter 2**

D-Moll

Two staves of musical notation for D-Moll. The first staff shows the ascending and descending scales. The second staff shows the ascending and descending scales with triplet exercises.

**Tonleitertraining 6**

B-Dur

Two staves of musical notation for B-Dur. The first staff shows the ascending and descending scales. The second staff shows the ascending and descending scales with triplet exercises.

**Tonleitertraining 7**

Es-Dur

Two staves of musical notation for Es-Dur. The first staff shows the ascending and descending scales. The second staff shows the ascending and descending scales with triplet exercises.

## Molltonleiter 3

A-Moll

