


## Anforderungen:

- 3 Vortragsstücke, Total ca. 8 Minuten (max. 18Pkt)
- Chromatische Tonleiter (max. 3Pkt)
- 7 Tonleitertrainings ab Vorlage (max. 6Pkt)
- 3 Molltonleitern (äolisch) ab Vorlage (max. 3Pkt)
- Dynamikcheck (max. 2Pkt)
- Rhythmuscheck (max. 2Pkt)
- Ab Blattspiel mit  (max. 2Pkt)

Dauer des gesamten Vorspiels ca. 20 Minuten

**Nimm dieses Blatt zum Diplomvorspiel mit!**

### Chromatische Tonleiter



### Tonleitertraining 1



Tonleitertraining 2



Tonleitertraining 3



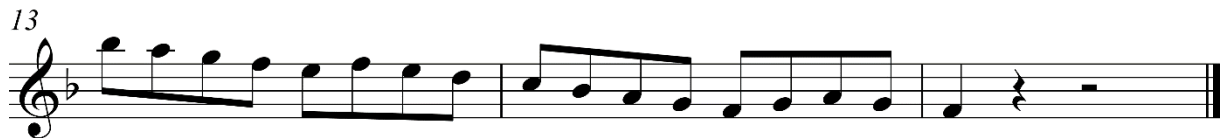
Molltonleiter 1



Tonleitertraining 4



Tonleitertraining 5



Molltonleiter 2



Tonleitertraining 6

Musical notation for Tonleitertraining 6, measures 1-13. The piece is in G minor (one flat) and 4/4 time. It consists of four staves of music. The first staff starts at measure 1, the second at measure 5, the third at measure 9, and the fourth at measure 13. The melody is a scale-like exercise with eighth and sixteenth notes, ending with a fermata on the final note.

Tonleitertraining 7

Musical notation for Tonleitertraining 7, measures 1-13. The piece is in E-flat major (two flats) and 4/4 time. It consists of four staves of music. The first staff starts at measure 1, the second at measure 5, the third at measure 9, and the fourth at measure 13. The melody is a scale-like exercise with eighth and sixteenth notes, ending with a fermata on the final note.

Molltonleiter 3

Musical notation for Molltonleiter 3. The piece is in D major (two sharps) and 4/4 time. It consists of a single staff of music. The melody is a scale-like exercise with eighth and sixteenth notes, ending with a fermata on the final note.