

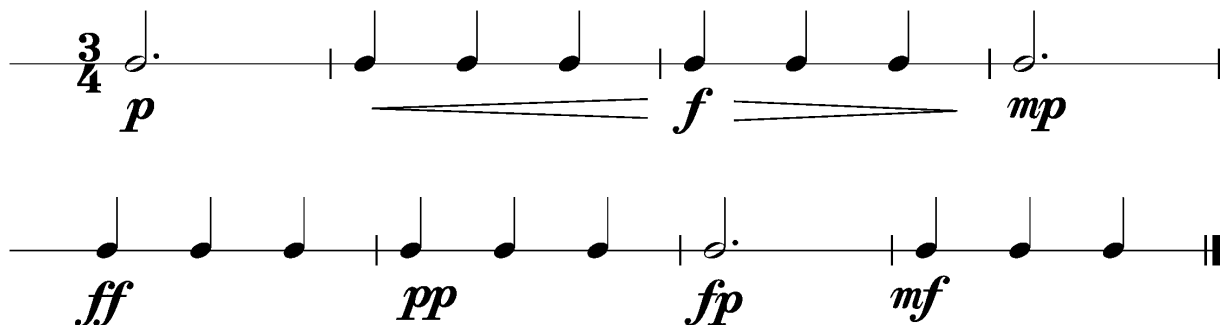
Anforderungen:

- 3 selbstgewählte Spielstücke: 1 schnelles, 1 langsames, 1 auswendiges (ca. 1 Min) oder zu 2./3. im Ensemble (max. 12Pkt)
- 5 Tonleitertrainings ab Vorlage (max. 10Pkt)
- 2 Lieder/Stücke ab Blatt spielen im $4/4$ $3/4$ $2/4$ und mit \circ ♩ ♪ ♫ (max. 2Pkt)
- Rhythmus klatschen mit \circ ♩ ♪ ♫ (max. 2Pkt)
- Dynamikspiel *ff f mf mp p pp sfz fp cresc. decresc.* (max. 2Pkt)

Dauer des gesamten Vorspiels ca. 15 Minuten

Nimm dieses Blatt zum Diplomvorspiel mit!

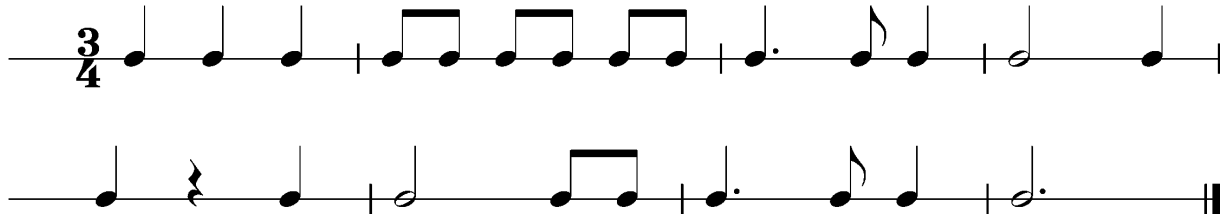
Dies ist ein Beispiel eines Dynamikchecks. Am Vorspieltag erhältst du einen ähnlichen (diesen kannst du spielen, klatschen oder sprechen).



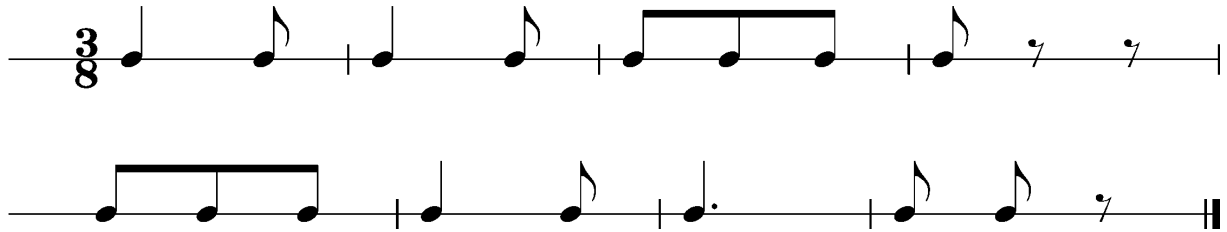
The image shows two staves of musical notation for a dynamic check exercise in 3/4 time. The first staff starts with a 3/4 time signature and a half note with a dynamic marking of *p*. This is followed by a sequence of notes: a quarter note, two eighth notes, a quarter note, a half note, and another quarter note. A dynamic marking of *f* is placed under the second quarter note, and a dynamic marking of *mp* is placed under the final half note. The second staff continues the sequence with a quarter note marked *ff*, followed by two eighth notes marked *pp*, a quarter note marked *fp*, and a final quarter note marked *mf*. The piece ends with a double bar line.

Dies sind zwei Beispiele eines Rhythmuschecks. Am Vorspieltag erhältst du einen ähnlichen Check (spielen, klatschen oder sprechen).

Beispiel 1



Beispiel 2



Das Tonleitertraining 1 bis 5 kannst du üben, da du diese am praktischen Vorspieltag vorspielen musst.

Tonleitertraining 1



Tonleitertraining 2

Two staves of musical notation for Tonleitertraining 2. The first staff contains the first four measures of the scale, and the second staff contains the last four measures. The key signature has one flat (B-flat) and the time signature is 3/4. The notes are: G2, A2, Bb2, C3, D3, E3, F3, G3, F3, E3, D3, C3, Bb2, A2, G2.

Tonleitertraining 3

Two staves of musical notation for Tonleitertraining 3. The first staff contains the first four measures of the scale, and the second staff contains the last four measures. The key signature has one flat (B-flat) and the time signature is 3/4. The notes are: G2, A2, Bb2, C3, D3, E3, F3, G3, F3, E3, D3, C3, Bb2, A2, G2.

Tonleitertraining 4

Two staves of musical notation for Tonleitertraining 4. The first staff contains the first four measures of the scale, and the second staff contains the last four measures. The key signature has one sharp (F#) and the time signature is 3/4. The notes are: G2, A2, B2, C3, D3, E3, F#3, G3, F#3, E3, D3, C3, B2, A2, G2.

Tonleitertraining 5

Two staves of musical notation for Tonleitertraining 5. The first staff contains the first four measures of the scale, and the second staff contains the last four measures. The key signature has one sharp (F#) and the time signature is 3/4. The notes are: G2, A2, B2, C3, D3, E3, F#3, G3, F#3, E3, D3, C3, B2, A2, G2.