

## Anforderungen:

- 3 – 6 Vortragsstücke in möglichst verschiedenen Stilen, Total ca. 10 Minuten
- Chromatische Tonleiter, auswendig
- 7 Tonleitertrainings ab Vorlage
- 3 Molltonleitern, je äolisch/harmonisch/melodisch ab Vorlage
- Bluestonleitern, ab Vorlage
- Dynamikspiel
- Rhythmusspiel
- Ab Blattspiel mit  $\circ$   $\cdot$   $\cdot$   $\cdot$   $\cdot$   $\cdot$   $\cdot$   $\cdot$  oder Improvisation mit Bluestonleiter
- Dauer des gesamten Vorspiels ca. 20 – 25 Minuten

Dauer des gesamten Checks ca. 20 - 25 Minuten

**Nimm dieses Blatt zum Diplomvorspiel mit!**

## Chromatische Tonleiter (auswendig)



The image shows three lines of musical notation in treble clef, representing chromatic scales. The first line shows an ascending scale from C4 to G4. The second line shows a descending scale from G4 to C4, with a whole rest in the second measure. The third line shows an ascending scale from C4 to G4, with a whole rest in the final measure.

Bluestonleiter

Two staves of musical notation for the Blues scale in G major. The first staff shows the ascending scale: G4, A4, B4, C#5, D5, E5, F#5, G5. The second staff shows the descending scale: G5, F#5, E5, D5, C#5, B4, A4, G4. The notes are written in a treble clef with a 4/4 time signature.

Tonleitertraining 1

Four staves of musical notation for scale training exercises in 4/4 time. Each staff starts with a measure number (3, 5, 7) and contains a sequence of eighth notes. The first staff is in G major (G4, A4, B4, C#5, D5, E5, F#5, G5). The second staff is in A major (A4, B4, C#5, D5, E5, F#5, G5, A5). The third staff is in B major (B4, C#5, D5, E5, F#5, G5, A5, B5). The fourth staff is in C major (C4, D4, E4, F4, G4, A4, B4, C5). Each exercise ends with a quarter rest and a fermata.

a-Molltonleiter – rein, harmonisch und melodisch

Three staves of musical notation for the A minor scale in 4/4 time. The first staff shows the natural A minor scale: A4, B4, C5, D5, E5, F5, G5, A5. The second staff shows the harmonic A minor scale: A4, B4, C5, D5, E5, F#5, G5, A5. The third staff shows the melodic A minor scale: A4, B4, C5, D5, E5, F#5, G5, A5 for the ascending part, and A5, G5, F#5, E5, D5, C5, B4, A4 for the descending part. The notes are written in a treble clef.

Tonleitertraining 2

3

5

7

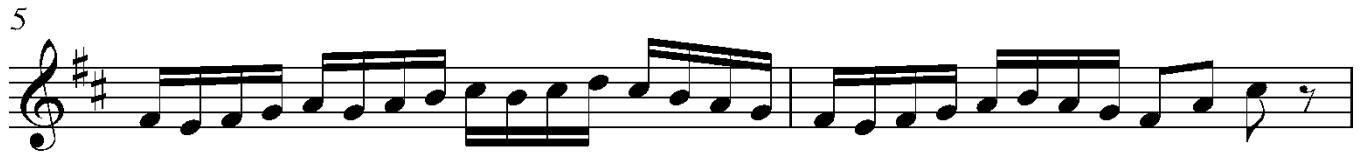
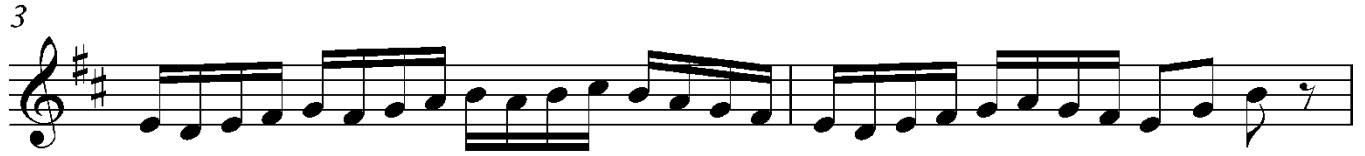
e-Molltonleiter – rein, harmonisch und melodisch

1

2

3

## Tonleitertraining 3



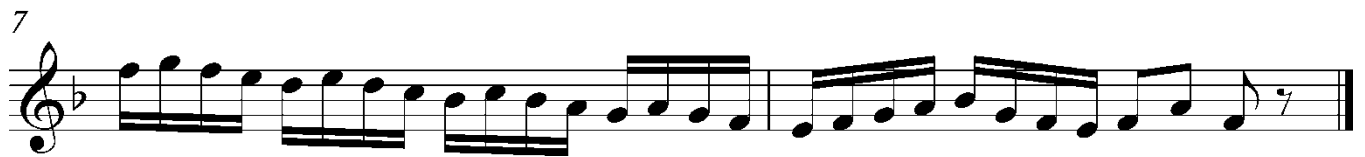
## h-Molltonleiter – rein, harmonisch und melodisch



## Tonleitertraining 4



## Tonleitertraining 5



Tonleitertraining 6

1

3

5

7

Tonleitertraining 7 (Zerlegung und Schlagrhythmus)

C G<sup>7</sup> E Am

5 Em A<sup>7</sup> D<sup>7</sup> C

9 F Dm G E<sup>7</sup>

13 Hm A G C