

Anforderungen:

- 3 – 6 Vortragsstücke in möglichst verschiedenen Stilen, Total ca. 10 Minuten
- Chromatische Tonleiter, auswendig
- 7 Tonleitertrainings ab Vorlage
- 3 Molltonleitern, je äolisch/harmonisch/melodisch ab Vorlage
- Bluestonleitern, ab Vorlage
- Dynamikspiel
- Rhythmusspiel
- Ab Blattspiel mit \circ \cdot \cdot \cdot \cdot \cdot \cdot \cdot oder Improvisation mit Bluestonleiter
- Dauer des gesamten Vorspiels ca. 20 – 25 Minuten

Dauer des gesamten Checks ca. 20 - 25 Minuten

Nimm dieses Blatt zum Diplomvorspiel mit!

Chromatische Tonleiter (auswendig)



The image displays three staves of musical notation for a chromatic scale exercise. The first staff shows a chromatic scale ascending from C4 to G4. The second staff shows a chromatic scale descending from G4 to C4. The third staff shows a chromatic scale descending from C4 to G3.

Bluestonleiter

Two staves of musical notation for the Blues scale in G major. The first staff shows the ascending scale: G4, A4, B4, C#5, D5, E5, F#5, G5. The second staff shows the descending scale: G5, F#5, E5, D5, C#5, B4, A4, G4. The notes are written in a treble clef with a 4/4 time signature.

Tonleitertraining 1

Four staves of musical notation for a scale training exercise in 4/4 time. The first staff shows the ascending scale: G4, A4, B4, C5, D5, E5, F#5, G5. The second staff shows the descending scale: G5, F#5, E5, D5, C5, B4, A4, G4. The third and fourth staves show the ascending and descending scales respectively, but with a 3-measure rest at the beginning of each line, indicated by the number '3' above the staff. The notes are written in a treble clef.

a-Molltonleiter – rein, harmonisch und melodisch

Three staves of musical notation for the A minor scale in 4/4 time. The first staff shows the ascending scale: A3, B3, C4, D4, E4, F4, G4, A4. The second staff shows the descending scale: A4, G4, F4, E4, D4, C4, B3, A3. The third staff shows the ascending scale with a 3-measure rest at the beginning, indicated by the number '3' above the staff. The notes are written in a treble clef.

Tonleitertraining 2

1

3

5

7

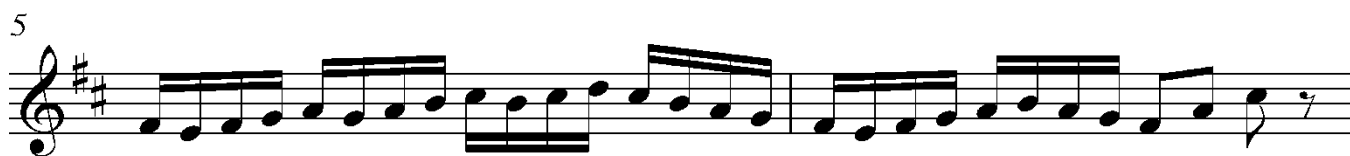
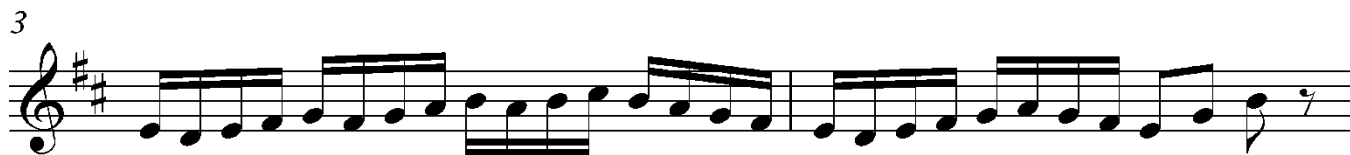
e-Molltonleiter – rein, harmonisch und melodisch

1

2

3

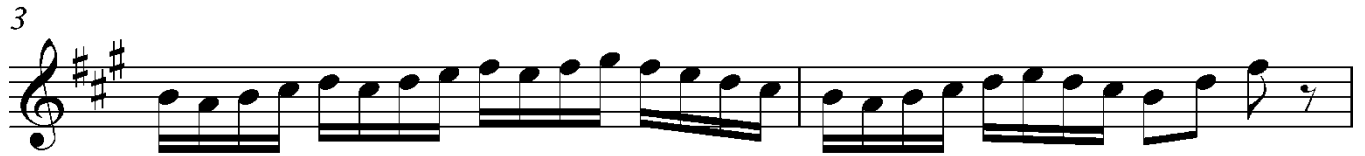
Tonleitertraining 3



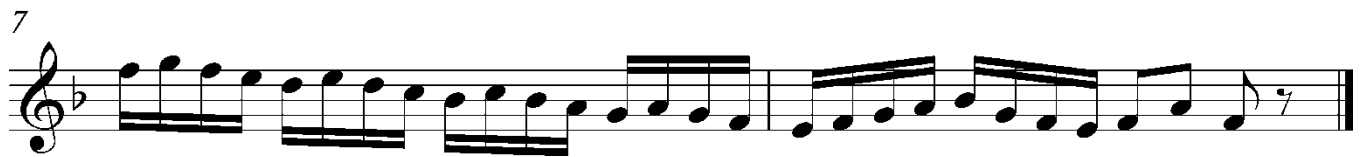
h-Molltonleiter – rein, harmonisch und melodisch



Tonleitertraining 4



Tonleitertraining 5



Tonleitertraining 6

3

5

7

Tonleitertraining 7 (Zerlegung und Schlagrhythmus)

C G⁷ E Am

5 Em A⁷ D⁷ C

9 F Dm G E⁷

13 Hm A G C