


Anforderungen:

- 3 Vortragsstücke, Total ca. 8 Minuten (max. 18Pkt)
- Chromatische Tonleiter (max. 2Pkt)
- 7 Tonleitertrainings ab Vorlage (max. 6Pkt)
- 3 Molltonleitern (äolisch) ab Vorlage (max. 2Pkt)
- Bluestonleiter (max. 2Pkt)
- Dynamikcheck (max. 2Pkt)
- Rhythmuscheck (max. 2Pkt)
- Ab Blattspiel mit  oder Improvisation mit Bluestonleiter (max. 2Pkt)

Dauer des gesamten Vorspiels ca. 20 Minuten

Nimm dieses Blatt zum Diplomvorspiel mit!

Chromatische Tonleiter



Tonleitertraining 1



Bluestonleiter



Tonleitertraining 2



Tonleitertraining 3



a-Molltonleiter



Tonleitertraining 4

Musical notation for Tonleitertraining 4, consisting of four staves of music in G major (one sharp) and 4/4 time. The first staff starts on G4 and ascends to G5. The second staff starts on G4 and descends to G3. The third staff starts on G4 and ascends to G5. The fourth staff starts on G4 and descends to G3. Each staff ends with a double bar line.

Tonleitertraining 5

Musical notation for Tonleitertraining 5, consisting of four staves of music in F major (one flat) and 4/4 time. The first staff starts on F4 and ascends to F5. The second staff starts on F4 and descends to F3. The third staff starts on F4 and ascends to F5. The fourth staff starts on F4 and descends to F3. Each staff ends with a double bar line.

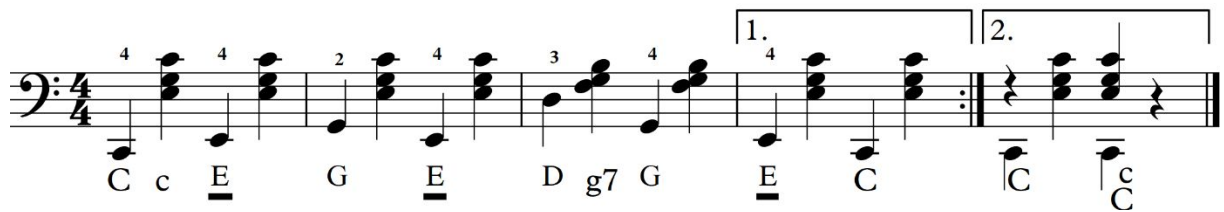
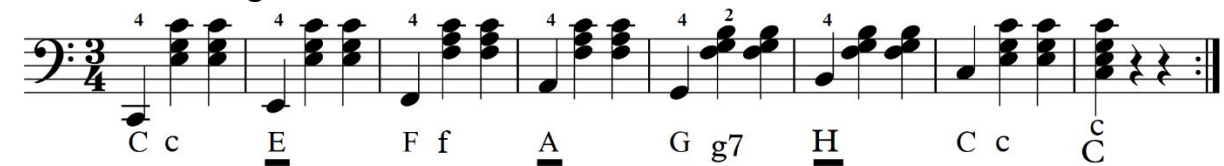
e-Molltonleiter

Musical notation for e-Molltonleiter, consisting of one staff of music in E minor (two sharps) and 4/4 time. The scale starts on E4 and descends to E3. The staff ends with a double bar line.

Tonleitertraining 6



Tonleitertraining 7



h-Molltonleiter

