


Anforderungen:

- 3 Vortragsstücke, Total ca. 8 Minuten (max. 18Pkt)
- Chromatische Tonleiter (max. 2Pkt)
- 7 Tonleitertrainings ab Vorlage (max. 6Pkt)
- 3 Molltonleitern (äolisch) ab Vorlage (max. 2Pkt)
- Bluestonleiter (max. 2Pkt)
- Dynamikcheck (max. 2Pkt)
- Rhythmuscheck (max. 2Pkt)
- Ab Blattspiel mit  oder Improvisation mit Bluestonleiter (max. 2Pkt)

Dauer des gesamten Vorspiels ca. 20 Minuten

Nimm dieses Blatt zum Diplomvorspiel mit!

Chromatische Tonleiter



Tonleitertraining 1



Bluestonleiter



Tonleitertraining 2



Tonleitertraining 3



Molltonleiter 1



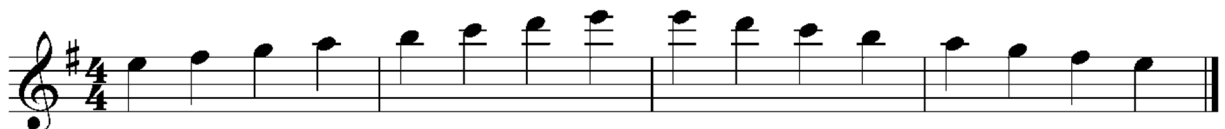
Tonleitertraining 4



Tonleitertraining 5



Molltonleiter 2



Tonleitertraining 6

Musical notation for Tonleitertraining 6, measures 1-13. The piece is in 4/4 time with a key signature of two flats (B-flat and E-flat). The melody consists of eighth-note runs. Measure numbers 5, 9, and 13 are indicated at the start of their respective lines.

Tonleitertraining 7

Musical notation for Tonleitertraining 7, measures 1-13. The piece is in 4/4 time with a key signature of three flats (B-flat, E-flat, and A-flat). The melody consists of eighth-note runs. Measure numbers 5, 9, and 13 are indicated at the start of their respective lines.

Molltonleiter 3

Musical notation for Molltonleiter 3, measures 1-8. The piece is in 4/4 time with a key signature of two flats (B-flat and E-flat). The melody consists of quarter-note runs.