

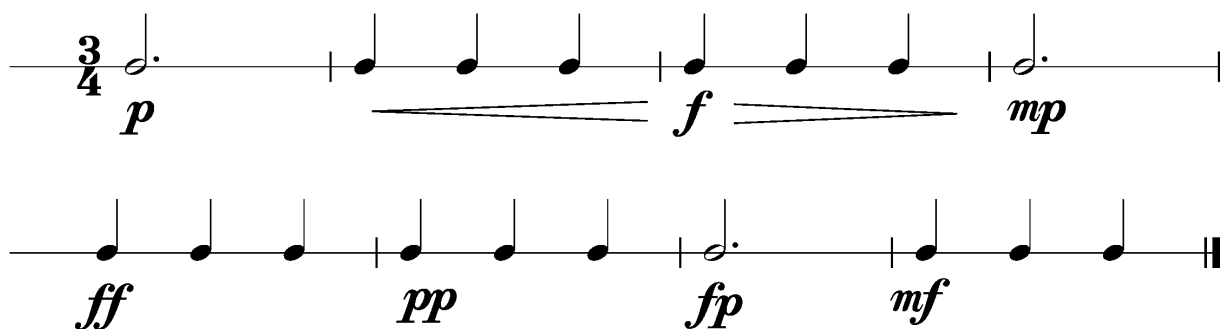
Anforderungen:

- 3 selbstgewählte Spielstücke: 1 schnelles, 1 langsames, 1 auswendiges (ca. 1 Min) oder zu 2./3. im Ensemble (max. 12Pkt)
- 5 Tonleitertrainings ab Vorlage (max. 10Pkt)
- 2 Lieder/Stücke ab Blatt spielen im $4/4$ $3/4$ $2/4$ und mit \circ ♩ ♪ ♫ (max. 2Pkt)
- Rhythmus klatschen mit \circ ♩ ♪ ♫ (max. 2Pkt)
- Dynamikspiel *ff f mf mp p pp sfz fp cresc. decresc.* (max. 2Pkt)

Dauer des gesamten Vorspiels ca. 15 Minuten

Nimm dieses Blatt zum Diplomvorspiel mit!

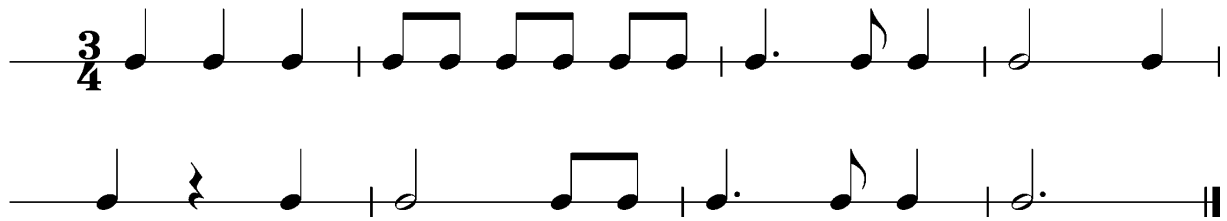
Dies ist ein Beispiel eines Dynamikchecks. Am Vorspieltag erhältst du einen ähnlichen (diesen kannst du spielen, klatschen oder sprechen).



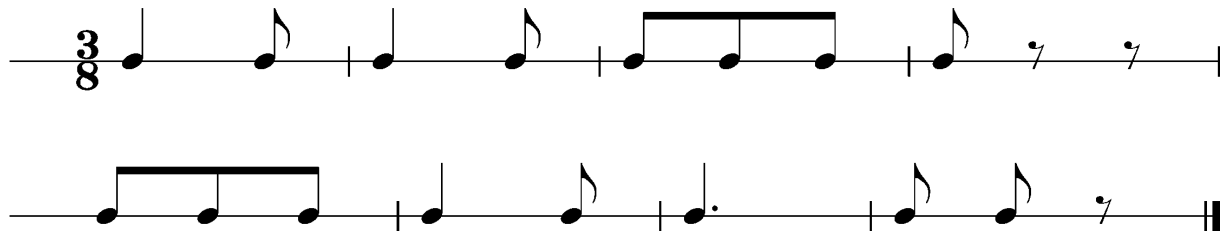
The image shows two staves of musical notation for a dynamics check exercise in 3/4 time. The first staff starts with a 3/4 time signature and a dotted quarter note, followed by a sequence of notes with dynamics *p*, *f*, and *mp*. The second staff shows a sequence of notes with dynamics *ff*, *pp*, *fp*, and *mf*.

Dies sind zwei Beispiele eines Rhythmuschecks. Am Vorspieltag erhältst du einen ähnlichen Check (spielen, klatschen oder sprechen).

Beispiel 1

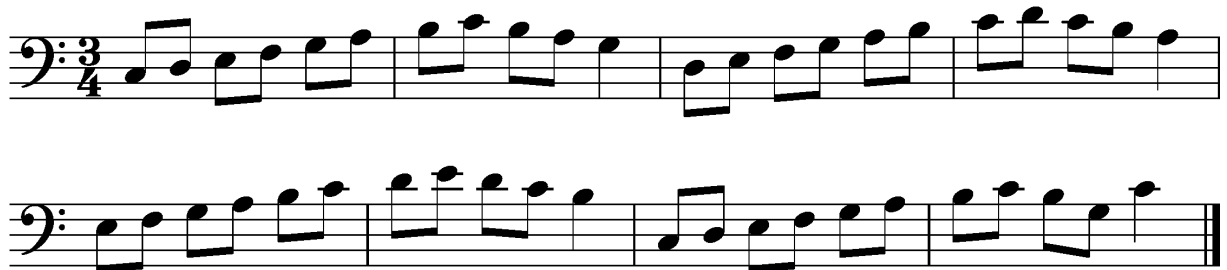


Beispiel 2



Das Tonleitertraining 1 bis 5 kannst du üben, da du diese am praktischen Vorspieltag vorspielen musst.

Tonleitertraining 1



Tonleitertraining 2

Two staves of musical notation for Tonleitertraining 2. The first staff begins with a bass clef, a 3/4 time signature, and a B-flat major key signature (one flat). The melody consists of eighth notes: B-flat, C, D, E, F, G, A, B-flat. The second staff continues the scale with eighth notes: B-flat, A, G, F, E, D, C, B-flat, ending with a double bar line.

Tonleitertraining 3

Two staves of musical notation for Tonleitertraining 3. The first staff begins with a bass clef, a 3/4 time signature, and a B-flat major key signature (one flat). The melody consists of eighth notes: B-flat, C, D, E, F, G, A, B-flat. The second staff continues the scale with eighth notes: B-flat, A, G, F, E, D, C, B-flat, ending with a double bar line.

Tonleitertraining 4

Two staves of musical notation for Tonleitertraining 4. The first staff begins with a bass clef, a 3/4 time signature, and a B major key signature (two sharps). The melody consists of eighth notes: B, C, D, E, F, G, A, B. The second staff continues the scale with eighth notes: B, A, G, F, E, D, C, B, ending with a double bar line.

Tonleitertraining 5

Two staves of musical notation for Tonleitertraining 5. The first staff begins with a bass clef, a 3/4 time signature, and a B major key signature (two sharps). The melody consists of eighth notes: B, C, D, E, F, G, A, B. The second staff continues the scale with eighth notes: B, A, G, F, E, D, C, B, ending with a double bar line.