

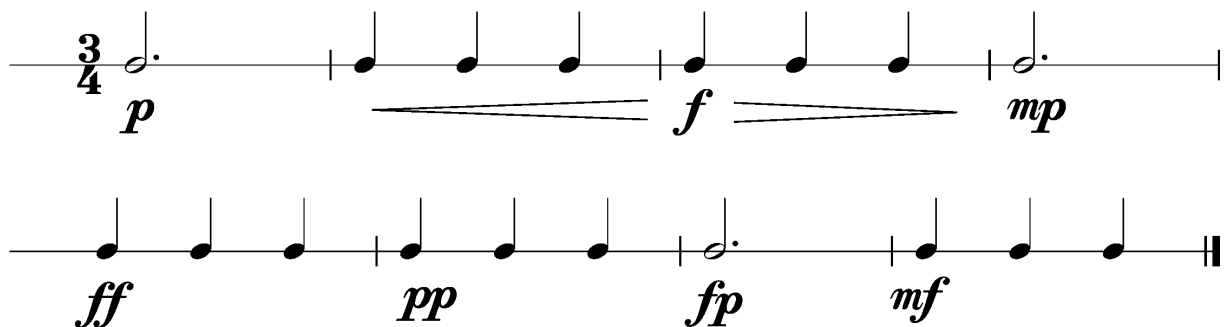
Anforderungen:

- 3 selbstgewählte Spielstücke: 1 schnelles, 1 langsames, 1 auswendiges (ca. 1 Min) oder zu 2./3. im Ensemble (max. 12Pkt)
- 5 Tonleitertrainings ab Vorlage (max. 10Pkt)
- 2 Lieder/Stücke ab Blatt spielen im $4/4$ $3/4$ $2/4$ und mit \circ ♩ ♪ ♫ (max. 2Pkt)
- Rhythmus klatschen mit \circ ♩ ♪ ♫ (max. 2Pkt)
- Dynamikspiel *ff f mf mp p pp sfz fp cresc. decresc.* (max. 2Pkt)

Dauer des gesamten Vorspiels ca. 15 Minuten

Nimm dieses Blatt zum Diplomvorspiel mit!

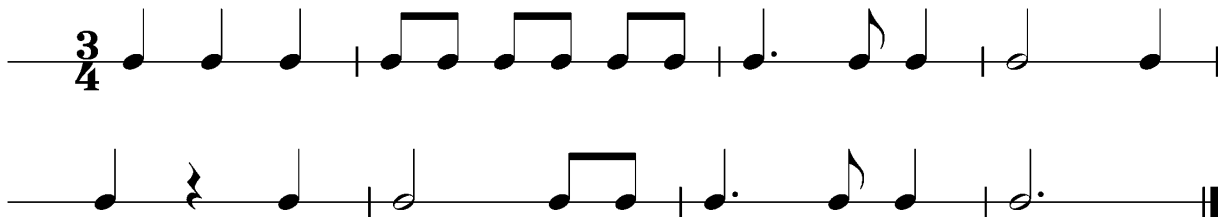
Dies ist ein Beispiel eines Dynamikchecks. Am Vorspieltag erhältst du einen ähnlichen (diesen kannst du spielen, klatschen oder sprechen).



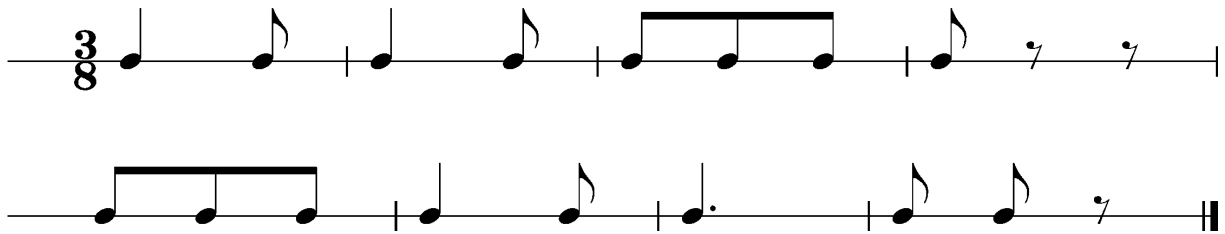
The image shows two staves of musical notation for a dynamic check exercise in 3/4 time. The first staff starts with a 3/4 time signature and a dotted quarter note followed by a half note, marked *p*. This is followed by a sequence of notes: a quarter note, a quarter note, a quarter note, a quarter note, a quarter note, and a dotted quarter note, marked *f*. The second staff starts with a quarter note, a quarter note, a quarter note, a quarter note, a quarter note, a quarter note, a quarter note, and a quarter note, marked *ff*, *pp*, *fp*, and *mf* respectively. The notation includes stems and beams for the notes.

Dies sind zwei Beispiele eines Rhythmuschecks. Am Vorspieltag erhältst du einen ähnlichen Check (spielen, klatschen oder sprechen).

Beispiel 1



Beispiel 2



Das Tonleitertraining 1 bis 5 kannst du üben, da du diese am praktischen Vorspieltag vorspielen musst.

Tonleitertraining 1



Tonleitertraining 2

Two staves of musical notation for Tonleitertraining 2. The first staff shows an ascending scale in G major (one sharp) in 3/4 time, starting on G4 and ending on G5. The second staff shows a descending scale in G major, starting on G5 and ending on G4. The notes are: G4, A4, B4, C5, D5, E5, F#5, G5 (ascending); G5, F#5, E5, D5, C5, B4, A4, G4 (descending).

Tonleitertraining 3

Two staves of musical notation for Tonleitertraining 3. The first staff shows an ascending scale in A major (two sharps) in 3/4 time, starting on A4 and ending on A5. The second staff shows a descending scale in A major, starting on A5 and ending on A4. The notes are: A4, B4, C#5, D5, E5, F#5, G#5, A5 (ascending); A5, G#5, F#5, E5, D5, C#5, B4, A4 (descending).

Tonleitertraining 4

Two staves of musical notation for Tonleitertraining 4. The first staff shows an ascending scale in B major (three sharps) in 3/4 time, starting on B4 and ending on B5. The second staff shows a descending scale in B major, starting on B5 and ending on B4. The notes are: B4, C#5, D#5, E5, F#5, G#5, A#5, B5 (ascending); B5, A#5, G#5, F#5, E5, D#5, C#5, B4 (descending).

Tonleitertraining 5

Two staves of musical notation for Tonleitertraining 5. The first staff shows an ascending scale in F major (one flat) in 3/4 time, starting on F4 and ending on F5. The second staff shows a descending scale in F major, starting on F5 and ending on F4. The notes are: F4, G4, A4, Bb4, C5, D5, E5, F5 (ascending); F5, E5, D5, C5, Bb4, A4, G4, F4 (descending).