

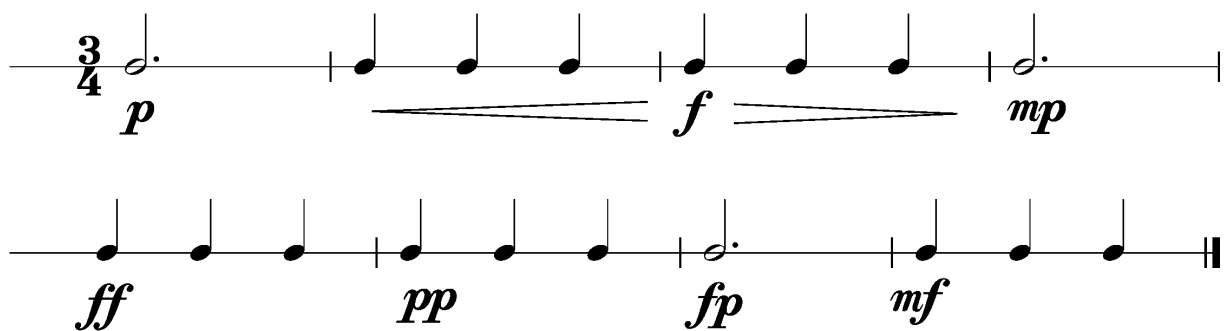
Anforderungen:

- 3 selbstgewählte Spielstücke: 1 schnelles, 1 langsames, 1 auswendiges (ca. 1 Min) oder zu 2./3. im Ensemble (max. 12Pkt)
- 5 Tonleitertrainings ab Vorlage (max. 10Pkt)
- 2 Lieder/Stücke ab Blatt spielen im $4/4$ $3/4$ $2/4$ und mit \circ ♩ ♪ ♫ (max. 2Pkt)
- Rhythmus klatschen mit \circ ♩ ♪ ♫ (max. 2Pkt)
- Dynamikspiel *ff f mf mp p pp sfz fp cresc. decresc.* (max. 2Pkt)

Dauer des gesamten Vorspiels ca. 15 Minuten

Nimm dieses Blatt zum Diplomvorspiel mit!

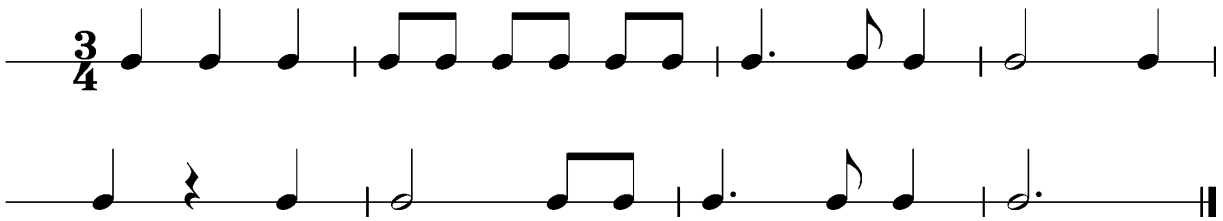
Dies ist ein Beispiel eines Dynamikchecks. Am Vorspieltag erhältst du einen ähnlichen (diesen kannst du spielen, klatschen oder sprechen).



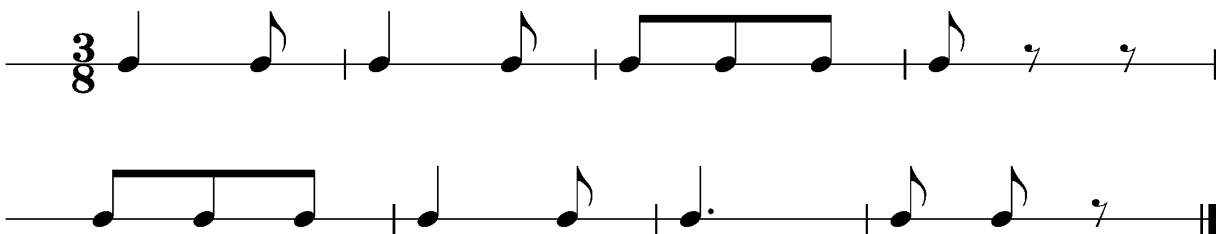
The image shows two musical staves in 3/4 time. The first staff contains a sequence of notes: a dotted quarter note (p), followed by a quarter note (f), a quarter note (f), a quarter note (f), a quarter note (f), a quarter note (f), and a dotted quarter note (mp). The second staff contains a sequence of notes: a quarter note (ff), a quarter note (pp), a quarter note (pp), a quarter note (pp), a quarter note (fp), a quarter note (fp), a quarter note (mf), a quarter note (mf), and a quarter note (mf).

Dies sind zwei Beispiele eines Rhythmuschecks. Am Vorspieltag erhältst du einen ähnlichen Check (spielen, klatschen oder sprechen).

Beispiel 1



Beispiel 2



Das Tonleitertraining 1 bis 5 kannst du üben, da du diese am praktischen Vorspieltag vorspielen musst.

Tonleitertraining 1



Tonleitertraining 2

Two staves of musical notation for Tonleitertraining 2. The key signature has two flats (B-flat and E-flat), and the time signature is 3/4. The first staff contains the first four measures of the ascending scale: D4, E4, F4, G4, A4, Bb4, C5, D5. The second staff contains the last four measures of the descending scale: C5, Bb4, A4, G4, F4, E4, D4, followed by a whole note D4.

Tonleitertraining 3

Two staves of musical notation for Tonleitertraining 3. The key signature has two sharps (F-sharp and C-sharp), and the time signature is 3/4. The first staff contains the first four measures of the ascending scale: D4, E4, F#4, G4, A4, B4, C5, D5. The second staff contains the last four measures of the descending scale: C5, B4, A4, G4, F#4, E4, D4, followed by a whole note D4.

Tonleitertraining 4

Two staves of musical notation for Tonleitertraining 4. The key signature has three sharps (F-sharp, C-sharp, and G-sharp), and the time signature is 3/4. The first staff contains the first four measures of the ascending scale: D4, E4, F#4, G#4, A4, B4, C5, D5. The second staff contains the last four measures of the descending scale: C5, B4, A4, G#4, F#4, E4, D4, followed by a whole note D4.

Tonleitertraining 5

Two staves of musical notation for Tonleitertraining 5. The key signature has four sharps (F-sharp, C-sharp, G-sharp, and D-sharp), and the time signature is 3/4. The first staff contains the first four measures of the ascending scale: D4, E4, F#4, G#4, A4, B4, C5, D5. The second staff contains the last four measures of the descending scale: C5, B4, A4, G#4, F#4, E4, D4, followed by a whole note D4.