

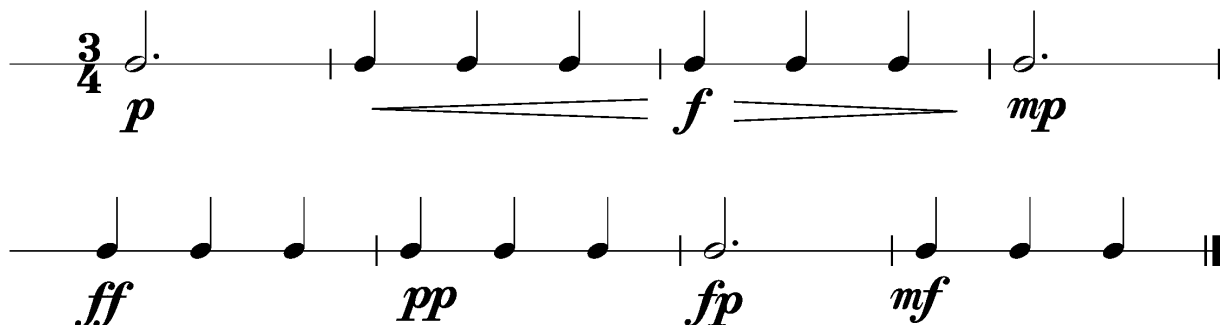
Anforderungen:

- 3 selbstgewählte Spielstücke: 1 schnelles, 1 langsames, 1 auswendiges (ca. 1 Min) oder zu 2./3. im Ensemble (max. 12Pkt)
- 5 Tonleitertrainings ab Vorlage (max. 10Pkt)
- 2 Lieder/Stücke ab Blatt spielen im $4/4$ $3/4$ $2/4$ und mit \circ ♩ ♪ ♫ (max. 2Pkt)
- Rhythmus klatschen mit \circ ♩ ♪ ♫ (max. 2Pkt)
- Dynamikspiel *ff f mf mp p pp sfz fp cresc. decresc.* (max. 2Pkt)

Dauer des gesamten Vorspiels ca. 15 Minuten

Nimm dieses Blatt zum Diplomvorspiel mit!

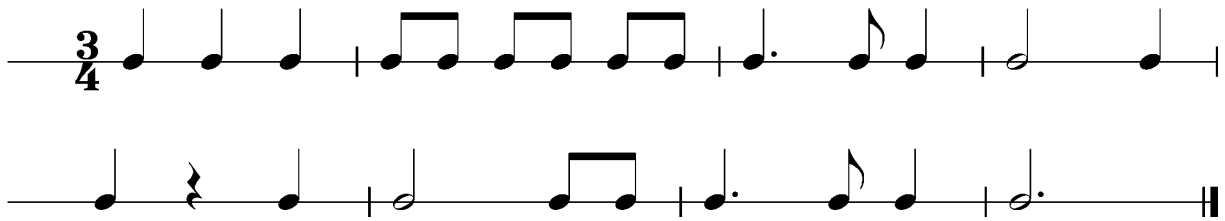
Dies ist ein Beispiel eines Dynamikchecks. Am Vorspieltag erhältst du einen ähnlichen (diesen kannst du spielen, klatschen oder sprechen).



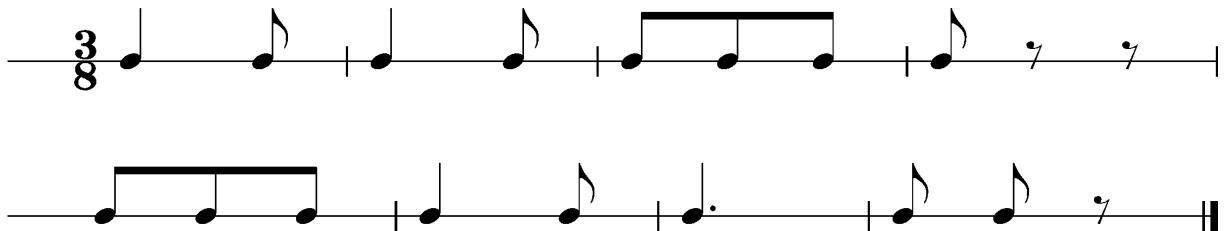
The image shows two staves of musical notation in 3/4 time. The first staff starts with a half note marked *p*. This is followed by a quarter note marked *f*, then another quarter note marked *f*, then a quarter note marked *f*, and finally a half note marked *mp*. The second staff consists of four quarter notes marked *ff*, *pp*, *fp*, and *mf* in sequence. The notation uses stems with dots for notes and a double bar line at the end of the second staff.

Dies sind zwei Beispiele eines Rhythmuschecks. Am Vorspieltag erhältst du einen ähnlichen Check (spielen, klatschen oder sprechen).

Beispiel 1



Beispiel 2



Das Tonleitertraining 1 bis 5 kannst du üben, da du diese am praktischen Vorspieltag vorspielen musst.

Tonleitertraining 1



Tonleitertraining 2

Two staves of musical notation for Tonleitertraining 2. The key signature is G major (one sharp) and the time signature is 3/4. The first staff contains the ascending scale: G2, A2, B2, C3, D3, E3, F#3, G3. The second staff contains the descending scale: F#3, E3, D3, C3, B2, A2, G2, ending with a double bar line.

Tonleitertraining 3

Two staves of musical notation for Tonleitertraining 3. The key signature is A major (two sharps) and the time signature is 3/4. The first staff contains the ascending scale: A2, B2, C#3, D3, E3, F#3, G#3, A3. The second staff contains the descending scale: G#3, F#3, E3, D3, C#3, B2, A2, ending with a double bar line.

Tonleitertraining 4

Two staves of musical notation for Tonleitertraining 4. The key signature is F major (one flat) and the time signature is 3/4. The first staff contains the ascending scale: F2, G2, A2, B2, C3, D3, E3, F3. The second staff contains the descending scale: E3, D3, C3, B2, A2, G2, F2, ending with a double bar line.

Tonleitertraining 5

Two staves of musical notation for Tonleitertraining 5. The key signature is E minor (three flats) and the time signature is 3/4. The first staff contains the ascending scale: E2, F2, G2, A2, B2, C3, D3, E3. The second staff contains the descending scale: D3, C3, B2, A2, G2, F2, E2, ending with a double bar line.