



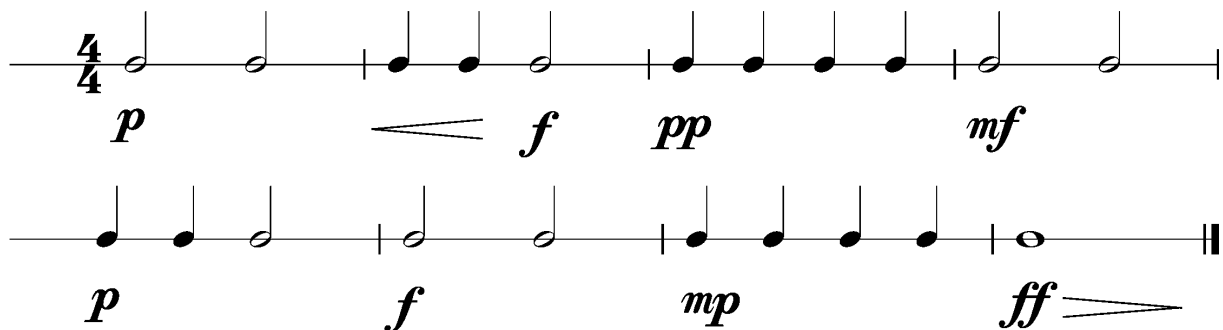
Anforderungen:

- 3 selbstgewählte Spielstücke: 1 schnelles, 1 langsames, 1 selbstgewähltes oder eines im Ensemble mit anderen Prüflingen/KollegenInnen (max. 12Pkt)
- 3 Tonleitertrainings ab Vorlage (max. 6Pkt)
- Rhythmus klatschen mit  inkl. Pausen (max. 2Pkt)
- 1 Lied ab Blatt spielen mit  (max. 2Pkt)
- Dynamikspiel *ff f mf mp p pp cresc. decresc.* (max. 2Pkt)

Dauer des gesamten Vorspiels ca. 10 Minuten

Nimm dieses Blatt zum Diplomvorspiel mit!

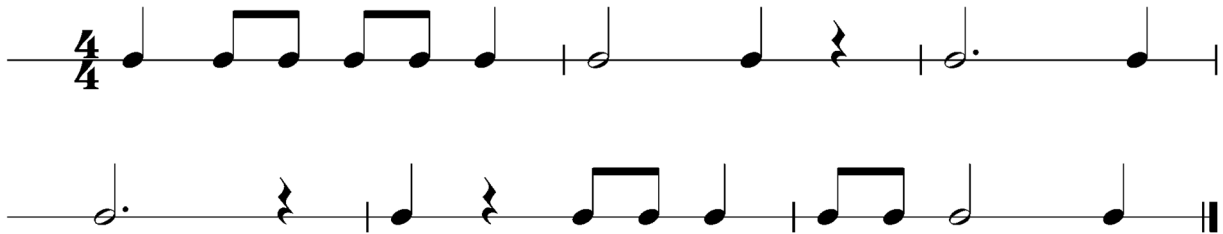
Dies ist ein Beispiel eines Dynamikchecks. Am Vorspieltag erhältst du einen ähnlichen Check (spielen, klatschen oder sprechen).



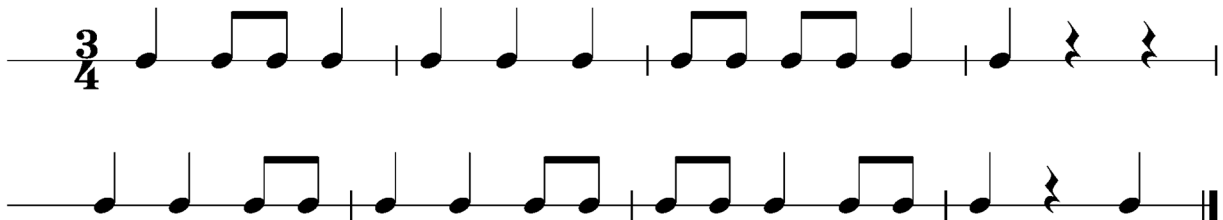
The image shows two staves of musical notation in 4/4 time, illustrating a dynamics check exercise. The first staff contains four measures of music with the following dynamics: *p*, *f*, *pp*, and *mf*. The second staff contains four measures of music with the following dynamics: *p*, *f*, *mp*, and *ff*. The notation includes quarter notes, eighth notes, and a half note, with dynamic markings placed below the notes.

Dies sind zwei Beispiele eines Rhythmuschecks. Am Vorspieltag erhältst du einen ähnlichen Check (spielen, klatschen oder sprechen).

Beispiel 1



Beispiel 2



Die Tonleitertrainings 1 bis 3 kannst du üben, da du diese am Vorspieltag vorspielen musst.

Tonleitertraining 1

Musical notation for Tonleitertraining 1 in C major, 4/4 time, bass clef. The exercise consists of four staves of music. The first staff shows the ascending and descending scales. The second staff shows the ascending and descending scales with slurs. The third staff shows the ascending and descending scales with slurs. The fourth staff shows the ascending and descending scales with slurs and a double bar line at the end.

Das Tonleitertraining 2

Musical notation for Das Tonleitertraining 2 in D major, 4/4 time, bass clef. The exercise consists of four staves of music. The first staff shows the ascending and descending scales. The second staff shows the ascending and descending scales with slurs. The third staff shows the ascending and descending scales with slurs. The fourth staff shows the ascending and descending scales with slurs and a double bar line at the end.

Das Tonleitertraining 3

The image displays a musical score for a cello exercise titled 'Das Tonleitertraining 3'. The score is written in bass clef, 4/4 time, and has a key signature of one flat (B-flat). It consists of four staves, each containing a single melodic line. The first staff begins with a treble clef and a 4/4 time signature, then switches to a bass clef. The melody starts on G2 and proceeds through the notes of a B-flat major scale: G2, A2, Bb2, C3, D3, E3, F3, G3, A3, Bb3, C4, D4, E4, F4, G4. The second staff continues the scale from A3 to Bb3, C4, D4, E4, F4, G4, A4, Bb4, C5, D5, E5, F5, G5. The third staff continues from A4 to Bb4, C5, D5, E5, F5, G5, A5, Bb5, C6, D6, E6, F6, G6. The fourth staff concludes the scale from A5 to Bb5, C6, D6, E6, F6, G6, and ends with a double bar line.