



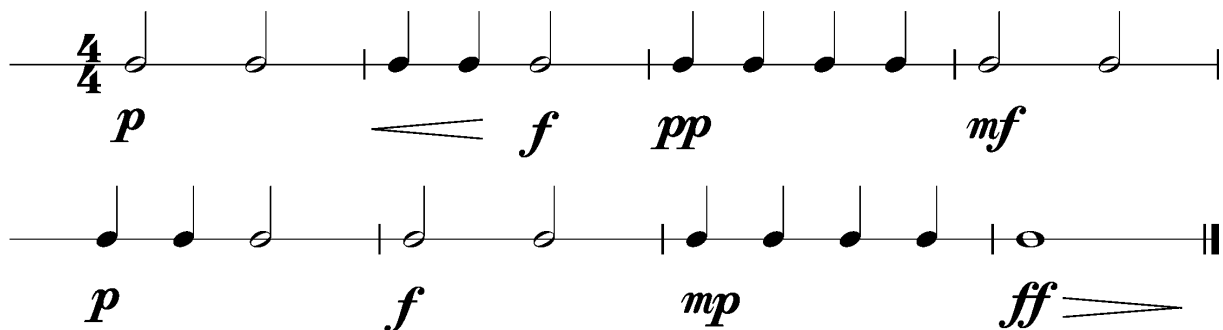
## Anforderungen:

- 3 selbstgewählte Spielstücke: 1 schnelles, 1 langsames, 1 selbstgewähltes oder eines im Ensemble mit anderen Prüflingen/KollegenInnen (max. 12Pkt)
- 3 Tonleitertrainings ab Vorlage (max. 6Pkt)
- Rhythmus klatschen mit  inkl. Pausen (max. 2Pkt)
- 1 Lied ab Blatt spielen mit  (max. 2Pkt)
- Dynamikspiel *ff f mf mp p pp cresc. decresc.* (max. 2Pkt)

Dauer des gesamten Vorspiels ca. 10 Minuten

**Nimm dieses Blatt zum Diplomvorspiel mit!**

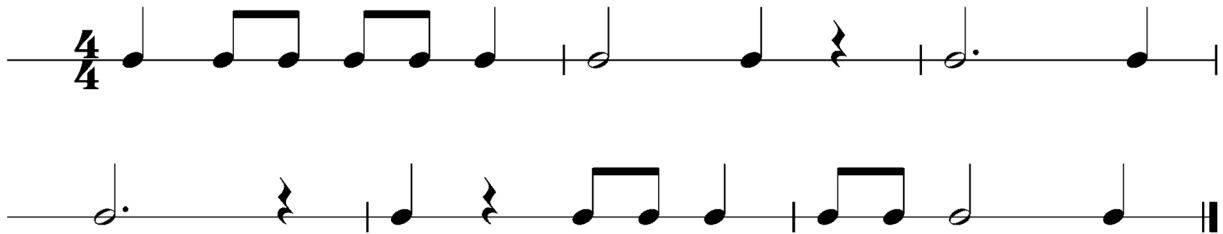
Dies ist ein Beispiel eines Dynamikchecks. Am Vorspieltag erhältst du einen ähnlichen Check (spielen, klatschen oder sprechen).



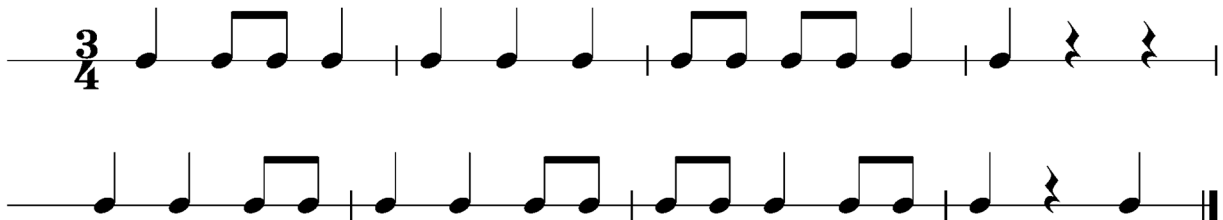
The image shows two staves of musical notation in 4/4 time, illustrating a dynamics check exercise. The first staff contains four measures of music with the following dynamics: *p*, *f*, *pp*, and *mf*. The second staff contains four measures of music with the following dynamics: *p*, *f*, *mp*, and *ff*. The notation includes quarter notes, eighth notes, and a final whole note with a double bar line.

Dies sind zwei Beispiele eines Rhythmuschecks. Am Vorspieltag erhältst du einen ähnlichen Check (spielen, klatschen oder sprechen).

## Beispiel 1



## Beispiel 2



Die Tonleitertrainings 1 bis 3 kannst du üben, da du diese am Vorspieltag vorspielen musst.

## Tonleitertraining 1

Musical notation for Tonleitertraining 1, consisting of four staves of a C major scale in 4/4 time. The first staff shows the ascending scale: C4, D4, E4, F4, G4, A4, B4, C5. The second staff shows the descending scale: C5, B4, A4, G4, F4, E4, D4, C4. The third staff shows the ascending scale with a different fingering: C4, D4, E4, F4, G4, A4, B4, C5. The fourth staff shows the descending scale with a different fingering: C5, B4, A4, G4, F4, E4, D4, C4.

## Das Tonleitertraining 2

Musical notation for Das Tonleitertraining 2, consisting of four staves of a D major scale in 4/4 time. The first staff shows the ascending scale: D4, E4, F#4, G4, A4, B4, C#5, D5. The second staff shows the descending scale: D5, C#5, B4, A4, G4, F#4, E4, D4. The third staff shows the ascending scale with a different fingering: D4, E4, F#4, G4, A4, B4, C#5, D5. The fourth staff shows the descending scale with a different fingering: D5, C#5, B4, A4, G4, F#4, E4, D4.

Das Tonleitertraining 3

The image displays four staves of musical notation, each representing a scale exercise. The notation is in treble clef and 4/4 time. Each staff begins with a treble clef and a 4/4 time signature. The first staff is in C major, the second in D minor, the third in E major, and the fourth in F major. Each exercise consists of two measures of an ascending scale followed by two measures of a descending scale, ending with a double bar line.