



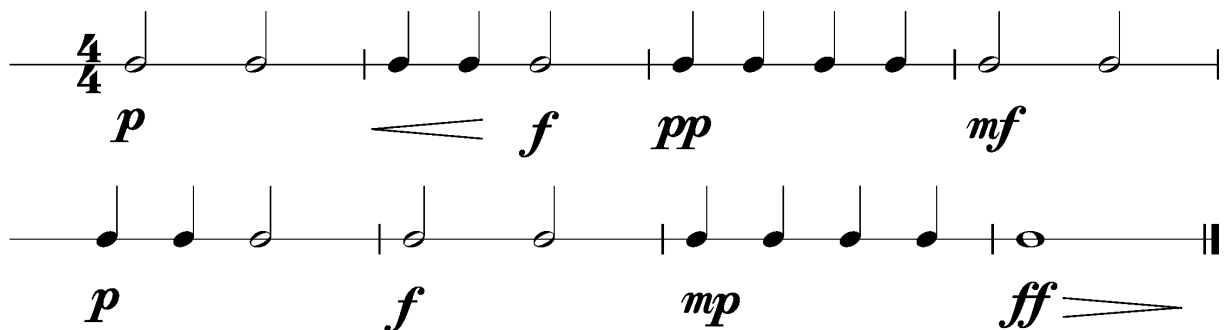
Anforderungen:

- 3 selbstgewählte Spielstücke: 1 schnelles, 1 langsames, 1 selbstgewähltes oder eines im Ensemble mit anderen Prüflingen/KollegenInnen (max. 12Pkt)
- 3 Tonleitertrainings ab Vorlage (max. 6Pkt)
- Rhythmus klatschen mit  inkl. Pausen (max. 2Pkt)
- 1 Lied ab Blatt spielen mit  (max. 2Pkt)
- Dynamikspiel *ff f mf mp p pp cresc. decresc.* (max. 2Pkt)

Dauer des gesamten Vorspiels ca. 10 Minuten

Nimm dieses Blatt zum Diplomvorspiel mit!

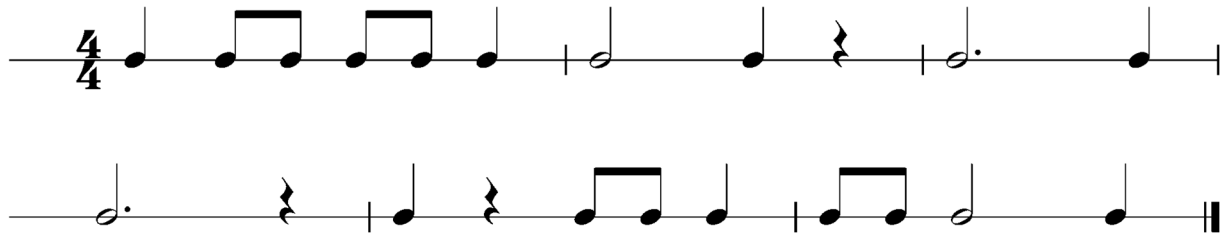
Dies ist ein Beispiel eines Dynamikchecks. Am Vorspieltag erhältst du einen ähnlichen Check (spielen, klatschen oder sprechen).



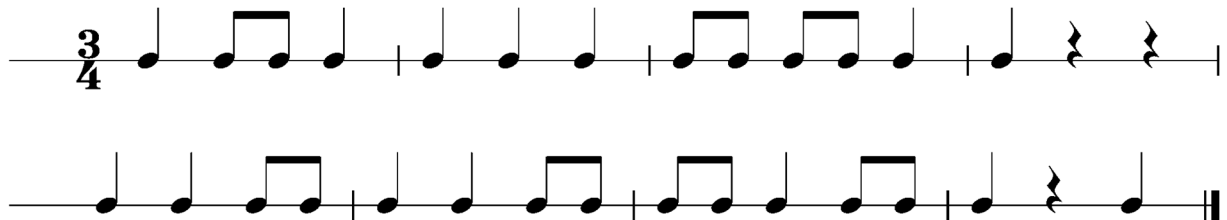
The image shows two staves of musical notation in 4/4 time, illustrating a dynamics check exercise. The first staff contains four measures: the first measure has a half note with dynamics *p*; the second measure has two quarter notes with dynamics *f* and a wedge-shaped decrescendo symbol; the third measure has four eighth notes with dynamics *pp*; the fourth measure has a half note with dynamics *mf*. The second staff contains four measures: the first measure has a half note with dynamics *p*; the second measure has two quarter notes with dynamics *f*; the third measure has four eighth notes with dynamics *mp*; the fourth measure has a half note with dynamics *ff* and a wedge-shaped crescendo symbol. Both staves end with a double bar line.

Dies sind zwei Beispiele eines Rhythmuschecks. Am Vorspieltag erhältst du einen ähnlichen Check (spielen, klatschen oder sprechen).

Beispiel 1



Beispiel 2



Die Tonleitertrainings 1 bis 3 kannst du üben, da du diese am Vorspieltag vorspielen musst.

Tonleitertraining 1



Four staves of musical notation for Tonleitertraining 1, written in 4/4 time. The first staff starts with a treble clef and a 4/4 time signature. The melody consists of quarter notes: C4, D4, E4, F4, G4, A4, B4, C5, B4, A4, G4, F4, E4, D4, C4. The second staff continues the sequence: C4, D4, E4, F4, G4, A4, B4, C5, B4, A4, G4, F4, E4, D4, C4. The third staff continues: C4, D4, E4, F4, G4, A4, B4, C5, B4, A4, G4, F4, E4, D4, C4. The fourth staff continues: C4, D4, E4, F4, G4, A4, B4, C5, B4, A4, G4, F4, E4, D4, C4.

Das Tonleitertraining 2



Four staves of musical notation for Das Tonleitertraining 2, written in 4/4 time. The first staff starts with a treble clef, a key signature of one sharp (F#), and a 4/4 time signature. The melody consists of quarter notes: C4, D4, E4, F#4, G4, A4, B4, C5, B4, A4, G4, F#4, E4, D4, C4. The second staff continues the sequence: C4, D4, E4, F#4, G4, A4, B4, C5, B4, A4, G4, F#4, E4, D4, C4. The third staff continues: C4, D4, E4, F#4, G4, A4, B4, C5, B4, A4, G4, F#4, E4, D4, C4. The fourth staff continues: C4, D4, E4, F#4, G4, A4, B4, C5, B4, A4, G4, F#4, E4, D4, C4.

Das Tonleitertraining 3

The image shows a musical score for a soprano block flute, consisting of four staves. Each staff contains a sequence of notes in a 4/4 time signature, with a key signature of one flat (B-flat). The notes are: C4, D4, E4, F4, G4, A4, Bb4, C5, Bb4, A4, G4, F4, E4, D4, C4. The first staff has a treble clef and a 4/4 time signature. The second, third, and fourth staves have a treble clef and a key signature of one flat. The fourth staff ends with a double bar line.