



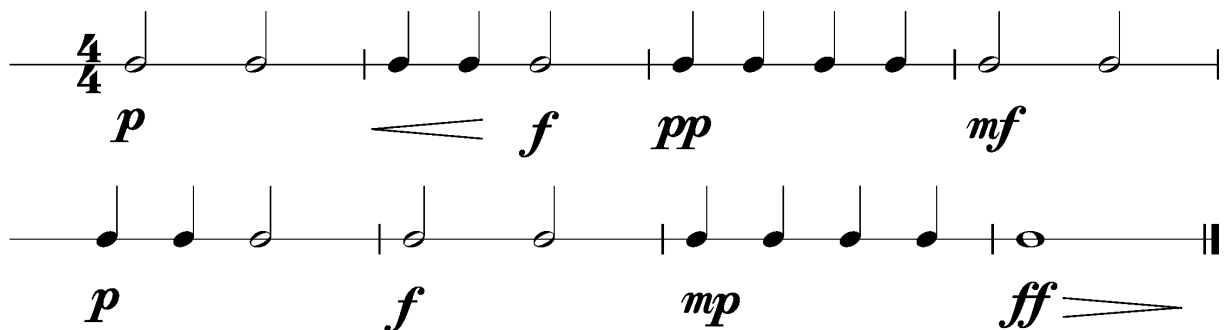
## Anforderungen:

- 3 selbstgewählte Spielstücke: 1 schnelles, 1 langsames, 1 selbstgewähltes oder eines im Ensemble mit anderen Prüflingen/KollegenInnen (max. 12Pkt)
- 3 Tonleitertrainings ab Vorlage (max. 6Pkt)
- Rhythmus klatschen mit  inkl. Pausen (max. 2Pkt)
- 1 Lied ab Blatt spielen mit  (max. 2Pkt)
- Dynamikspiel *ff f mf mp p pp cresc. decresc.* (max. 2Pkt)

Dauer des gesamten Vorspiels ca. 10 Minuten

**Nimm dieses Blatt zum Diplomvorspiel mit!**

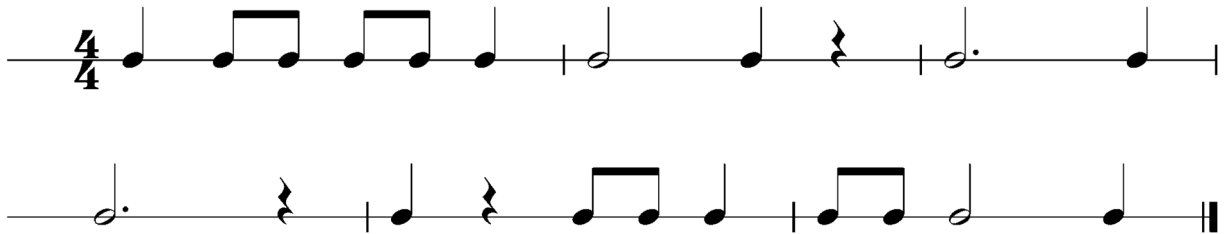
Dies ist ein Beispiel eines Dynamikchecks. Am Vorspieltag erhältst du einen ähnlichen Check (spielen, klatschen oder sprechen).



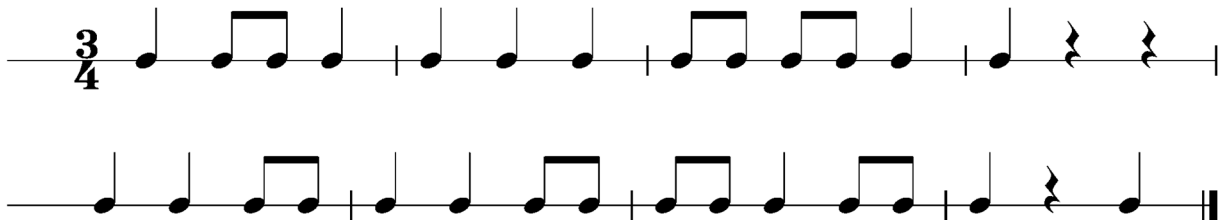
The image shows two staves of musical notation in 4/4 time, illustrating a dynamics check exercise. The first staff contains four measures: the first measure has a half note with dynamics *p*; the second measure has two quarter notes with dynamics *f* and a wedge-shaped decrescendo symbol; the third measure has four eighth notes with dynamics *pp*; and the fourth measure has a half note with dynamics *mf*. The second staff contains four measures: the first measure has a half note with dynamics *p*; the second measure has two quarter notes with dynamics *f*; the third measure has four eighth notes with dynamics *mp*; and the fourth measure has a half note with dynamics *ff* and a wedge-shaped crescendo symbol. Both staves end with a double bar line.

Dies sind zwei Beispiele eines Rhythmuschecks. Am Vorspieltag erhältst du einen ähnlichen Check (spielen, klatschen oder sprechen).

## Beispiel 1



## Beispiel 2



Die Tonleitertrainings 1 bis 3 kannst du üben, da du diese am Vorspieltag vorspielen musst.

## Tonleitertraining 1

The first section contains four staves of musical notation for a scale exercise in bass clef, 4/4 time. The notes are: G2, A2, B2, C3, D3, E3, F3, G3, A3, B3, C4, D4, E4, F4, G4, A4, B4, C5. The exercise is divided into four measures: the first measure contains the first four notes (G2-A2-B2-C3), the second measure contains the next four notes (D3-E3-F3-G3), the third measure contains the next four notes (A3-B3-C4-D4), and the fourth measure contains the final four notes (E4-F4-G4-A4) followed by a whole note G4.

## Das Tonleitertraining 2

The second section contains four staves of musical notation for a scale exercise in bass clef, 4/4 time, with a key signature of one flat (Bb). The notes are: G2, Ab2, Bb2, C3, D3, Eb3, F3, G3, Ab3, Bb3, C4, D4, Eb4, F4, G4, Ab4, Bb4, C5. The exercise is divided into four measures: the first measure contains the first four notes (G2-Ab2-Bb2-C3), the second measure contains the next four notes (D3-Eb3-F3-G3), the third measure contains the next four notes (Ab3-Bb3-C4-D4), and the fourth measure contains the final four notes (Eb4-F4-G4-Ab4) followed by a whole note G4.

## Das Tonleitertraining 3

The image displays four staves of musical notation for a bass clef instrument in 4/4 time, with a key signature of one sharp (F#). Each staff contains a scale exercise starting on D4 and ending on D5. The exercises are as follows:

- Staff 1: D4 quarter, E4 quarter, F#4 quarter, G4 quarter, A4 quarter, B4 quarter, C5 quarter, D5 quarter.
- Staff 2: D4 quarter, E4 quarter, F#4 quarter, G4 quarter, A4 quarter, B4 quarter, C5 quarter, D5 quarter.
- Staff 3: D4 quarter, E4 quarter, F#4 quarter, G4 quarter, A4 quarter, B4 quarter, C5 quarter, D5 quarter.
- Staff 4: D4 quarter, E4 quarter, F#4 quarter, G4 quarter, A4 quarter, B4 quarter, C5 quarter, D5 quarter.