



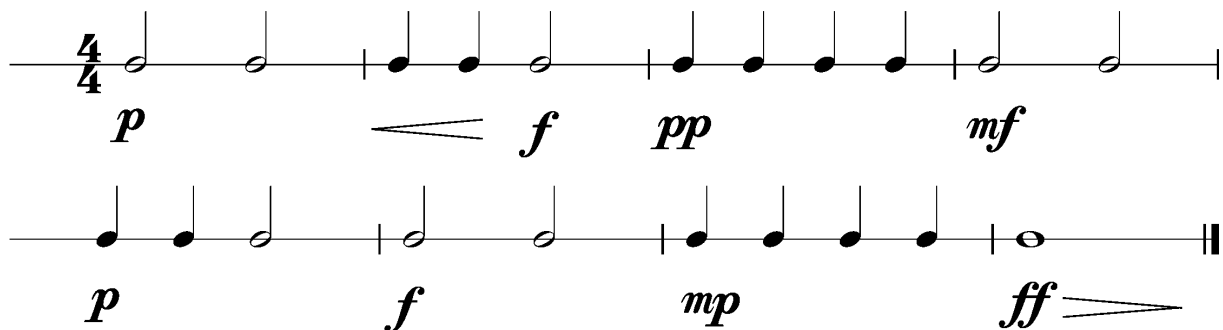
## Anforderungen:

- 3 selbstgewählte Spielstücke: 1 schnelles, 1 langsames, 1 selbstgewähltes oder eines im Ensemble mit anderen Prüflingen/KollegenInnen (max. 12Pkt)
- 3 Tonleitertrainings ab Vorlage (max. 6Pkt)
- Rhythmus klatschen mit  inkl. Pausen (max. 2Pkt)
- 1 Lied ab Blatt spielen mit  (max. 2Pkt)
- Dynamikspiel *ff f mf mp p pp cresc. decresc.* (max. 2Pkt)

Dauer des gesamten Vorspiels ca. 10 Minuten

**Nimm dieses Blatt zum Diplomvorspiel mit!**

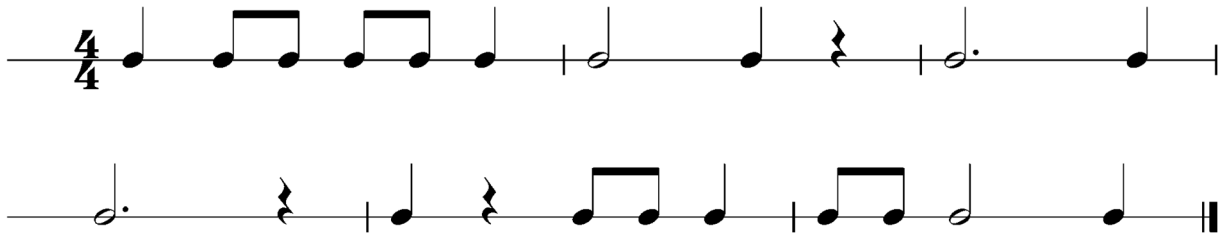
Dies ist ein Beispiel eines Dynamikchecks. Am Vorspieltag erhältst du einen ähnlichen Check (spielen, klatschen oder sprechen).



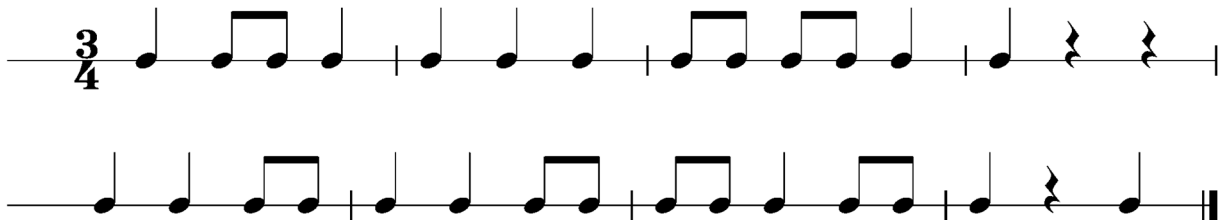
The image shows two musical staves in 4/4 time, illustrating a dynamics check exercise. The first staff contains four measures of music with the following dynamics: *p*, *f*, *pp*, and *mf*. The second staff contains four measures of music with the following dynamics: *p*, *f*, *mp*, and *ff*. The notation includes quarter notes, eighth notes, and a half note, with dynamic markings placed below the notes.

Dies sind zwei Beispiele eines Rhythmuschecks. Am Vorspieltag erhältst du einen ähnlichen Check (spielen, klatschen oder sprechen).

## Beispiel 1



## Beispiel 2



Die Tonleitertrainings 1 bis 3 kannst du üben, da du diese am Vorspieltag vorspielen musst.

## Tonleitertraining 1

Musical notation for Tonleitertraining 1, consisting of four staves of a C major scale in 4/4 time. The first staff shows the scale from C4 to C5. The second staff shows the scale from C4 to C5 with a repeat sign. The third staff shows the scale from C4 to C5 with a repeat sign. The fourth staff shows the scale from C4 to C5 with a repeat sign.

## Das Tonleitertraining 2

Musical notation for Das Tonleitertraining 2, consisting of four staves of a B-flat major scale in 4/4 time. The first staff shows the scale from B-flat4 to B-flat5. The second staff shows the scale from B-flat4 to B-flat5 with a repeat sign. The third staff shows the scale from B-flat4 to B-flat5 with a repeat sign. The fourth staff shows the scale from B-flat4 to B-flat5 with a repeat sign.

## Das Tonleitertraining 3

The image displays a musical score for a clarinet exercise titled 'Das Tonleitertraining 3'. It consists of four staves of music, each containing two measures. The first staff is in 4/4 time and features a treble clef with a key signature of one flat (B-flat). The notes in the first measure are G4, A4, Bb4, C5, D5, E5, F5, and G5. The second measure contains a descending scale: F5, E5, D5, C5, Bb4, A4, G4, and a whole note G4. The second, third, and fourth staves are identical to the first, each containing the same two-measure sequence of notes. The fourth staff concludes with a double bar line.