



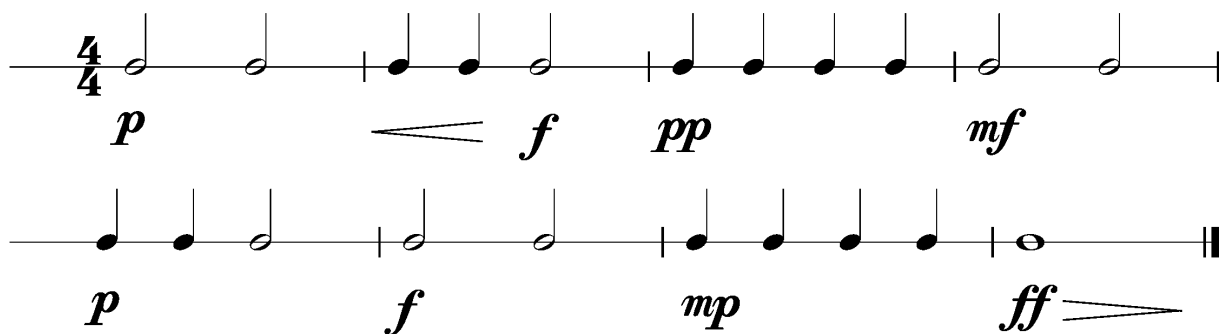
Anforderungen:

- 3 selbstgewählte Spielstücke: 1 schnelles, 1 langsames, 1 selbstgewähltes oder eines im Ensemble mit anderen Prüflingen/KollegenInnen (max. 12Pkt)
- 3 Tonleitertrainings ab Vorlage (max. 6Pkt)
- Rhythmus klatschen mit  inkl. Pausen (max. 2Pkt)
- 1 Lied ab Blatt spielen mit  (max. 2Pkt)
- Dynamikspiel *ff f mf mp p pp cresc. decresc.* (max. 2Pkt)

Dauer des gesamten Vorspiels ca. 10 Minuten

Nimm dieses Blatt zum Diplomvorspiel mit!

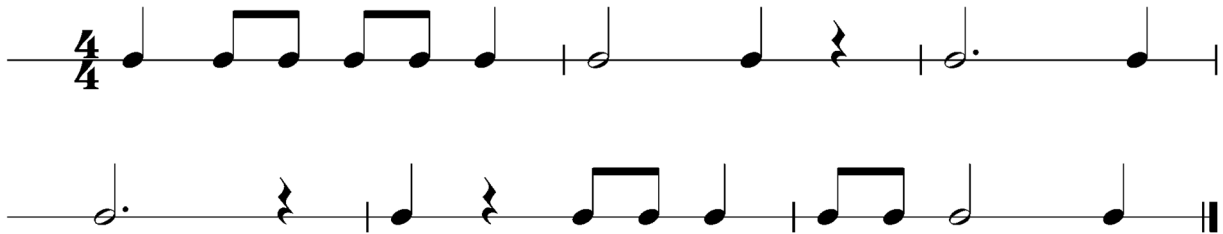
Dies ist ein Beispiel eines Dynamikchecks. Am Vorspieltag erhältst du einen ähnlichen Check (spielen, klatschen oder sprechen).



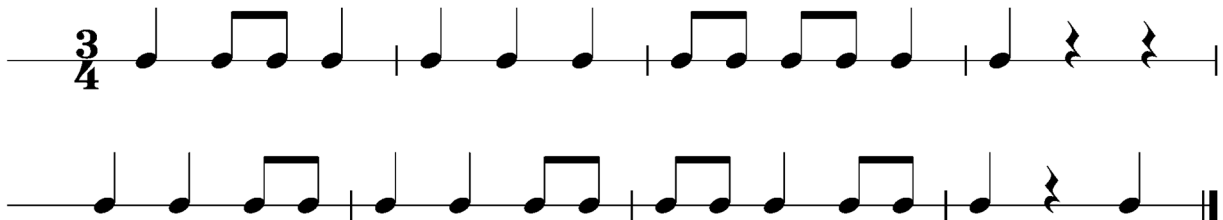
The image shows two staves of musical notation in 4/4 time, illustrating a dynamic check exercise. The first staff contains four measures: the first measure has a half note with dynamic *p*; the second measure has two quarter notes with dynamic *f*; the third measure has four eighth notes with dynamic *pp*; and the fourth measure has a half note with dynamic *mf*. The second staff contains four measures: the first measure has a half note with dynamic *p*; the second measure has a half note with dynamic *f*; the third measure has four eighth notes with dynamic *mp*; and the fourth measure has a half note with dynamic *ff*. The notation includes a 4/4 time signature, a treble clef, and a double bar line at the end of the second staff.

Dies sind zwei Beispiele eines Rhythmuschecks. Am Vorspieltag erhältst du einen ähnlichen Check (spielen, klatschen oder sprechen).

Beispiel 1



Beispiel 2



Die Tonleitertrainings 1 bis 3 kannst du üben, da du diese am Vorspieltag vorspielen musst.

Tonleitertraining 1

Musical notation for Tonleitertraining 1, consisting of four staves in bass clef, 4/4 time signature. The first staff shows a scale from G2 to G3. The second and third staves show the scale from F2 to F3. The fourth staff shows the scale from E2 to E3.

Das Tonleitertraining 2

Musical notation for Das Tonleitertraining 2, consisting of four staves in bass clef, 4/4 time signature, with one flat in the key signature. The first staff shows a scale from G2 to G3. The second and third staves show the scale from F2 to F3. The fourth staff shows the scale from E2 to E3.

Das Tonleitertraining 3

The image shows four staves of musical notation for bass clef, 4/4 time, key of D major. Each staff contains a sequence of eighth notes forming a scale: ascending (D4-E4-F4-G4-A4-B4-C5) and descending (C5-B4-A4-G4-F4-E4-D4). The first staff has a bar line after the second measure. The second staff has a bar line after the second measure. The third staff has a bar line after the second measure. The fourth staff has a bar line after the second measure and ends with a double bar line.