



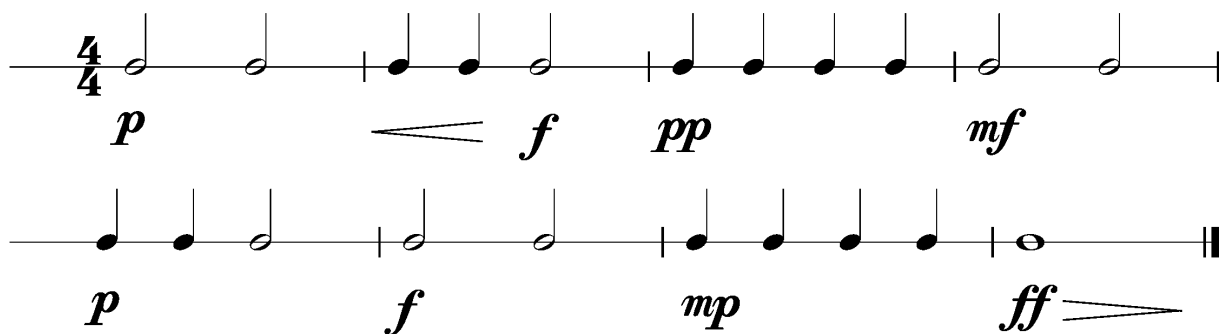
Anforderungen:

- 3 selbstgewählte Spielstücke: 1 schnelles, 1 langsames, 1 selbstgewähltes oder eines im Ensemble mit anderen Prüflingen/KollegenInnen (max. 12Pkt)
- 3 Tonleitertrainings ab Vorlage (max. 6Pkt)
- Rhythmus klatschen mit  inkl. Pausen (max. 2Pkt)
- 1 Lied ab Blatt spielen mit  (max. 2Pkt)
- Dynamikspiel *ff f mf mp p pp cresc. decresc.* (max. 2Pkt)

Dauer des gesamten Vorspiels ca. 10 Minuten

Nimm dieses Blatt zum Diplomvorspiel mit!

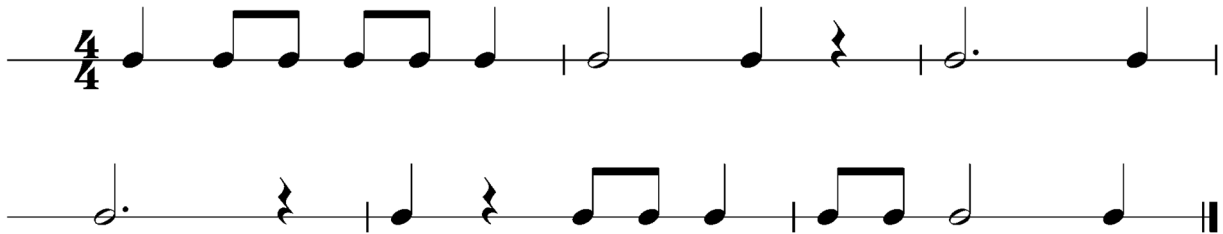
Dies ist ein Beispiel eines Dynamikchecks. Am Vorspieltag erhältst du einen ähnlichen Check (spielen, klatschen oder sprechen).



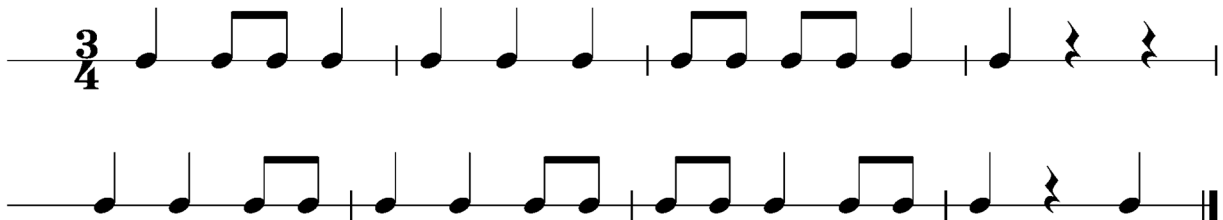
The image shows two staves of musical notation in 4/4 time, illustrating dynamic changes. The first staff contains four measures: the first measure has a piano (*p*) dynamic; the second measure has a forte (*f*) dynamic with a wedge-shaped crescendo hairpin; the third measure has a pianissimo (*pp*) dynamic; and the fourth measure has a mezzo-forte (*mf*) dynamic. The second staff contains four measures: the first measure has a piano (*p*) dynamic; the second measure has a forte (*f*) dynamic; the third measure has a mezzo-piano (*mp*) dynamic; and the fourth measure has a fortissimo (*ff*) dynamic with a wedge-shaped crescendo hairpin.

Dies sind zwei Beispiele eines Rhythmuschecks. Am Vorspieltag erhältst du einen ähnlichen Check (spielen, klatschen oder sprechen).

Beispiel 1



Beispiel 2



Die Tonleitertrainings 1 bis 3 kannst du üben, da du diese am Vorspieltag vorspielen musst.

Tonleitertraining 1



Four staves of musical notation for Tonleitertraining 1. The key signature is two flats (B-flat and E-flat) and the time signature is 4/4. The notation consists of eighth and quarter notes, with some slurs and a final double bar line.

Das Tonleitertraining 2



Four staves of musical notation for Das Tonleitertraining 2. The key signature is two flats (B-flat and E-flat) and the time signature is 4/4. The notation consists of eighth and quarter notes, with some slurs and a final double bar line.

Das Tonleitertraining 3

The image displays four staves of musical notation for a bass clef instrument in 4/4 time. The key signature has one flat (B-flat). The exercise consists of a descending scale starting on G2. The first staff shows the first two measures: G2-A2-B2-C3 (quarter notes), D3-E3-F3-G3 (quarter notes), A3-B3-C4 (quarter notes), and a whole note G3. The second staff shows the next two measures: D3-E3-F3-G3 (quarter notes), A3-B3-C4 (quarter notes), D4-E4-F4-G4 (quarter notes), and a whole note G4. The third staff shows the next two measures: A4-B4-C5 (quarter notes), D5-E5-F5-G5 (quarter notes), A5-B5-C6 (quarter notes), and a whole note G5. The fourth staff shows the final two measures: A5-B5-C6 (quarter notes), D6-E6-F6-G6 (quarter notes), A6-B6-C7 (quarter notes), and a whole note G6. The piece concludes with a double bar line.