




## Anforderungen:

- 3 Vortragsstücke, Total ca. 8 Minuten (max. 18Pkt)
- Chromatische Tonleiter (max. 2Pkt)
- 7 Tonleitertrainings ab Vorlage (max. 6Pkt)
- 3 Molltonleitern (äolisch) ab Vorlage (max. 2Pkt)
- Bluestonleiter (max. 2Pkt)
- Dynamikcheck (max. 2Pkt)
- Rhythmuscheck (max. 2Pkt)
- Ab Blattspiel mit  oder Improvisation mit Bluestonleiter (max. 2Pkt)

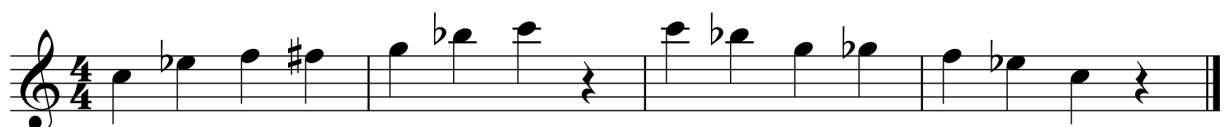
Dauer des gesamten Vorspiels ca. 20 Minuten

**Nimm dieses Blatt zum Test am 5. Mai 2018 mit!**

## Chromatische Tonleiter (auswendig)



## Bluestonleiter





## Tonleitertraining 1

## Tonleitertraining 2

## Molltonleiter 1



## Tonleitertraining 3

Musical notation for Tonleitertraining 3, consisting of four staves of music in G major, 4/4 time. The first staff shows the ascending and descending scale. The second and third staves show eighth-note and sixteenth-note patterns. The fourth staff shows a descending eighth-note pattern.

## Tonleitertraining 4

Musical notation for Tonleitertraining 4, consisting of two staves of music in G major, 4/4 time. The first staff shows the ascending and descending scale. The second staff shows eighth-note and sixteenth-note patterns.

## Tonleitertraining 5

Musical notation for Tonleitertraining 5, consisting of four staves of music in F major, 4/4 time. The first staff shows the ascending and descending scale. The second and third staves show eighth-note and sixteenth-note patterns. The fourth staff shows a descending eighth-note pattern.



## Molltonleiter 2



## Tonleitertraining 6



## Tonleitertraining 7



## Molltonleiter 3

