




Anforderungen:

- 3 Vortragsstücke, Total ca. 8 Minuten (max. 18Pkt)
- Chromatische Tonleiter (max. 2Pkt)
- 7 Tonleitertrainings ab Vorlage (max. 6Pkt)
- 3 Molltonleitern (äolisch) ab Vorlage (max. 2Pkt)
- Bluestonleiter (max. 2Pkt)
- Dynamikcheck (max. 2Pkt)
- Rhythmuscheck (max. 2Pkt)
- Ab Blattspiel mit  oder Improvisation mit Bluestonleiter (max. 2Pkt)

Dauer des gesamten Vorspiels ca. 20 Minuten

Nimm dieses Blatt zum Diplomvorspiel mit!

Chromatische Tonleiter

Tonleitertraining 1

5

9

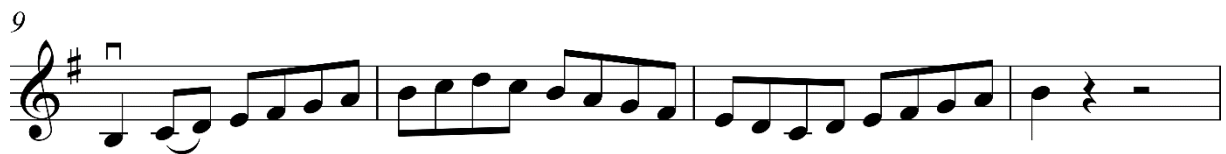
13



Bluestonleiter



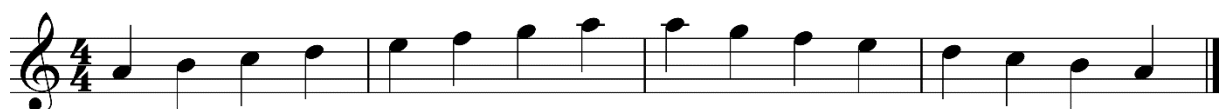
Tonleitertraining 2



Tonleitertraining 3



a-Molltonleiter





Tonleitertraining 4

Four staves of musical notation for Tonleitertraining 4. The key signature is three sharps (F#, C#, G#) and the time signature is 4/4. The first staff starts with a fermata over the first measure. The second and third staves are marked with a '5' at the beginning. The fourth staff is marked with a '13' at the beginning. The piece concludes with a double bar line.

Tonleitertraining 5

Four staves of musical notation for Tonleitertraining 5. The key signature is four sharps (F#, C#, G#, D#) and the time signature is 4/4. The first staff starts with a fermata over the first measure. The second and third staves are marked with a '5' at the beginning. The fourth staff is marked with a '13' at the beginning. The piece concludes with a double bar line.

e-Molltonleiter

One staff of musical notation for the e-Molltonleiter (E minor scale). The key signature has one flat (Bb) and the time signature is 4/4. The piece concludes with a double bar line.



Tonleitertraining 6

Musical notation for Tonleitertraining 6, measures 1-13. The piece is in 4/4 time with a key signature of one flat (B-flat). It consists of four staves. The first staff starts with a fermata on the first measure. The second staff begins at measure 5. The third staff begins at measure 9. The fourth staff begins at measure 13 and ends with a double bar line.

Tonleitertraining 7

Musical notation for Tonleitertraining 7, measures 1-13. The piece is in 4/4 time with a key signature of two flats (B-flat and E-flat). It consists of four staves. The first staff starts with a fermata on the first measure. The second staff begins at measure 5. The third staff begins at measure 9. The fourth staff begins at measure 13 and ends with a double bar line.

h-Molltonleiter

Musical notation for the h-Molltonleiter (A-flat major scale). It is written in 4/4 time with a key signature of two flats (B-flat and E-flat). The scale is presented as a single line of music.