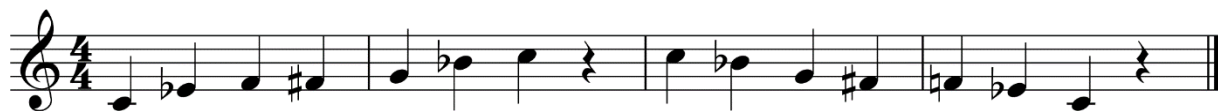




Bluestonleiter



Tonleitertraining 2



Tonleitertraining 3



a-Molltonleiter





Tonleitertraining 4



Tonleitertraining 5



e-Molltonleiter





Tonleitertraining 6

Musical notation for Tonleitertraining 6, measures 1-13. The piece is in G minor (one flat) and 4/4 time. It consists of four staves. The first three staves are marked with measure numbers 1, 5, and 9. The fourth staff is marked with measure number 13. The notation shows a descending scale pattern: G4, F4, E4, D4, C4, B3, A3, G3, F3, E3, D3, C3, B2, A2, G2.

Tonleitertraining 7

Musical notation for Tonleitertraining 7, measures 1-13. The piece is in G minor (one flat) and 4/4 time. It consists of four staves. The first three staves are marked with measure numbers 1, 5, and 9. The fourth staff is marked with measure number 13. The notation shows a descending scale pattern: G4, F4, E4, D4, C4, B3, A3, G3, F3, E3, D3, C3, B2, A2, G2.

h-Molltonleiter

Musical notation for h-Molltonleiter. The piece is in A minor (no sharps or flats) and 4/4 time. It consists of a single staff. The notation shows a descending scale pattern: A4, G4, F4, E4, D4, C4, B3, A3, G3, F3, E3, D3, C3, B2, A2.