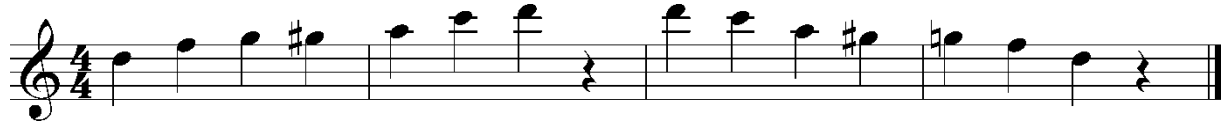


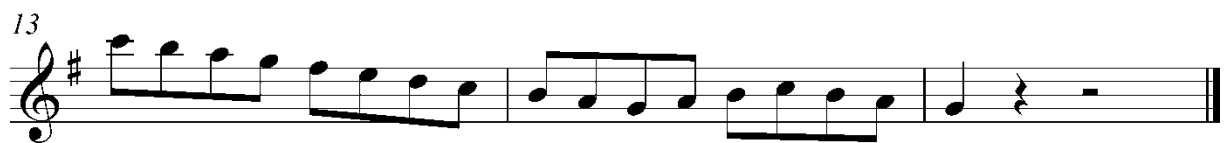




Bluestonleiter



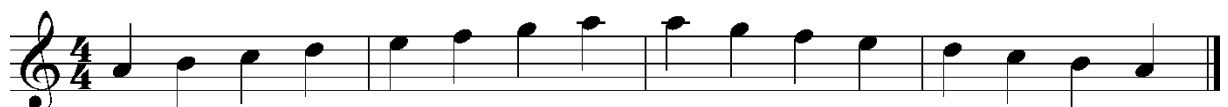
Tonleitertraining 2



Tonleitertraining 3



Molltonleiter 1





Tonleitertraining 4

Four staves of musical notation for Tonleitertraining 4. The key signature is two sharps (F# and C#) and the time signature is 4/4. The first staff starts with a quarter note G4. The second staff starts with a quarter note A4. The third staff starts with a quarter note B4. The fourth staff starts with a quarter note C5. Each staff contains a sequence of eighth notes and quarter notes, ending with a quarter rest.

Tonleitertraining 5

Four staves of musical notation for Tonleitertraining 5. The key signature is one flat (Bb) and the time signature is 4/4. The first staff starts with a quarter note G3. The second staff starts with a quarter note A3. The third staff starts with a quarter note B3. The fourth staff starts with a quarter note C4. Each staff contains a sequence of eighth notes and quarter notes, ending with a quarter rest.

Molltonleiter 2

One staff of musical notation for Molltonleiter 2. The key signature is one sharp (F#) and the time signature is 4/4. The staff contains a sequence of eighth notes and quarter notes, ending with a quarter rest.



Tonleitertraining 6

Musical notation for Tonleitertraining 6, consisting of four staves. The first staff starts at measure 1. The second staff starts at measure 5. The third staff starts at measure 9. The fourth staff starts at measure 13. The key signature has two flats (Bb and Eb) and the time signature is 4/4. The melody consists of eighth and sixteenth notes, ending with a quarter rest.

Tonleitertraining 7

Musical notation for Tonleitertraining 7, consisting of four staves. The first staff starts at measure 1. The second staff starts at measure 5. The third staff starts at measure 9. The fourth staff starts at measure 13. The key signature has three flats (Bb, Eb, and Ab) and the time signature is 4/4. The melody consists of eighth and sixteenth notes, ending with a quarter rest.

Molltonleiter 3

Musical notation for Molltonleiter 3, consisting of one staff. The key signature has two flats (Bb and Eb) and the time signature is 4/4. The melody consists of quarter notes, ending with a double bar line.