





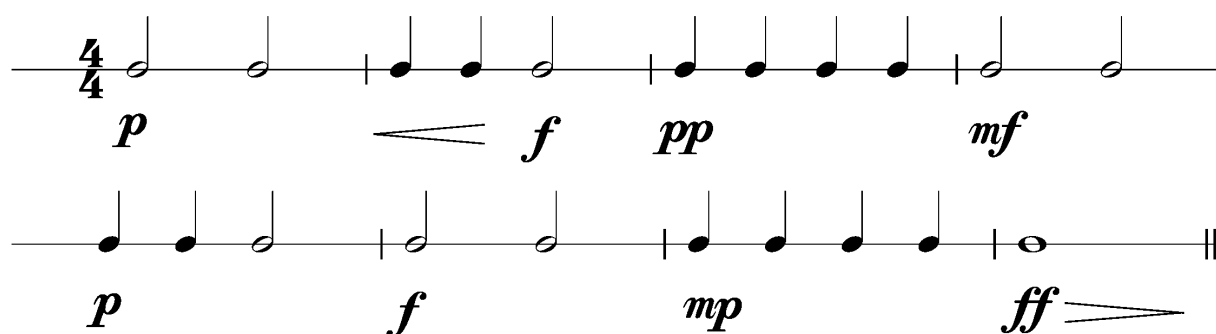
Anforderungen:

- 3 selbstgewählte Spielstücke: 1 schnelles, 1 langsames, 1 selbstgewähltes oder eines im Ensemble mit anderen Prüflingen/KollegenInnen (max. 6Pkt)
- 3 Tonleitertrainings ab Vorlage (max. 6Pkt)
- Rhythmus klatschen mit  inkl. Pausen (max. 2Pkt)
- 1 Lied ab Blatt spielen mit  (max. 2Pkt)
- Dynamikspiel *ff f mf mp p pp cresc. decresc.* (max. 2Pkt)

Dauer des gesamten Vorspiels ca. 10 Minuten

Nimm dieses Blatt zum Test am 5. Mai 2018 mit!

Dies ist ein Beispiel eines Dynamikchecks. Am Vorspieltag erhältst du einen ähnlichen Check (spielen, klatschen oder sprechen).

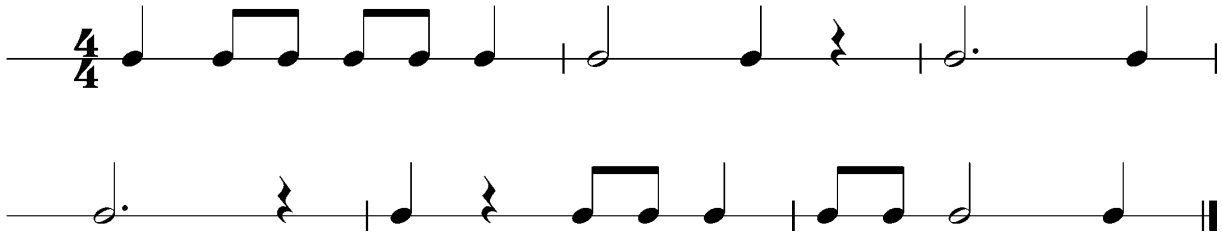


The image shows two staves of musical notation in 4/4 time, illustrating dynamic markings. The first staff contains four measures: the first measure has a half note with dynamic *p*; the second measure has two quarter notes with dynamic *f* and a wedge-shaped decrescendo symbol above them; the third measure has four quarter notes with dynamic *pp*; the fourth measure has a half note with dynamic *mf*. The second staff contains four measures: the first measure has a half note with dynamic *p*; the second measure has a half note with dynamic *f*; the third measure has four quarter notes with dynamic *mp*; the fourth measure has a half note with dynamic *ff* and a wedge-shaped crescendo symbol above it.

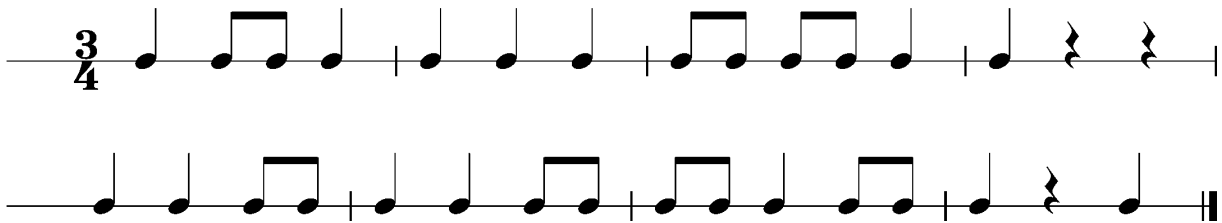


Dies sind zwei Beispiele eines Rhythmuschecks. Am Vorspieltag erhältst du einen ähnlichen Check (spielen, klatschen oder sprechen).

Beispiel 1



Beispiel 2





Die Tonleitertrainings 1 bis 3 kannst du üben, da du diese am Vorspieltag vorspielen musst.

Tonleitertraining 1

Musical notation for Tonleitertraining 1, consisting of four staves of music in 4/4 time. The first staff shows an ascending scale from C4 to G4. The second staff shows a descending scale from G4 to C4. The third staff shows an ascending scale from C4 to G4 with a different fingering pattern. The fourth staff shows a descending scale from G4 to C4 with a different fingering pattern.

Das Tonleitertraining 2

Musical notation for Das Tonleitertraining 2, consisting of four staves of music in 4/4 time with a key signature of one sharp (F#). The first staff shows an ascending scale from C4 to G4. The second staff shows a descending scale from G4 to C4. The third staff shows an ascending scale from C4 to G4 with a different fingering pattern. The fourth staff shows a descending scale from G4 to C4 with a different fingering pattern.



Das Tonleitertraining 3

