



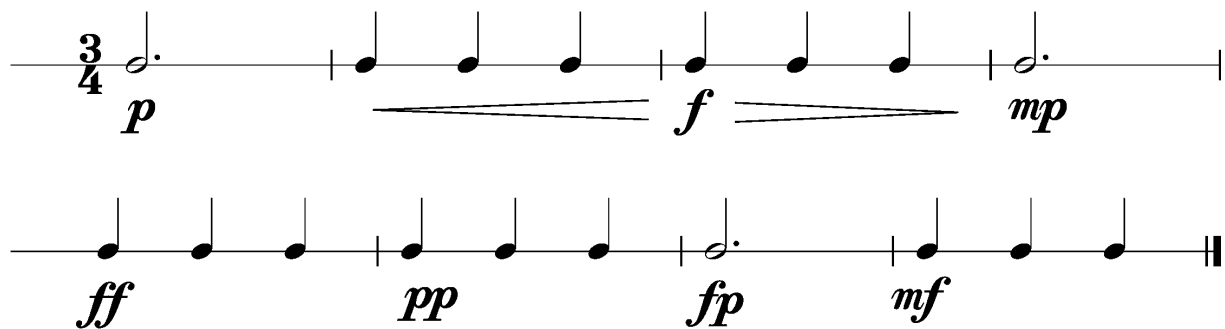
## Anforderungen:

- 3 selbstgewählte Spielstücke: 1 schnelles, 1 langsames, 1 auswendiges (ca. 1 Min) oder zu 2./3. im Ensemble (max. 12Pkt)
- 5 Tonleitertrainings ab Vorlage (max. 10Pkt)
- 2 Lieder/Stücke ab Blatt spielen im  $4/4$   $3/4$   $2/4$  und mit  (max. 2Pkt)
- Rhythmus klatschen mit  (max. 2Pkt)
- Dynamikspiel *ff f mf mp p pp sfz fp cresc. decresc.* (max. 2Pkt)

Dauer des gesamten Vorspiels ca. 15 Minuten

**Nimm dieses Blatt zum Diplomvorspiel mit!**

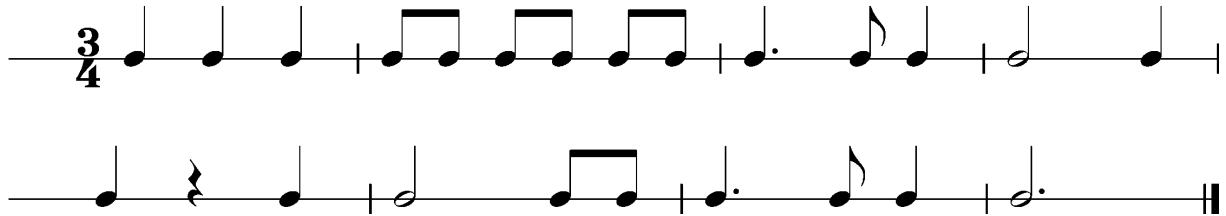
Dies ist ein Beispiel eines Dynamikchecks. Am Vorspieltag erhältst du einen ähnlichen (diesen kannst du spielen, klatschen oder sprechen).



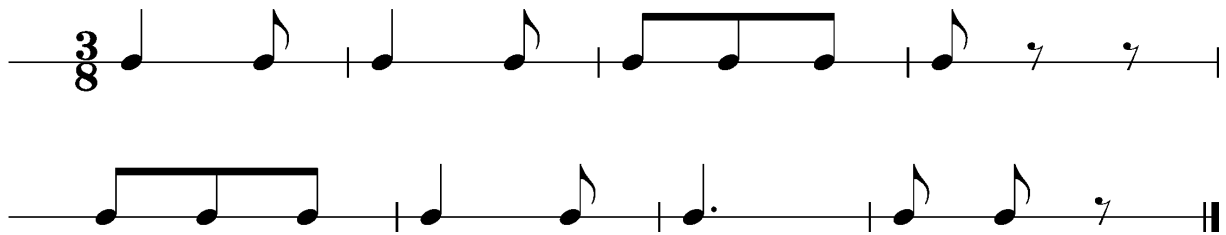
The image shows two staves of musical notation in 3/4 time. The first staff begins with a half note followed by a quarter note, then a quarter note, a quarter note, a quarter note, a quarter note, a quarter note, and a quarter note. Dynamics are indicated as *p*, *f*, and *mp*. The second staff shows a quarter note, a quarter note, a quarter note, a quarter note, a quarter note, a quarter note, a quarter note, and a quarter note. Dynamics are indicated as *ff*, *pp*, *fp*, and *mf*.

Dies sind zwei Beispiele eines Rhythmuschecks. Am Vorspieltag erhältst du einen ähnlichen Check (spielen, klatschen oder sprechen).

## Beispiel 1



## Beispiel 2



Das Tonleitertraining 1 bis 5 kannst du üben, da du diese am praktischen Vorspieltag vorspielen musst.

## Tonleitertraining 1



Tonleitertraining 2



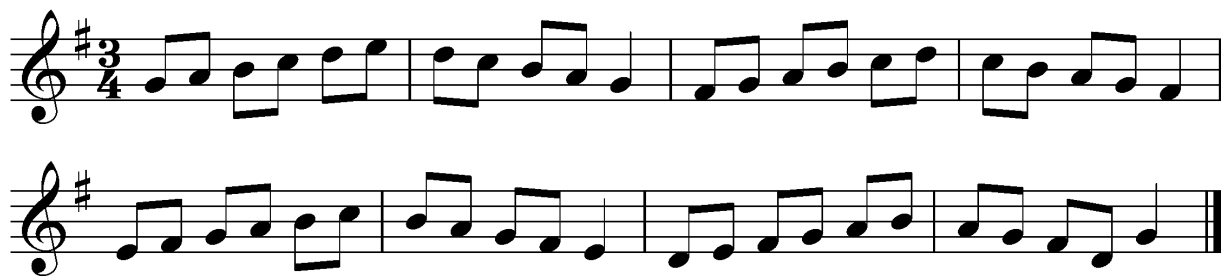
Two staves of musical notation for Tonleitertraining 2. The first staff is in G major (one flat) and 3/4 time, showing an ascending and descending scale. The second staff is in G minor (two flats) and 3/4 time, showing an ascending and descending scale.

Tonleitertraining 3



Two staves of musical notation for Tonleitertraining 3. The first staff is in F major (two flats) and 3/4 time, showing an ascending and descending scale. The second staff is in F minor (three flats) and 3/4 time, showing an ascending and descending scale.

Tonleitertraining 4



Two staves of musical notation for Tonleitertraining 4. The first staff is in D major (two sharps) and 3/4 time, showing an ascending and descending scale. The second staff is in D minor (one sharp, one flat) and 3/4 time, showing an ascending and descending scale.

Tonleitertraining 5



Two staves of musical notation for Tonleitertraining 5. The first staff is in A major (three sharps) and 3/4 time, showing an ascending and descending scale. The second staff is in A minor (no sharps or flats) and 3/4 time, showing an ascending and descending scale.