
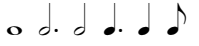




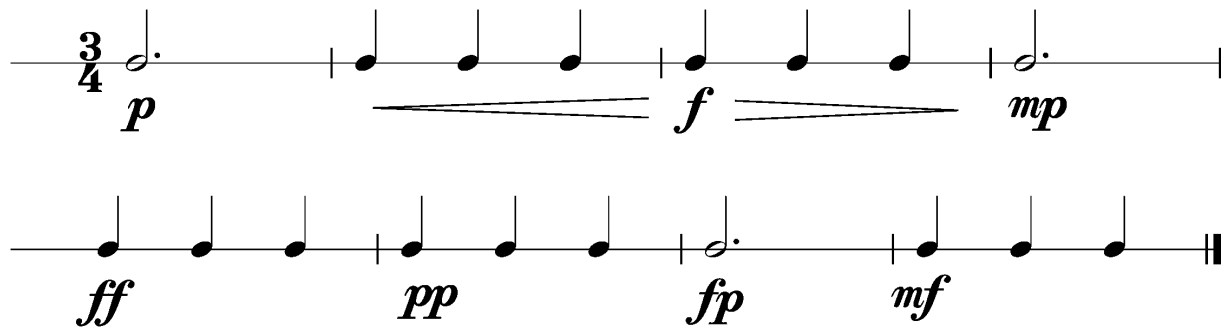
Anforderungen:

- 3 selbstgewählte Spielstücke: 1 schnelles, 1 langsames, 1 auswendiges (ca. 1 Min) oder zu 2./3. im Ensemble (max. 12Pkt)
- 5 Tonleitertrainings ab Vorlage (max. 10Pkt)
- 2 Lieder/Stücke ab Blatt spielen im  $4/4$   $3/4$   $2/4$  und mit  (max. 2Pkt)
- Rhythmus klatschen mit  (max. 2Pkt)
- Dynamikspiel *ff f mf mp p pp sfz fp cresc. decresc.* (max. 2Pkt)

Dauer des gesamten Vorspiels ca. 15 Minuten

**Nimm dieses Blatt zum Diplomvorspiel mit!**

Dies ist ein Beispiel eines Dynamikchecks. Am Vorspieltag erhältst du einen ähnlichen (diesen kannst du spielen, klatschen oder sprechen).

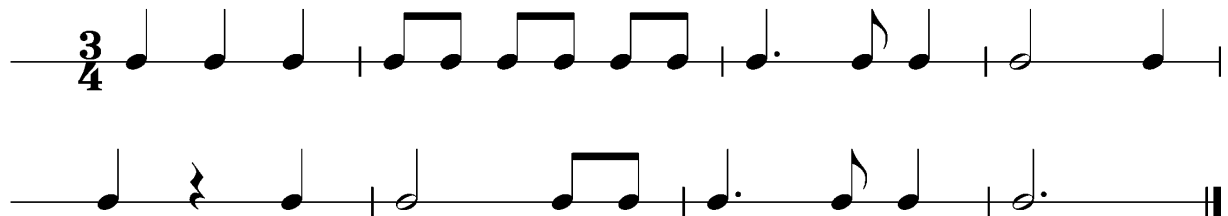


The image shows two staves of musical notation in 3/4 time. The first staff begins with a 3/4 time signature and a half note on the first line, marked with a piano (*p*) dynamic. This is followed by a dotted quarter note on the first line, marked with a forte (*f*) dynamic. The second staff starts with a quarter note on the first line, marked with fortissimo (*ff*), followed by a dotted quarter note on the first line, marked with pianissimo (*pp*), a quarter note on the first line, marked with fortissimo (*fp*), and a quarter note on the first line, marked with mezzo-forte (*mf*). The piece ends with a double bar line.

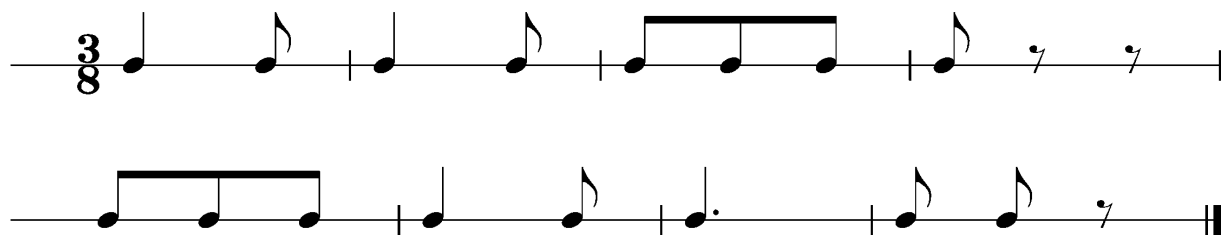


Dies sind zwei Beispiele eines Rhythmuschecks. Am Vorspieltag erhältst du einen ähnlichen Check (spielen, klatschen oder sprechen).

Beispiel 1



Beispiel 2



Das Tonleitertraining 1 bis 5 kannst du üben, da du diese am praktischen Vorspieltag vorspielen musst.

Tonleitertraining 1





Tonleitertraining 2

Musical notation for Tonleitertraining 2, consisting of two staves. The first staff contains four measures of music, and the second staff contains four measures, ending with a double bar line. The key signature has one sharp (F#) and the time signature is 3/4.

Tonleitertraining 3

Musical notation for Tonleitertraining 3, consisting of two staves. The first staff contains four measures of music, and the second staff contains four measures, ending with a double bar line. The key signature has two sharps (F# and C#) and the time signature is 3/4.

Tonleitertraining 4

Musical notation for Tonleitertraining 4, consisting of two staves. The first staff contains four measures of music, and the second staff contains four measures, ending with a double bar line. The key signature has three sharps (F#, C#, and G#) and the time signature is 3/4.

Tonleitertraining 5

Musical notation for Tonleitertraining 5, consisting of two staves. The first staff contains four measures of music, and the second staff contains four measures, ending with a double bar line. The key signature has no sharps or flats and the time signature is 3/4.