
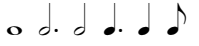




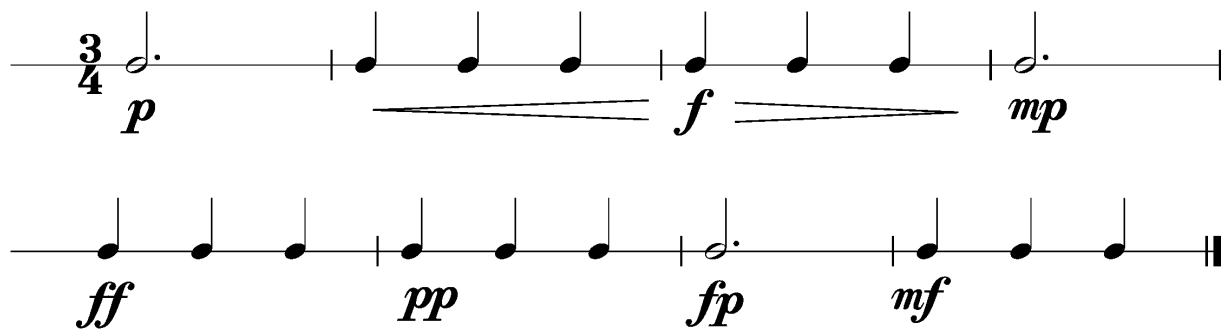
Anforderungen:

- 3 selbstgewählte Spielstücke: 1 schnelles, 1 langsames, 1 auswendiges (ca. 1 Min) oder zu 2./3. im Ensemble (max. 12Pkt)
- 5 Tonleitertrainings ab Vorlage (max. 10Pkt)
- 2 Lieder/Stücke ab Blatt spielen im $4/4$ $3/4$ $2/4$ und mit  (max. 2Pkt)
- Rhythmus klatschen mit  (max. 2Pkt)
- Dynamikspiel *ff f mf mp p pp sfz fp cresc. decresc.* (max. 2Pkt)

Dauer des gesamten Vorspiels ca. 15 Minuten

Nimm dieses Blatt zum Diplomvorspiel mit!

Dies ist ein Beispiel eines Dynamikchecks. Am Vorspieltag erhältst du einen ähnlichen (diesen kannst du spielen, klatschen oder sprechen).

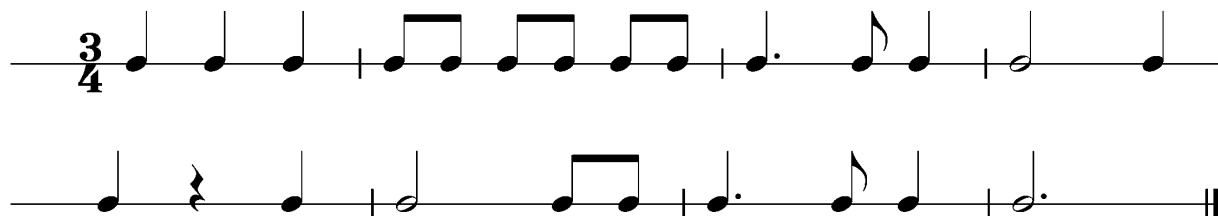


The image shows two staves of musical notation in 3/4 time. The first staff begins with a 3/4 time signature and a half note on the first line, marked with a piano (*p*) dynamic. This is followed by a quarter note on the second line, a quarter note on the third line, a quarter note on the fourth line, a quarter note on the fifth line, and a half note on the first line, marked with a mezzo-piano (*mp*) dynamic. A crescendo hairpin connects the first quarter note to the *f* dynamic, and a decrescendo hairpin connects the *f* dynamic to the *mp* dynamic. The second staff consists of eight quarter notes: the first is on the second line (*ff*), the second on the second space (*pp*), the third on the second line (*fp*), and the fourth on the second space (*mf*). The remaining four quarter notes are on the second line, second space, second line, and second space respectively, with no dynamic markings. The piece ends with a double bar line.

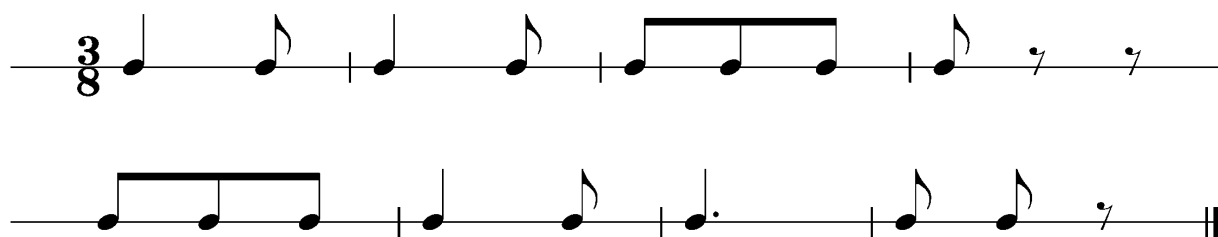


Dies sind zwei Beispiele eines Rhythmuschecks. Am Vorspieltag erhältst du einen ähnlichen Check (spielen, klatschen oder sprechen).

Beispiel 1



Beispiel 2



Das Tonleitertraining 1 bis 5 kannst du üben, da du diese am praktischen Vorspieltag vorspielen musst.

Tonleitertraining 1





Tonleitertraining 2

Musical notation for Tonleitertraining 2. It consists of two staves. The top staff is in G minor (one flat) and 3/4 time, showing an ascending and then descending scale. The bottom staff continues the descending scale and ends with a whole note G.

Tonleitertraining 3

Musical notation for Tonleitertraining 3. It consists of two staves. The top staff is in G major (one sharp) and 3/4 time, showing an ascending and then descending scale. The bottom staff continues the descending scale and ends with a whole note G.

Tonleitertraining 4

Musical notation for Tonleitertraining 4. It consists of two staves. The top staff is in D major (two sharps) and 3/4 time, showing an ascending and then descending scale. The bottom staff continues the descending scale and ends with a whole note D.

Tonleitertraining 5

Musical notation for Tonleitertraining 5. It consists of two staves. The top staff is in D minor (two sharps) and 3/4 time, showing an ascending and then descending scale. The bottom staff continues the descending scale and ends with a whole note D.