
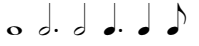




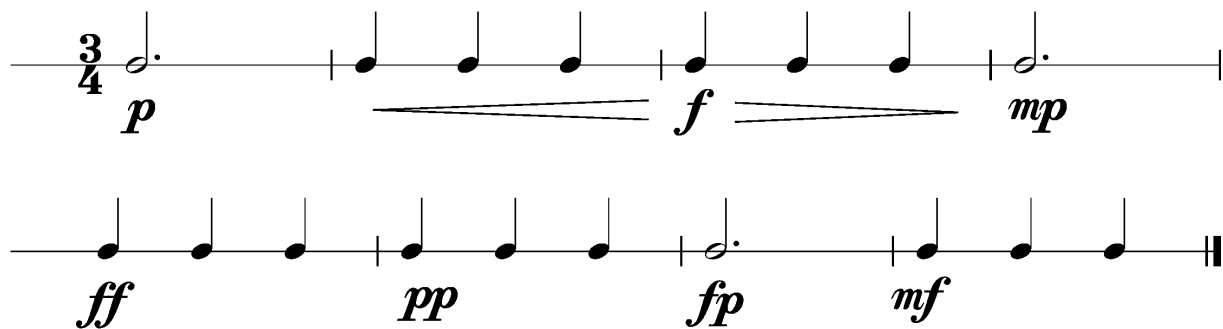
Anforderungen:

- 3 selbstgewählte Spielstücke: 1 schnelles, 1 langsames, 1 auswendiges (ca. 1 Min) oder zu 2./3. im Ensemble (max. 12Pkt)
- 5 Tonleitertrainings ab Vorlage (max. 10Pkt)
- 2 Lieder/Stücke ab Blatt spielen im  $4/4$   $3/4$   $2/4$  und mit  (max. 2Pkt)
- Rhythmus klatschen mit  (max. 2Pkt)
- Dynamikspiel *ff f mf mp p pp sfz fp cresc. decresc.* (max. 2Pkt)

Dauer des gesamten Vorspiels ca. 15 Minuten

**Nimm dieses Blatt zum Diplomvorspiel mit!**

Dies ist ein Beispiel eines Dynamikchecks. Am Vorspieltag erhältst du einen ähnlichen (diesen kannst du spielen, klatschen oder sprechen).

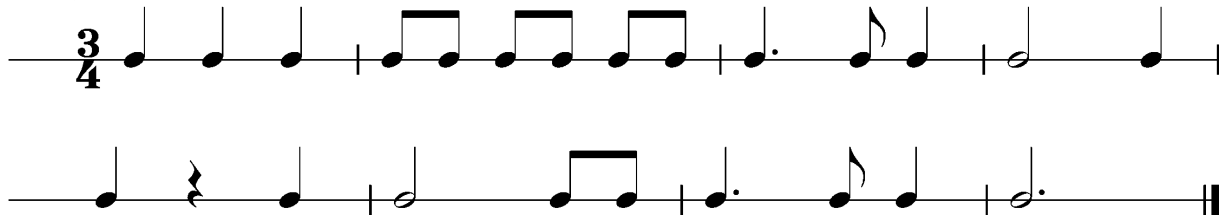


The image shows two staves of musical notation in 3/4 time. The first staff begins with a half note on the first line (G4) marked *p*. This is followed by three quarter notes on the second line (A4), marked *f*. The final note of the first staff is a half note on the first line (G4) marked *mp*. The second staff consists of four quarter notes: the first on the first line (G4) marked *ff*, the second on the second line (A4) marked *pp*, the third on the first line (G4) marked *fp*, and the fourth on the second line (A4) marked *mf*. The piece ends with a double bar line.

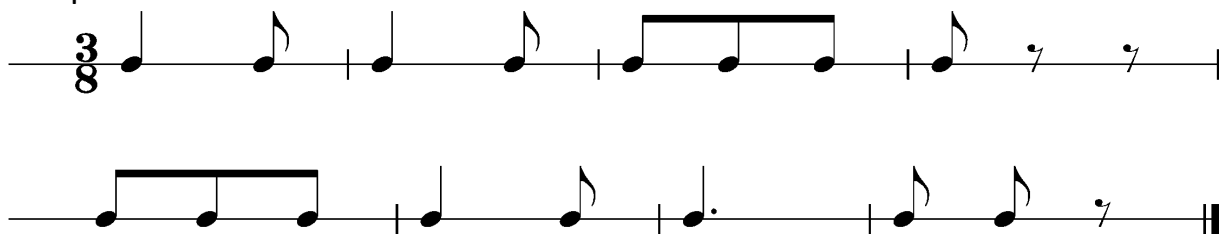


Dies sind zwei Beispiele eines Rhythmuschecks. Am Vorspieltag erhältst du einen ähnlichen Check (spielen, klatschen oder sprechen).

Beispiel 1



Beispiel 2



Das Tonleitertraining 1 bis 5 kannst du üben, da du diese am praktischen Vorspieltag vorspielen musst.

Tonleitertraining 1





Tonleitertraining 2

Two systems of piano music for Tonleitertraining 2. The first system consists of two staves (treble and bass clef) in 4/4 time with a key signature of one sharp (F#). The treble staff contains an ascending and descending scale with fingerings 1, 3, 1, 5 and 5, 1, 3. The bass staff contains an ascending and descending scale with fingerings 1, 3, 1, 5 and 5, 1, 3. The second system also consists of two staves in the same key and time signature. The treble staff contains an ascending and descending scale with fingerings 1, 3, 2, 4, 3, 5, 2, 4. The bass staff contains an ascending and descending scale with fingerings 5, 3, 4, 2, 3, 1, 4, 2.

Tonleitertraining 3

Two systems of piano music for Tonleitertraining 3. The first system consists of two staves (treble and bass clef) in 4/4 time with a key signature of two sharps (F# and C#). The treble staff contains an ascending and descending scale with fingerings 1, 3, 1, 5 and 5, 1, 3. The bass staff contains an ascending and descending scale with fingerings 1, 3, 1, 5 and 5, 1, 3. The second system also consists of two staves in the same key and time signature. The treble staff contains an ascending and descending scale with fingerings 1, 3. The bass staff contains an ascending and descending scale with fingerings 5, 3, 4, 2, 3, 1, 4, 2.



Tonleitertraining 4

Musical score for Tonleitertraining 4 in B-flat major, 4/4 time. The score consists of two systems of piano accompaniment. The first system has two measures. The second system has two measures. Fingerings are indicated by numbers 1-5 above or below notes.

Tonleitertraining 5

Musical score for Tonleitertraining 5 in D major, 4/4 time. The score consists of two systems of piano accompaniment. The first system has two measures. The second system has two measures. Fingerings are indicated by numbers 1-5 above or below notes.