
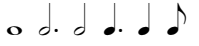




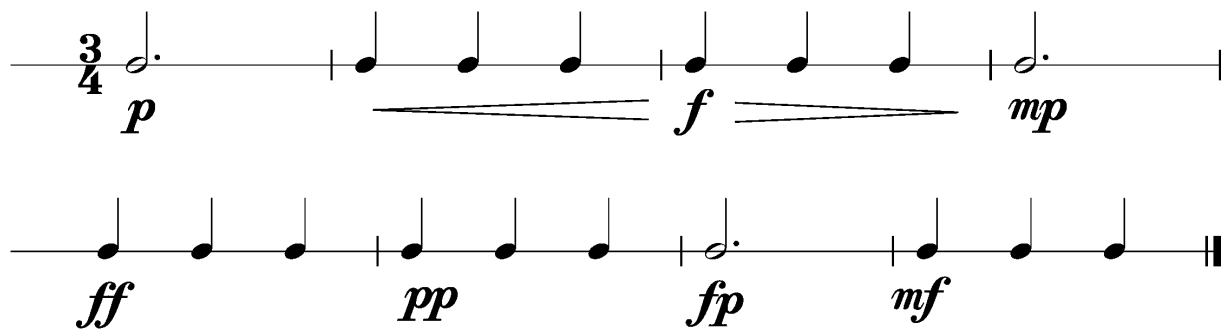
Anforderungen:

- 3 selbstgewählte Spielstücke: 1 schnelles, 1 langsames, 1 auswendiges (ca. 1 Min) oder zu 2./3. im Ensemble (max. 12Pkt)
- 5 Tonleitertrainings ab Vorlage (max. 10Pkt)
- 2 Lieder/Stücke ab Blatt spielen im $4/4$ $3/4$ $2/4$ und mit  (max. 2Pkt)
- Rhythmus klatschen mit  (max. 2Pkt)
- Dynamikspiel *ff f mf mp p pp sfz fp cresc. decresc.* (max. 2Pkt)

Dauer des gesamten Vorspiels ca. 15 Minuten

Nimm dieses Blatt zum Diplomvorspiel mit!

Dies ist ein Beispiel eines Dynamikchecks. Am Vorspieltag erhältst du einen ähnlichen (diesen kannst du spielen, klatschen oder sprechen).

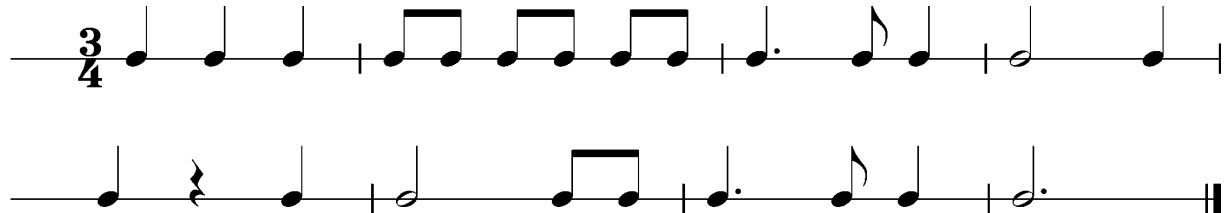


The image shows two staves of musical notation in 3/4 time. The first staff begins with a 3/4 time signature and a half note on a middle line, marked with a piano (*p*) dynamic. This is followed by a quarter note on a middle line, then a quarter note on a middle line, then a quarter note on a middle line, then a quarter note on a middle line, and finally a quarter note on a middle line, marked with a mezzo-piano (*mp*) dynamic. A double bar line separates the two staves. The second staff begins with a quarter note on a middle line, marked with a fortissimo (*ff*) dynamic. This is followed by a quarter note on a middle line, marked with a pianissimo (*pp*) dynamic. This is followed by a quarter note on a middle line, marked with a fortissimo-piano (*fp*) dynamic. This is followed by a quarter note on a middle line, marked with a mezzo-forte (*mf*) dynamic. The piece ends with a double bar line.

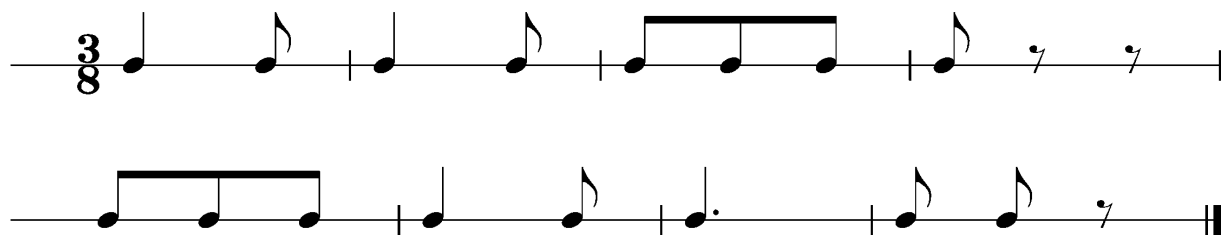


Dies sind zwei Beispiele eines Rhythmuschecks. Am Vorspieltag erhältst du einen ähnlichen Check (spielen, klatschen oder sprechen).

Beispiel 1

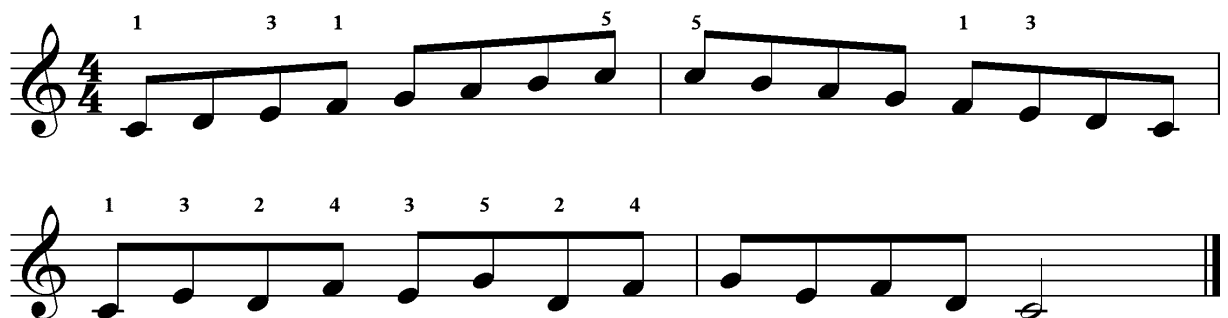


Beispiel 2



Das Tonleitertraining 1 bis 5 kannst du üben, da du diese am praktischen Vorspieltag vorspielen musst.

Tonleitertraining 1





Tonleitertraining 2

Two staves of music in 4/4 time, key of B-flat major. The first staff contains two measures of an ascending and descending scale with fingerings 1, 1, 4, 4, 4, 4. The second staff contains two measures of a more complex scale with fingerings 1, 3, 2, 4, 3, 5, 2, 4.

Tonleitertraining 3

Two staves of music in 4/4 time, key of D major. The first staff contains two measures of an ascending and descending scale with fingerings 1, 3, 1, 5, 5, 1, 3. The second staff contains two measures of a more complex scale with fingerings 1, 3, 2, 4, 3, 5, 2, 4.

Tonleitertraining 4

Two staves of music in 4/4 time, key of C major. The first staff is in bass clef and contains two measures of an ascending and descending scale. The second staff is in bass clef and contains two measures of a more complex scale.

Tonleitertraining 5

Two staves of music in 4/4 time, key of C major. The first staff contains four measures of chords: C, F, Dm, G. The second staff contains four measures of chords: Am, G7, C, C.