
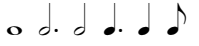




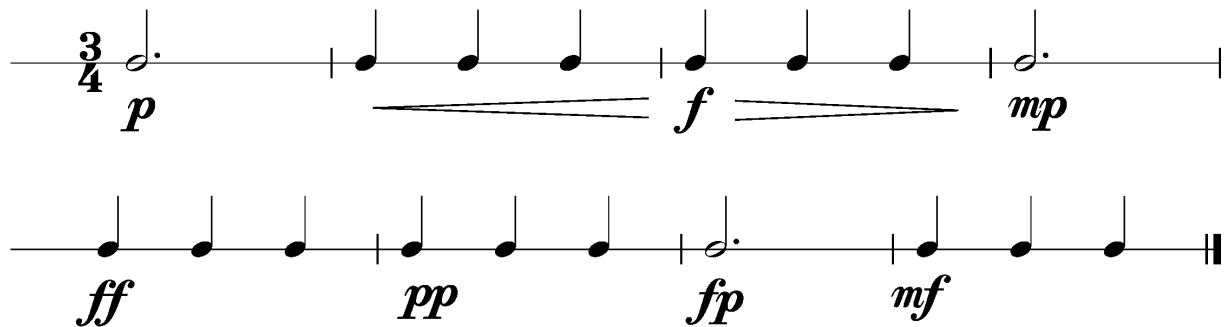
Anforderungen:

- 3 selbstgewählte Spielstücke: 1 schnelles, 1 langsames, 1 auswendiges (ca. 1 Min) oder zu 2./3. im Ensemble (max. 12Pkt)
- 5 Tonleitertrainings ab Vorlage (max. 10Pkt)
- 2 Lieder/Stücke ab Blatt spielen im  $4/4$   $3/4$   $2/4$  und mit  (max. 2Pkt)
- Rhythmus klatschen mit  (max. 2Pkt)
- Dynamikspiel *ff f mf mp p pp sfz fp cresc. decresc.* (max. 2Pkt)

Dauer des gesamten Vorspiels ca. 15 Minuten

**Nimm dieses Blatt zum Diplomvorspiel mit!**

Dies ist ein Beispiel eines Dynamikchecks. Am Vorspieltag erhältst du einen ähnlichen (diesen kannst du spielen, klatschen oder sprechen).

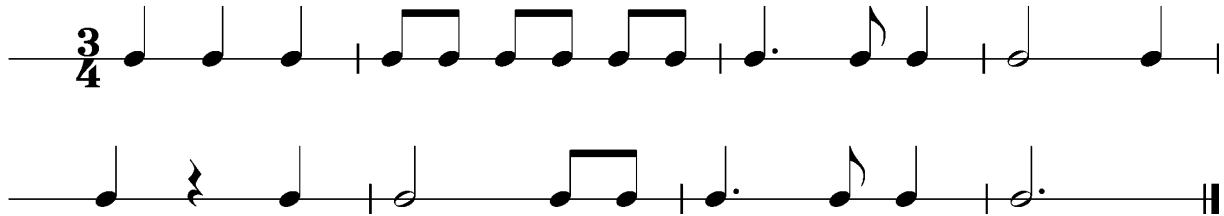


The image shows two staves of musical notation in 3/4 time. The first staff begins with a 3/4 time signature and a dynamic marking of *p*. It contains a sequence of notes: a dotted quarter note, followed by three quarter notes, then two more quarter notes, and finally a dotted quarter note. A dynamic marking of *f* is placed under the second and third quarter notes, and a dynamic marking of *mp* is placed under the final dotted quarter note. The second staff contains a sequence of notes: three quarter notes, two quarter notes, a dotted quarter note, and three quarter notes. Dynamic markings are placed below the notes: *ff* under the first quarter note, *pp* under the second quarter note, *fp* under the dotted quarter note, and *mf* under the first of the final three quarter notes. The piece ends with a double bar line.

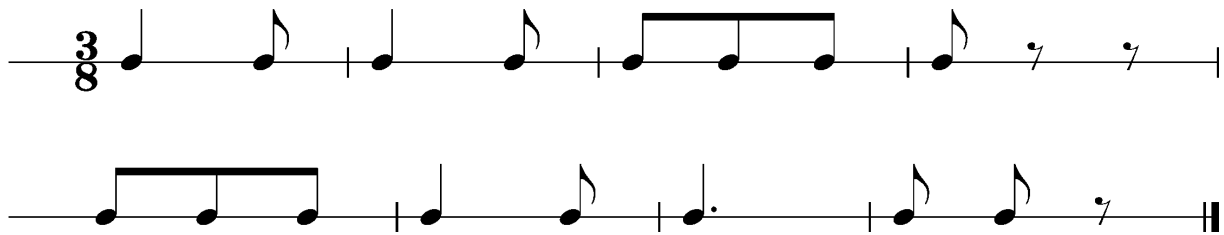


Dies sind zwei Beispiele eines Rhythmuschecks. Am Vorspieltag erhältst du einen ähnlichen Check (spielen, klatschen oder sprechen).

Beispiel 1

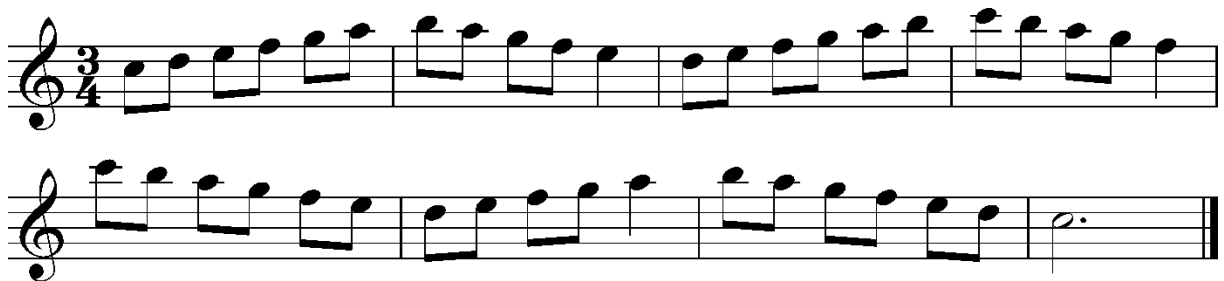


Beispiel 2



Das Tonleitertraining 1 bis 5 kannst du üben, da du diese am praktischen Vorspieltag vorspielen musst.

Tonleitertraining 1





Tonleitertraining 2

Two staves of music in G minor, 3/4 time. The first staff contains the first four measures of the scale: G4, A4, Bb4, C5, Bb4, A4, G4. The second staff contains the last four measures: F4, E4, D4, C4, D4, E4, F4, G4.

Tonleitertraining 3

Two staves of music in G major, 3/4 time. The first staff contains the first four measures of the scale: G4, A4, B4, C5, B4, A4, G4. The second staff contains the last four measures: F#4, E4, D4, C4, D4, E4, F#4, G4.

Tonleitertraining 4

Two staves of music in A major, 3/4 time. The first staff contains the first four measures of the scale: A4, B4, C#5, D5, C#5, B4, A4. The second staff contains the last four measures: G#4, F#4, E4, D4, E4, F#4, G#4, A4.

Tonleitertraining 5

Two staves of music in A major, 3/4 time. The first staff contains the first four measures of the scale: A4, B4, C#5, D5, C#5, B4, A4. The second staff contains the last four measures: G#4, F#4, E4, D4, E4, F#4, G#4, A4.