





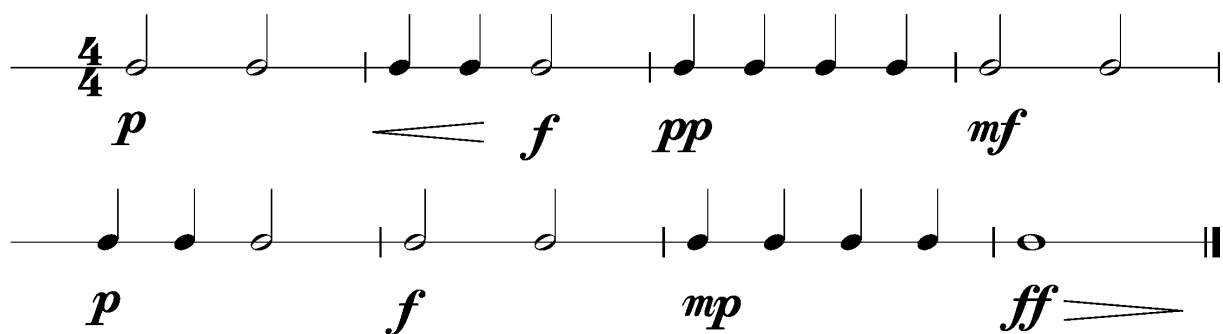
Anforderungen:

- 3 selbstgewählte Spielstücke: 1 schnelles, 1 langsames, 1 selbstgewähltes oder eines im Ensemble mit anderen Prüflingen/KollegenInnen (max. 6Pkt)
- 3 Tonleitertrainings ab Vorlage (max. 6Pkt)
- Rhythmus klatschen mit  inkl. Pausen (max. 2Pkt)
- 1 Lied ab Blatt spielen mit  (max. 2Pkt)
- Dynamikspiel *ff f mf mp p pp cresc. decresc.* (max. 2Pkt)

Dauer des gesamten Vorspiels ca. 10 Minuten

Nimm dieses Blatt zum Diplomvorspiel mit!

Dies ist ein Beispiel eines Dynamikchecks. Am Vorspieltag erhältst du einen ähnlichen Check (spielen, klatschen oder sprechen).

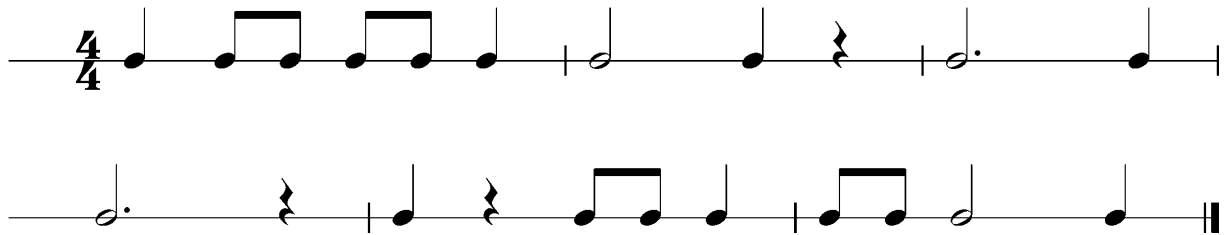


The image shows two staves of musical notation in 4/4 time. The first staff contains four measures: the first measure has a half note with dynamic *p*; the second measure has two quarter notes with dynamic *f* and a wedge-shaped decrescendo symbol; the third measure has four quarter notes with dynamic *pp*; the fourth measure has a half note with dynamic *mf*. The second staff contains four measures: the first measure has a half note with dynamic *p*; the second measure has a half note with dynamic *f*; the third measure has four quarter notes with dynamic *mp*; the fourth measure has a half note with dynamic *ff* and a wedge-shaped crescendo symbol.

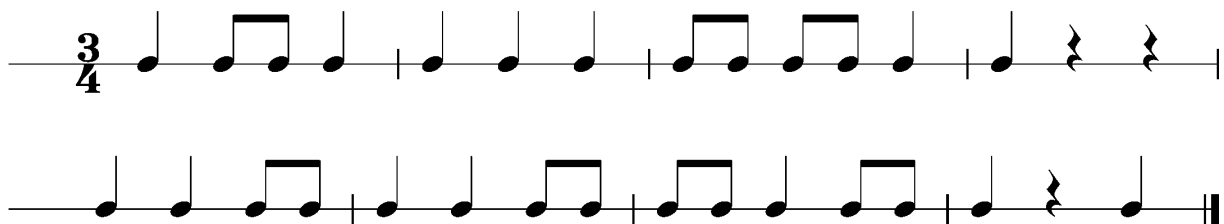


Dies sind zwei Beispiele eines Rhythmuschecks. Am Vorspieltag erhältst du einen ähnlichen Check (spielen, klatschen oder sprechen).

Beispiel 1



Beispiel 2





Die Tonleitertrainings 1 bis 3 kannst du üben, da du diese am Vorspieltag vorspielen musst.

Tonleitertraining 1

Musical notation for Tonleitertraining 1, consisting of four staves. The key signature is two flats (B-flat and E-flat) and the time signature is 4/4. The first staff begins with a 4-measure rest. The melody consists of quarter notes: G2, F2, E2, D2 (first staff); C2, B1, A1, G1 (second staff); F1, E1, D1, C1 (third staff); B0, A0, G0, F0 (fourth staff), ending with a double bar line.

Das Tonleitertraining 2

Musical notation for Das Tonleitertraining 2, consisting of four staves. The key signature is two flats (B-flat and E-flat) and the time signature is 4/4. The melody consists of quarter notes: G2, F2, E2, D2 (first staff); C2, B1, A1, G1 (second staff); F1, E1, D1, C1 (third staff); B0, A0, G0, F0 (fourth staff), ending with a double bar line.



Das Tonleitertraining 3

A musical score for tuba, consisting of four staves of music. The first staff is in 4/4 time with a key signature of one flat (B-flat). The second staff is in 3/4 time with a key signature of one flat. The third and fourth staves are in 4/4 time with a key signature of one flat. The music consists of eighth and quarter notes, with some slurs and a final double bar line at the end of the fourth staff.