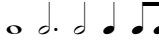





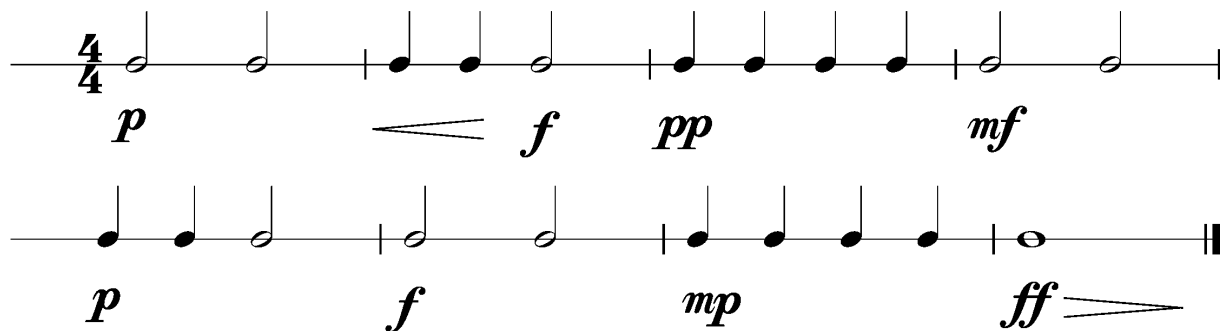
Anforderungen:

- 3 selbstgewählte Spielstücke: 1 schnelles, 1 langsames, 1 selbstgewähltes oder eines im Ensemble mit anderen Prüflingen/KollegenInnen (max. 6Pkt)
- 3 Tonleitertrainings ab Vorlage (max. 6Pkt)
- Rhythmus klatschen mit  inkl. Pausen (max. 2Pkt)
- 1 Lied ab Blatt spielen mit  (max. 2Pkt)
- Dynamikspiel *ff f mf mp p pp cresc. decresc.* (max. 2Pkt)

Dauer des gesamten Vorspiels ca. 10 Minuten

**Nimm dieses Blatt zum Diplomvorspiel mit!**

Dies ist ein Beispiel eines Dynamikchecks. Am Vorspieltag erhältst du einen ähnlichen Check (spielen, klatschen oder sprechen).

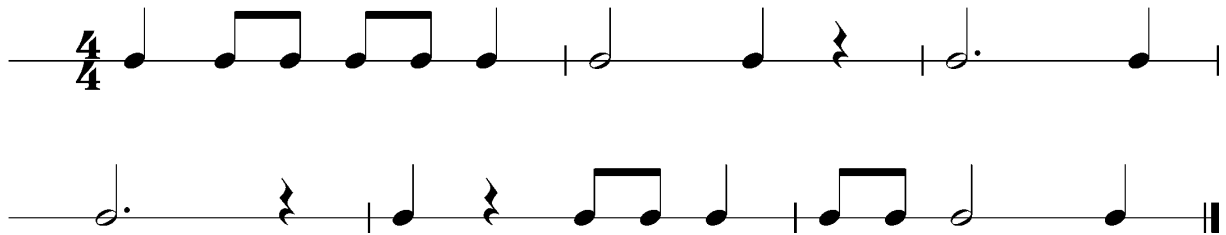


The image shows two staves of musical notation in 4/4 time. The first staff contains four measures of music. The first measure has a dynamic marking of *p*. The second measure has a dynamic marking of *f*. The third measure has a dynamic marking of *pp*. The fourth measure has a dynamic marking of *mf*. A crescendo hairpin is placed between the *f* and *pp* markings. The second staff contains four measures of music. The first measure has a dynamic marking of *p*. The second measure has a dynamic marking of *f*. The third measure has a dynamic marking of *mp*. The fourth measure has a dynamic marking of *ff*. A decrescendo hairpin is placed between the *ff* marking and the final note of the staff.

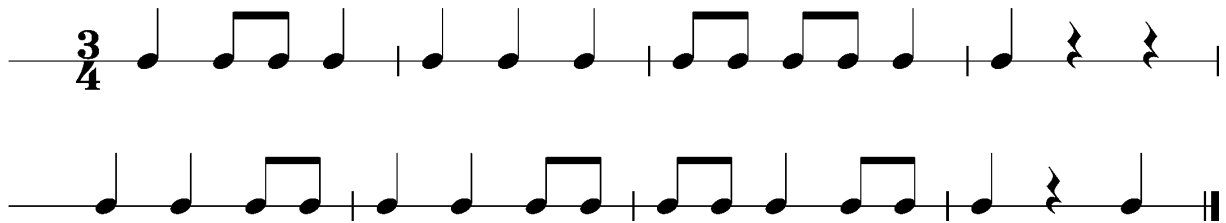


Dies sind zwei Beispiele eines Rhythmuschecks. Am Vorspieltag erhältst du einen ähnlichen Check (spielen, klatschen oder sprechen).

Beispiel 1



Beispiel 2





Die Tonleitertrainings 1 bis 3 kannst du üben, da du diese am Vorspieltag vorspielen musst.

Tonleitertraining 1

Musical notation for Tonleitertraining 1, consisting of four staves in 4/4 time, C major scale. The first staff shows the ascending scale: C4, D4, E4, F4, G4, A4, B4, C5. The second staff shows the descending scale: C5, B4, A4, G4, F4, E4, D4, C4. The third staff shows the ascending scale: C4, D4, E4, F4, G4, A4, B4, C5. The fourth staff shows the descending scale: C5, B4, A4, G4, F4, E4, D4, C4.

Das Tonleitertraining 2

Musical notation for Das Tonleitertraining 2, consisting of four staves in 4/4 time, D major scale. The first staff shows the ascending scale: D4, E4, F#4, G4, A4, B4, C#5, D5. The second staff shows the descending scale: D5, C#5, B4, A4, G4, F#4, E4, D4. The third staff shows the ascending scale: D4, E4, F#4, G4, A4, B4, C#5, D5. The fourth staff shows the descending scale: D5, C#5, B4, A4, G4, F#4, E4, D4.



Das Tonleitertraining 3

