





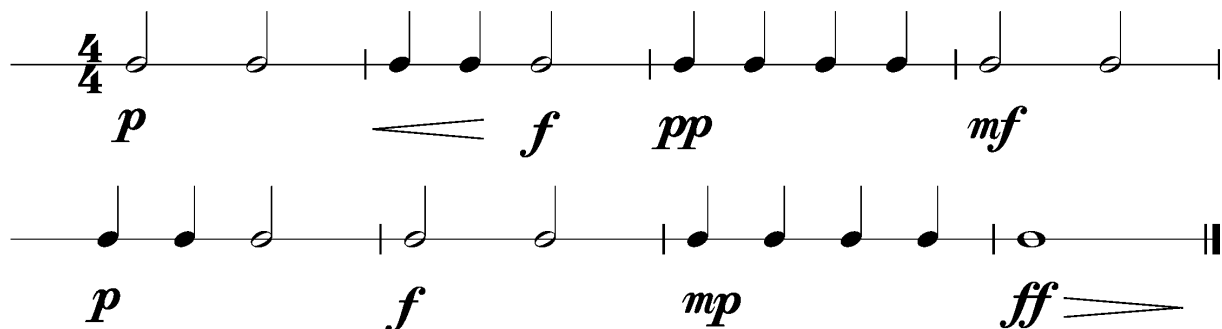
Anforderungen:

- 3 selbstgewählte Spielstücke: 1 schnelles, 1 langsames, 1 selbstgewähltes oder eines im Ensemble mit anderen Prüflingen/KollegenInnen (max. 6Pkt)
- 3 Tonleitertrainings ab Vorlage (max. 6Pkt)
- Rhythmus klatschen mit  inkl. Pausen (max. 2Pkt)
- 1 Lied ab Blatt spielen mit  (max. 2Pkt)
- Dynamikspiel *ff f mf mp p pp cresc. decresc.* (max. 2Pkt)

Dauer des gesamten Vorspiels ca. 10 Minuten

Nimm dieses Blatt zum Test am 5. Mai 2018 mit!

Dies ist ein Beispiel eines Dynamikchecks. Am Vorspieltag erhältst du einen ähnlichen Check (spielen, klatschen oder sprechen).

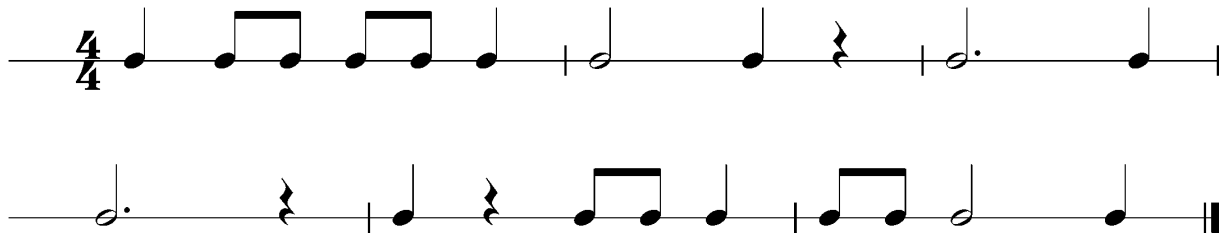


The image shows two staves of musical notation in 4/4 time, illustrating a dynamic check exercise. The first staff contains four measures of music with the following dynamics: *p*, *f*, *pp*, and *mf*. A wedge-shaped symbol (\triangleleft) is placed between the first and second measures, indicating a crescendo. The second staff contains four measures of music with the following dynamics: *p*, *f*, *mp*, and *ff*. A wedge-shaped symbol (\triangleright) is placed between the third and fourth measures, indicating a decrescendo.

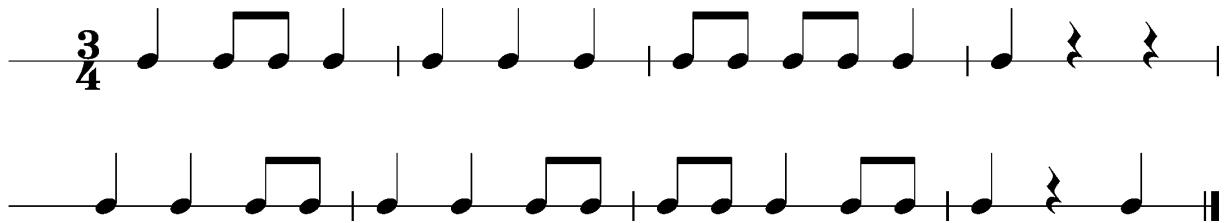


Dies sind zwei Beispiele eines Rhythmuschecks. Am Vorspieltag erhältst du einen ähnlichen Check (spielen, klatschen oder sprechen).

Beispiel 1



Beispiel 2





Die Tonleitertrainings 1 bis 3 kannst du üben, da du diese am Vorspieltag vorspielen musst.

Tonleitertraining 1

The first section contains four staves of musical notation for 'Tonleitertraining 1'. Each staff is in the treble clef and 4/4 time. The exercises are as follows:

- Staff 1: Ascending scale from G4 to D5 (quarter notes), followed by a descending scale from D5 to G4 (quarter notes).
- Staff 2: Ascending scale from G4 to D5 (quarter notes), followed by a descending scale from D5 to G4 (quarter notes).
- Staff 3: Ascending scale from G4 to D5 (quarter notes), followed by a descending scale from D5 to G4 (quarter notes).
- Staff 4: Ascending scale from G4 to D5 (quarter notes), followed by a descending scale from D5 to G4 (quarter notes).

Das Tonleitertraining 2

The second section contains four staves of musical notation for 'Das Tonleitertraining 2'. Each staff is in the treble clef and 4/4 time. The exercises are as follows:

- Staff 1: Ascending scale from G4 to D5 (quarter notes), followed by a descending scale from D5 to G4 (quarter notes).
- Staff 2: Ascending scale from G4 to D5 (quarter notes), followed by a descending scale from D5 to G4 (quarter notes).
- Staff 3: Ascending scale from G4 to D5 (quarter notes), followed by a descending scale from D5 to G4 (quarter notes).
- Staff 4: Ascending scale from G4 to D5 (quarter notes), followed by a descending scale from D5 to G4 (quarter notes).



Das Tonleitertraining 3

The image shows four staves of musical notation for a scale exercise in G major, 4/4 time. Each staff contains a sequence of notes: G4, A4, B4, C5, D5, E5, F5, G5, F5, E5, D5, C5, B4, A4, G4. The notes are grouped into measures with various phrasings and rests.